



*departement*  
**Mobiliteit en  
Openbare Werken**

ANTWERP AIRPORT

2013 STATISTICAL YEARBOOK





## CONTENTS

<b>PREFACE</b> .....	<b>4</b>
<b>EVOLUTION 2003-2013</b> .....	<b>6</b>
<b>PASSENGERS</b> .....	<b>6</b>
<b>MOVEMENTS</b> .....	<b>6</b>
<b>CARGO (IN TONS)</b> .....	<b>6</b>
<b>PER TYPE OF TRAFFIC 2011-2013</b> .....	<b>7</b>
<b>PASSENGERS</b> .....	<b>7</b>
<b>MOVEMENTS</b> .....	<b>7</b>
<b>EVOLUTION PER MONTH 2003-2013</b> .....	<b>FOUT! BLADWIJZER NIET GEDEFINIEERD.</b>
<b>PASSENGERS</b> .....	<b>8</b>
<b>MOVEMENTS</b> .....	<b>9</b>
<b>CARGO (IN TONS)</b> .....	<b>10</b>
<b>MONTHLY PER TYPE OF TRAFFIC 2011-2013</b> .....	<b>11</b>
<b>SCHEDULED FLIGHTS</b> .....	<b>11</b>
<b>CHARTER FLIGHTS</b> .....	<b>12</b>
<b>AD HOC FLIGHTS + 3 TON</b> .....	<b>13</b>
<b>AD HOC FLIGHTS – 3 TON</b> .....	<b>14</b>
<b>LOCAL FLIGHTS</b> .....	<b>15</b>
<b>TRAINING FLIGHTS</b> .....	<b>16</b>
<b>OTHER FLIGHTS</b> .....	<b>17</b>
<b>GLOSSARY</b> .....	<b>18</b>



## Preface

Antwerp Airport is operated as a Separate Management Service by the Flemish government, Department of Mobility and Public Works. This Statistical Yearbook 2013 contains detailed information about passenger numbers, the number of movements and freight at Antwerp Airport.

In 2013, 137.015 passengers made use of Antwerp Airport. This decrease of over 2% compared to the previous year is mainly due to the temporary closure of the route to Manchester and the ongoing economic recession.

This publication is only available electronically and can be ordered from:

Vlaamse Overheid  
Departement Mobiliteit en Openbare Werken  
**Luchthaven Antwerpen**  
Luchthavenlei z/n  
2100 Antwerpen

Tel: 03-285 65 11  
Fax: 03-285 65 01

Statistical data may be reproduced provided the source is fully acknowledged.

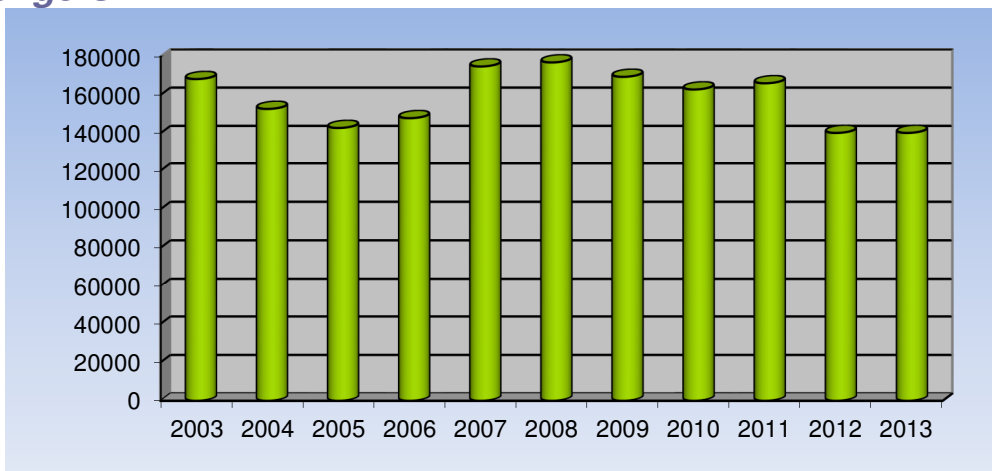
March 2014  
Nederlandstalige versie beschikbaar



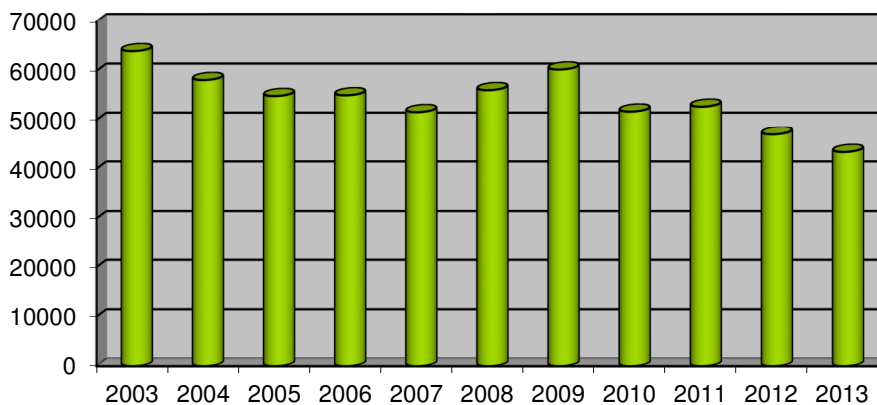
## Evolution 2003-2013

	2003	2004	2005	2006	2007	2008	2009	2010	2011	2012	2013
<b>Passengers</b>	168,283	152,682	142,737	147,849	174,858	176,971	169,446	162,840	166,078	140,139	137,015
<b>Movements</b>	64,000	58,132	54,871	55,023	51,589	56,072	60,266	51,703	52,701	46,962	43,390
<b>Cargo (in tons)</b>	4,903	4,281	4,664	6,825	5,312	5,562	4,592	4,213	4,232	4,286	3,570

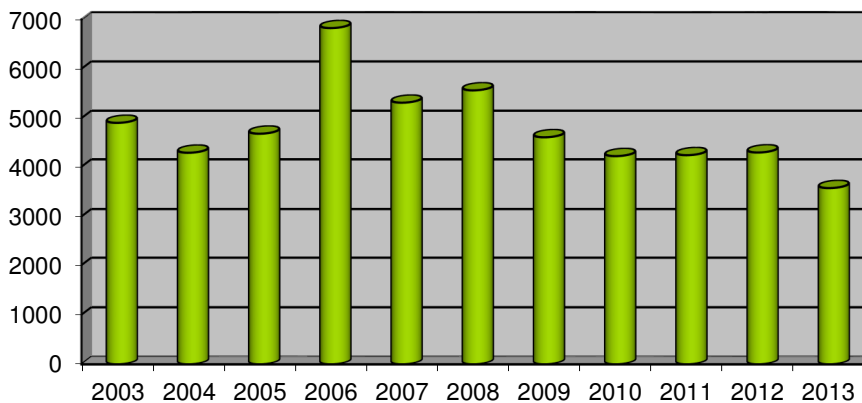
### Passengers



### Movements



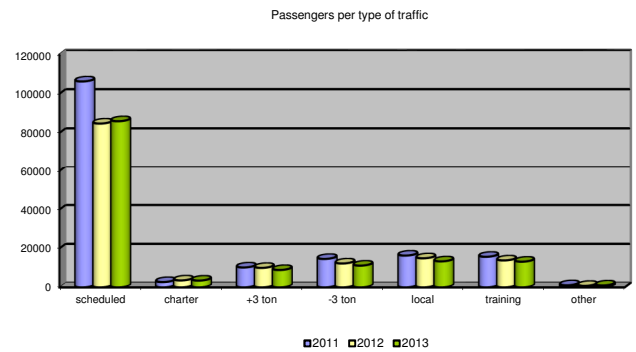
### Cargo (in tons)



## Per type of traffic 2011-2013

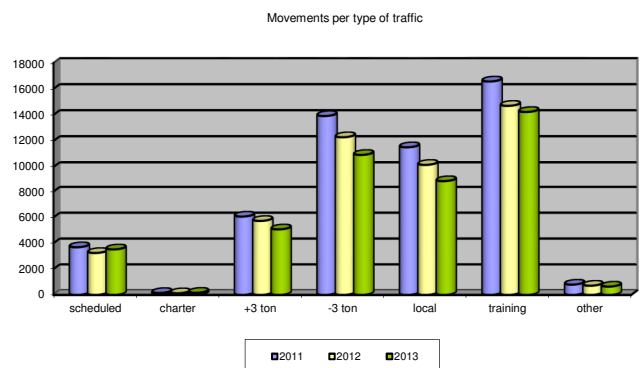
### Passengers

	2011	2012	2013
Scheduled flights	106,321	84,808	86002
Charter flights	2,705	3,533	3452
Ad hoc +3 ton	10,205	9,989	8902
Ad hoc -3 ton	14,608	12,267	11163
Local flights	16,336	14,934	13354
Training flights	15,717	13,840	13196
Other flights	1,041	768	946
<b>Total</b>	<b>166,933</b>	<b>140,139</b>	<b>137,015</b>



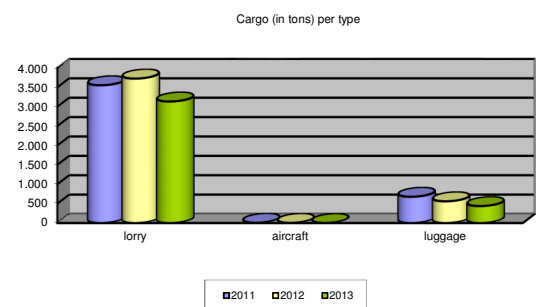
### Movements

	2011	2012	2013
Scheduled flights	3,691	3,246	3523
Charter flights	148	127	164
Ad hoc +3 ton	6,065	5,729	5075
Ad hoc -3 ton	13,919	12,287	10929
Local flights	11,516	10,163	8809
Training flights	16,572	14,699	14228
Other flights	795	711	643
<b>Total</b>	<b>52,706</b>	<b>46,962</b>	<b>43,371</b>



### Cargo (in tons)

	2011	2012	2013
Lorry <sup>1</sup>	3,552	3,724	3133
Aircraft	6	3	1
Luggage	676	559	436
<b>Total</b>	<b>4,234</b>	<b>4,286</b>	<b>3570</b>



<sup>1</sup> Road freight by air waybill.

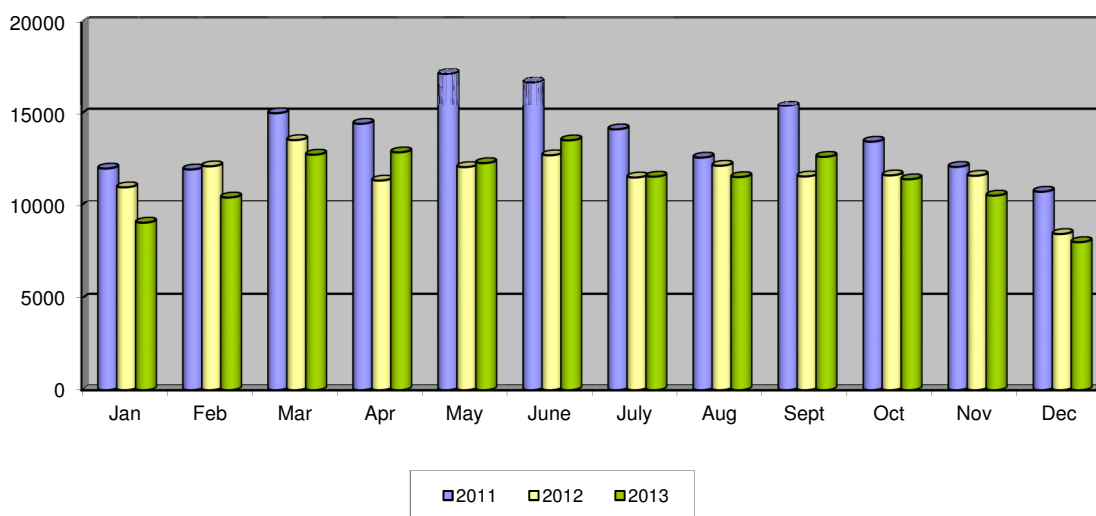


## Evolution per month 2002-2012

### Passengers

	2003	2004	2005	2006	2007	2008	2009	2010	2011	2012	2013
January	13,190	10,045	10,057	10,066	11,572	11,651	10,833	10,854	12,038	11,026	9.058
February	13,196	11,549	10,900	10,269	12,380	13,735	11,350	13,137	11,989	12,158	10.474
March	15,826	13,767	11,771	14,279	16,692	13,360	13,648	16,123	15,019	13,572	12.785
April	14,733	12,434	11,992	13,870	16,052	17,818	14,890	11,452	14,451	11,390	12.910
May	16,307	13,116	11,933	13,695	16,459	20,613	16,325	16,105	17,215	12,117	12.330
June	15,703	14,211	14,504	14,420	14,761	16,231	18,045	17,328	16,752	12,753	13.558
July	14,589	12,266	11,727	11,424	13,654	13,862	15,616	15,061	14,151	11,555	11.601
August	12,043	12,602	11,477	9,704	13,480	12,004	11,926	11,702	12,626	12,188	11.576
September	15,057	15,714	13,578	12,464	18,068	17,734	16,855	14,313	15,440	11,611	12.667
October	14,053	13,742	11,555	14,301	16,560	15,034	15,083	15,010	13,485	11,668	11.459
November	12,698	12,745	11,846	13,464	14,530	12,609	12,520	12,079	12,125	11,648	10.578
December	10,888	10,491	11,397	9,893	10,650	12,320	12,355	9,676	10,787	8,453	8.019
<b>Total</b>	<b>168,283</b>	<b>152,682</b>	<b>142,737</b>	<b>147,849</b>	<b>174,858</b>	<b>176,971</b>	<b>169,446</b>	<b>162,840</b>	<b>166,078</b>	<b>140,139</b>	<b>137.015</b>

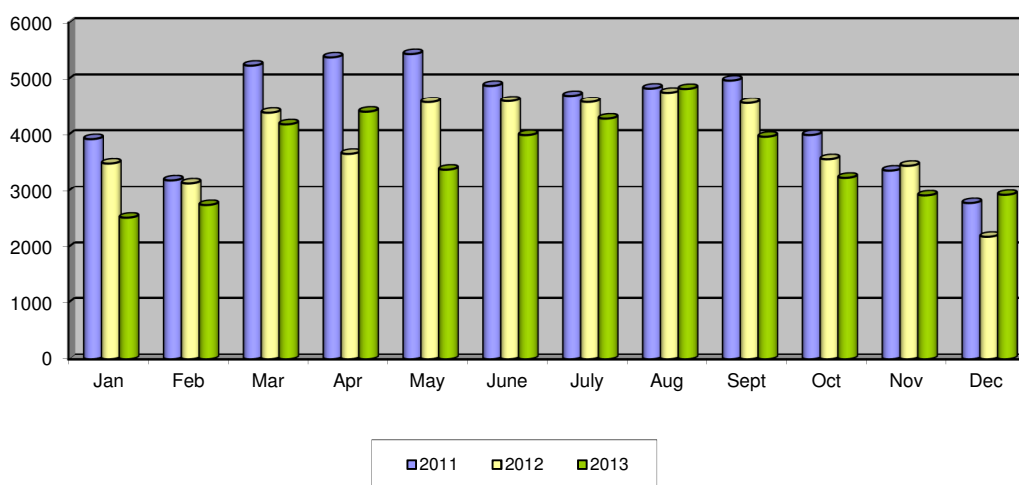
Passengers per month



## Movements

	2003	2004	2005	2006	2007	2008	2009	2010	2011	2012	2013
January	3,871	3,758	3,972	3,752	3,006	3,336	3,703	2,882	3,923	3,494	2,520
February	5,107	3,816	3,494	3,262	3,482	4,430	3,827	3,064	3,198	3,145	2,745
March	6,232	5,640	4,570	5,532	4,646	3,337	5,194	5,102	5,237	4,387	4,183
April	4,888	5,384	4,634	6,078	5,190	5,302	5,714	4,644	5,384	3,664	4,405
May	6,534	5,796	4,714	5,364	4,880	6,147	6,347	5,296	5,443	4,577	3,386
June	5,996	5,330	5,200	5,922	4,657	5,314	6,416	5,607	4,876	4,596	3,994
July	6,107	5,306	5,029	5,158	4,418	4,981	6,492	5,925	4,696	4,579	4,284
August	5,782	5,978	6,218	3,980	5,419	4,885	5,831	4,949	4,828	4,753	4,822
September	5,715	5,462	5,178	5,038	4,870	5,530	5,104	4,638	4,971	4,562	3,965
October	5,030	5,064	4,530	4,586	4,281	4,833	5,304	4,575	3,995	3,570	3,243
November	4,648	3,668	3,622	3,748	3,805	3,683	2,914	2,745	3,370	3,454	2,916
December	4,090	2,930	3,710	2,603	2,935	4,294	3,420	2,276	2,780	2,181	2,927
<b>Total</b>	<b>64,000</b>	<b>58,132</b>	<b>54,871</b>	<b>55,023</b>	<b>51,589</b>	<b>56,072</b>	<b>60,266</b>	<b>51,703</b>	<b>52,701</b>	<b>46,962</b>	<b>43,390</b>

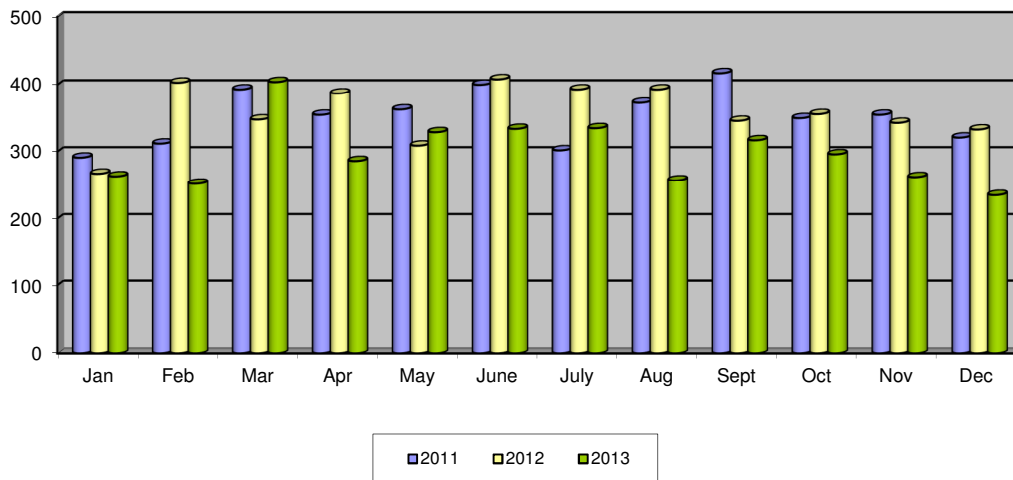
Movements per month



## Cargo (in tons)

	2003	2004	2005	2006	2007	2008	2009	2010	2011	2012	2013
January	471	263	372	448	433	445	309	387	291	267	263
February	413	334	409	593	427	488	441	356	312	403	252
March	307	334	471	535	470	495	322	368	393	348	404
April	308	416	382	449	418	472	382	335	355	387	286
May	389	309	417	742	485	415	336	327	363	309	329
June	377	334	405	631	464	466	363	366	400	408	334
July	521	350	410	513	439	435	419	301	302	393	335
August	420	337	357	526	452	413	369	313	373	393	257
September	413	277	360	677	423	592	457	365	417	346	317
October	384	439	329	631	537	482	384	424	350	356	296
November	466	433	359	547	384	483	478	385	355	343	262
December	434	455	393	533	380	376	332	286	321	333	235
<b>Total</b>	<b>4,903</b>	<b>4,281</b>	<b>4,664</b>	<b>6,825</b>	<b>5,312</b>	<b>5,562</b>	<b>4,592</b>	<b>4,213</b>	<b>4,232</b>	<b>4,286</b>	<b>3570</b>

Cargo (in tons) per month

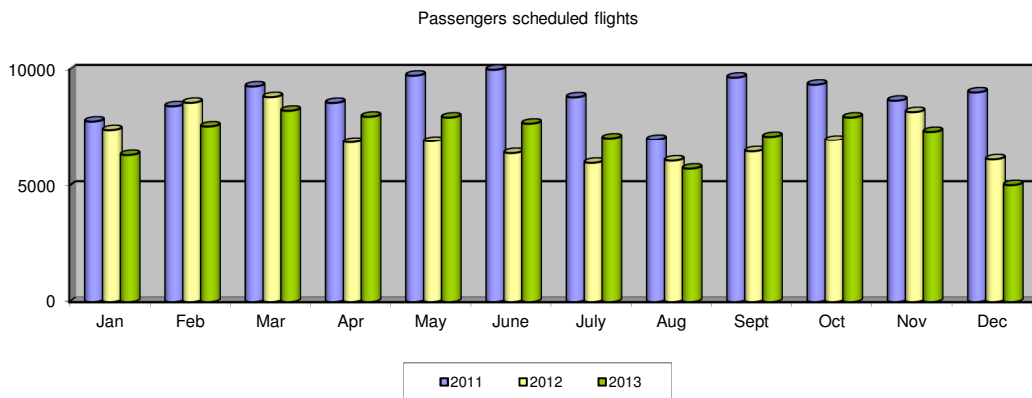


# Monthly per type of traffic 2011-2013

## Scheduled flights

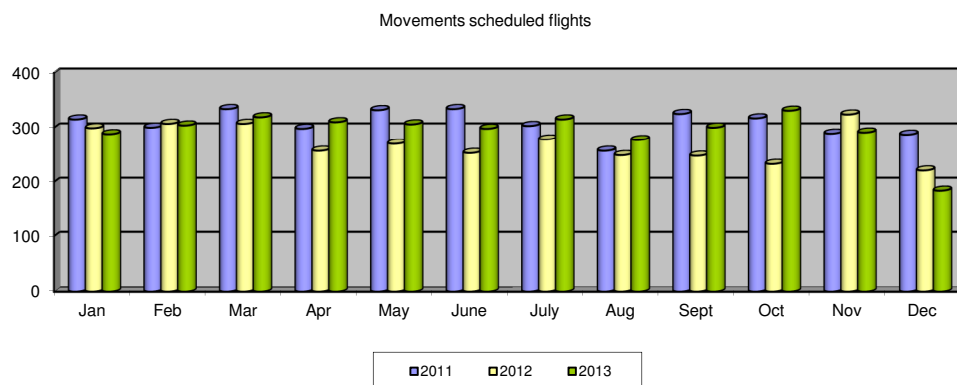
### Passengers

	Jan	Feb	Mar	Apr	May	June	July	Aug	Sept	Oct	Nov	Dec	Total
2011	7,785	8,435	9,279	8,578	9,736	9,989	8,815	7,001	9,652	9,353	8,673	9,025	<b>106,321</b>
2012	7,420	8,583	8,824	6,870	6,914	6,395	5,978	6,076	6,472	6,962	8,187	6,127	<b>84,808</b>
2013	6,309	7,575	8,244	7,989	7,954	7,693	7,059	5,731	7,127	7,953	7,341	5,027	<b>86,002</b>



### Movements

	Jan	Feb	Mar	Apr	May	June	July	Aug	Sept	Oct	Nov	Dec	Total
2011	315	300	334	298	332	334	303	257	325	317	289	287	<b>3,691</b>
2012	299	307	307	257	270	253	278	249	248	233	324	221	<b>3,246</b>
2013	288	304	319	310	306	298	315	277	300	331	291	184	<b>3,523</b>

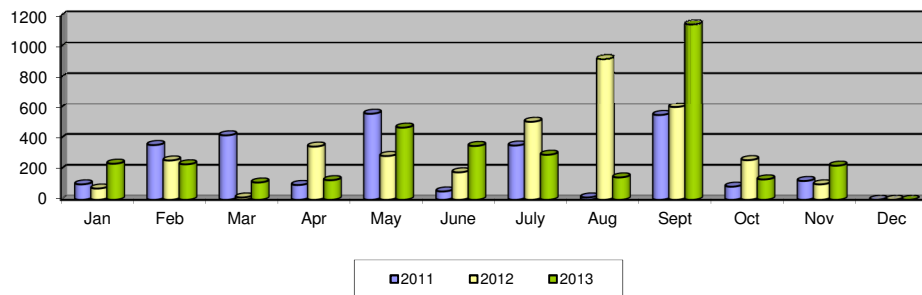


## Charter flights

### Passengers

	Jan	Feb	Mar	Apr	May	June	July	Aug	Sept	Oct	Nov	Dec	Total
2011	100	355	418	96	558	54	352	15	550	85	122	0	2,705
2012	73	255	15	345	284	178	506	918	602	257	100	0	3,533
2013	234	230	112	127	468	349	292	145	1142	132	221	0	3,452

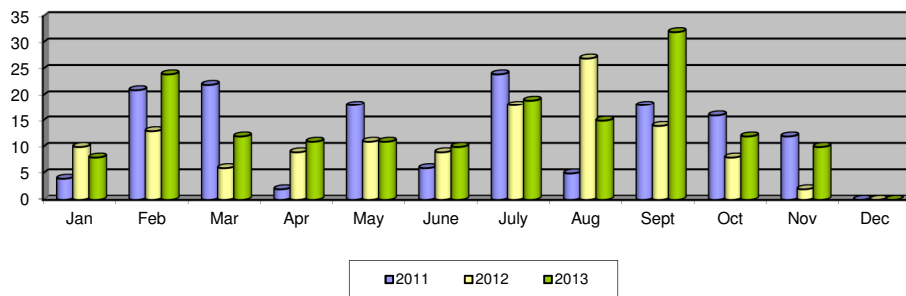
Passengers charter flights



### Movements

	Jan	Feb	Mar	Apr	May	June	July	Aug	Sept	Oct	Nov	Dec	Total
2011	4	21	22	2	18	6	24	5	18	16	12	0	148
2012	10	13	6	9	11	9	18	27	14	8	2	0	127
2013	8	24	12	11	11	10	19	15	32	12	10	0	164

Movements charter flights

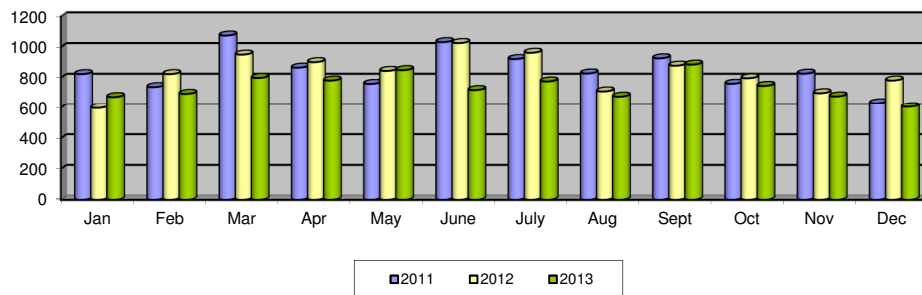


## Ad hoc flights + 3 ton

### Passengers

	Jan	Feb	Mar	Apr	May	June	July	Aug	Sept	Oct	Nov	Dec	Total
2011	825	740	1,076	867	761	1,033	923	829	928	762	828	633	10,205
2012	599	825	952	903	846	1,027	964	712	880	798	700	783	9,989
2013	675	696	800	783	851	721	777	678	887	748	679	607	8,902

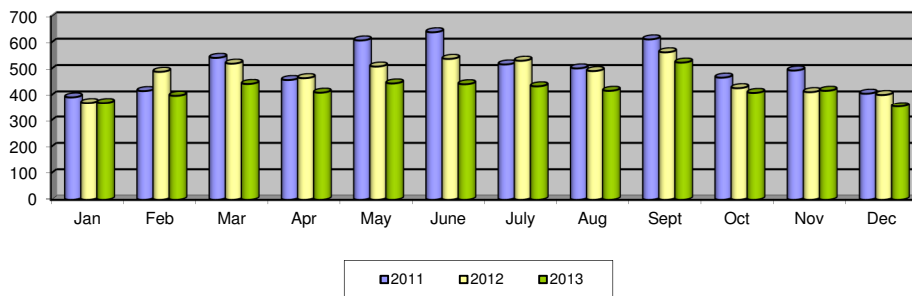
Passengers ad hoc flights +3 ton



### Movements

	Jan	Feb	Mar	Apr	May	June	July	Aug	Sept	Oct	Nov	Dec	Total
2011	393	417	543	459	609	640	518	503	613	468	495	407	6,065
2012	371	490	521	466	510	539	532	493	564	428	413	402	5,729
2013	371	399	444	411	446	443	435	418	525	410	418	355	5,075

Movements ad hoc flights +3 ton

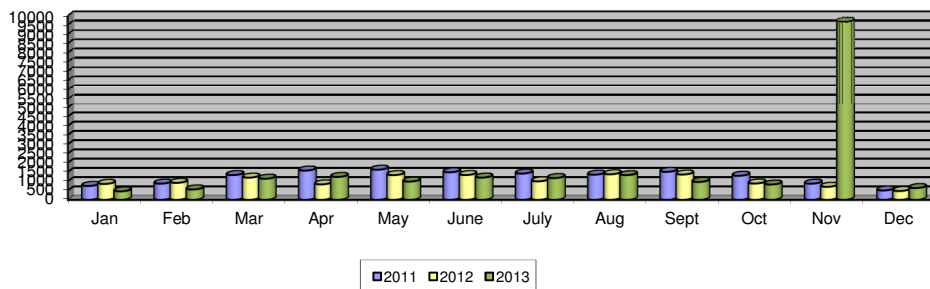


## Ad hoc flights – 3 ton

### Passengers

	Jan	Feb	Mar	Apr	May	June	July	Aug	Sept	Oct	Nov	Dec	Total
2011	747	873	1,337	1,579	1,627	1,488	1,418	1,357	1,510	1,298	871	503	<b>14,608</b>
2012	856	916	1,197	832	1,333	1,337	997	1,380	1,366	879	701	473	<b>12,267</b>
2013	455	559	1,138	1,235	985	1,199	1,173	1,332	965	825	663	634	<b>11,163</b>

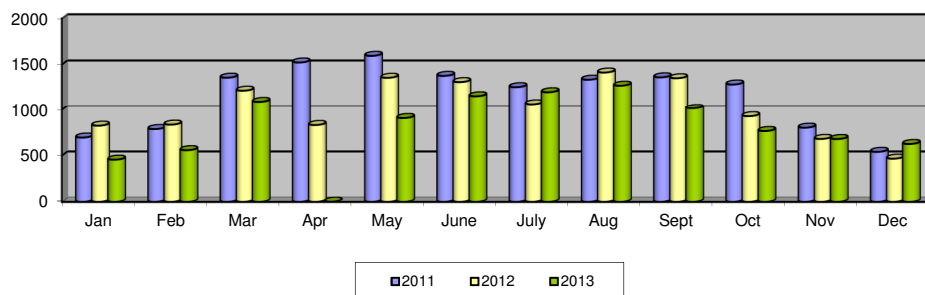
Passengers ad hoc flights -3 ton



### Movements

	Jan	Feb	Mar	Apr	May	June	July	Aug	Sept	Oct	Nov	Dec	Total
2011	696	788	1,358	1,523	1,595	1,378	1,255	1,336	1,362	1,284	803	541	<b>13,919</b>
2012	825	836	1,217	832	1,357	1,310	1,068	1,414	1,352	928	681	467	<b>12,287</b>
2013	456	559	1,095	1,195	908	1,156	1,200	1,271	1,016	767	680	626	<b>10,929</b>

Movements ad hoc flights -3 ton

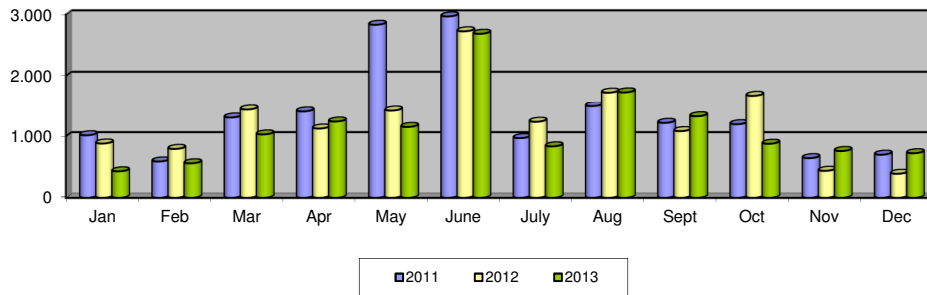


## Local flights

### Passengers

	Jan	Feb	Mar	Apr	May	June	July	Aug	Sept	Oct	Nov	Dec	Total
2011	1,016	590	1,306	1,404	2,832	2,968	970	1,492	1,218	1,196	644	700	16,336
2012	882	794	1,436	1,126	1,418	2,726	1,236	1,728	1,084	1,676	438	390	14,934
2013	430	560	1,030	1,240	1,152	2,686	836	1,732	1,326	878	760	724	13,354

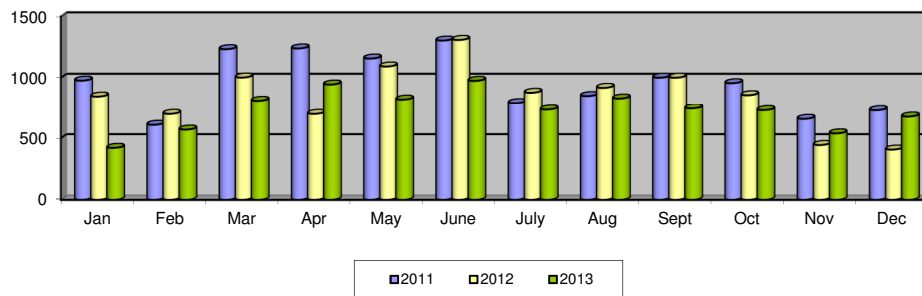
Passengers local flights



### Movements

	Jan	Feb	Mar	Apr	May	June	July	Aug	Sept	Oct	Nov	Dec	Total
2011	978	610	1,234	1,240	1,158	1,304	794	852	1,002	957	658	729	11,516
2012	848	699	1,003	699	1,093	1,309	879	919	1,002	859	445	408	10,163
2013	422	571	813	946	823	976	735	832	744	730	540	677	8,809

Movements local flights



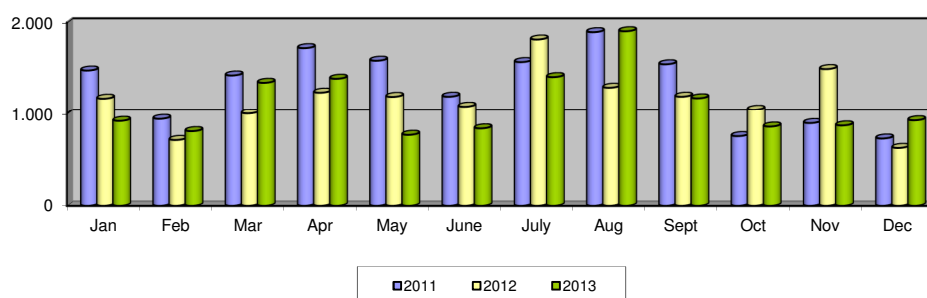


## Training flights

### Passengers

	Jan	Feb	Mar	Apr	May	June	July	Aug	Sept	Oct	Nov	Dec	Total
2011	1,476	942	1,422	1,720	1,583	1,190	1,568	1,894	1,544	754	896	728	15,717
2012	1,168	712	1,002	1,234	1,188	1,080	1,814	1,288	1,190	1,046	1,492	626	13,840
2013	920	808	1,342	1,386	768	838	1,404	1,904	1,172	858	870	926	13,196

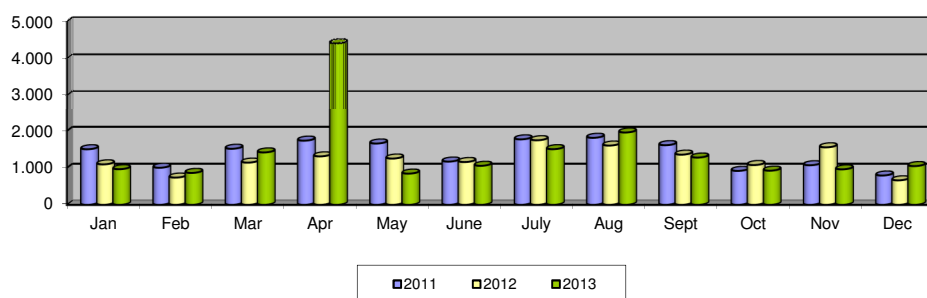
Passengers training flights



### Movements

	Jan	Feb	Mar	Apr	May	June	July	Aug	Sept	Oct	Nov	Dec	Total
2011	1,504	1,003	1,517	1,737	1,659	1,170	1,772	1,814	1,614	918	1,071	793	16,572
2012	1,095	737	1,142	1,311	1,252	1,158	1,748	1,604	1,358	1,076	1,556	662	14,699
2013	964	863	1,418	4,408	844	1,056	1,506	1,958	1,279	924	960	1,048	14,228

Movements training flights



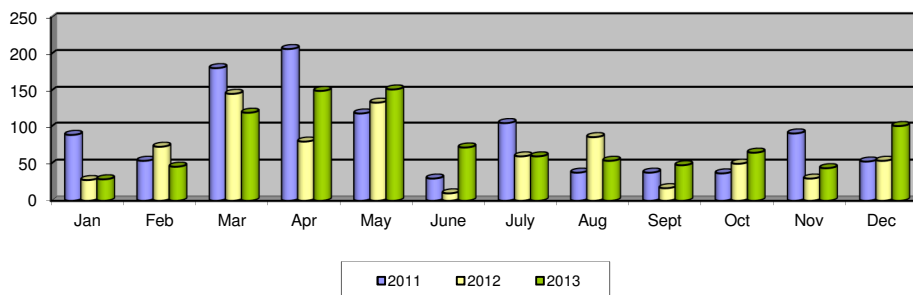
## Other flights

(= cargo flights, military flights, photo flights, diversions)

### Passengers

	Jan	Feb	Mar	Apr	May	June	July	Aug	Sept	Oct	Nov	Dec	Total
2011	89	54	181	207	118	30	105	38	38	37	91	53	1,041
2012	28	73	146	80	134	10	60	86	17	50	30	54	768
2013	29	46	119	150	152	72	60	54	48	65	44	101	940

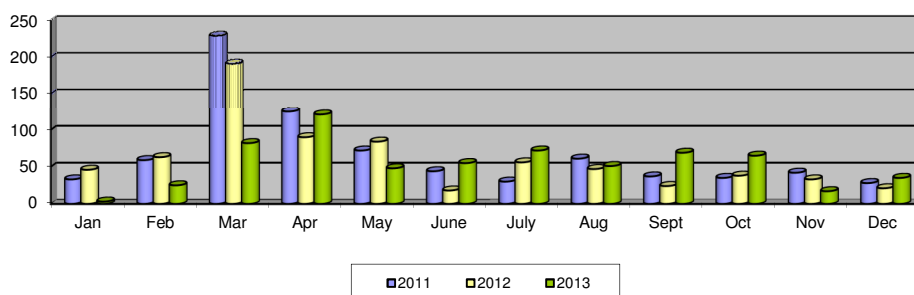
Passengers other flights



### Movements

	Jan	Feb	Mar	Apr	May	June	July	Aug	Sept	Oct	Nov	Dec	Total
2011	33	59	229	125	72	44	30	61	37	35	42	28	795
2012	46	63	191	90	84	18	56	47	24	38	33	21	711
2013	3	25	82	121	48	55	72	51	69	65	17	35	643

Movements other flights



# Glossary

## 1. SCHEDULED FLIGHTS

Regular commercial flights.

## 2. CHARTER FLIGHTS

Flights and accommodation, or flights only, reserved to the members of an association travelling group.

## 3. AD HOC FLIGHTS (–3 TON AND +3 TON)

Transfer by aircraft for business purposes, or a flight performed by an aircraft with a maximum seat capacity of 7 passengers, for which the planned destination includes one or more landings outside the airport of departure.

## 4. LOCAL FLIGHTS

- 4.1. Transfer by aircraft for which the airport of departure is the planned destination, so that the flight includes no landings outside the airport of departure.
- 4.2. Maiden flights.

## 5. TRAINING FLIGHTS

- 5.1. Flight performed by a student-pilot to become a license.
- 5.2. Flight performed
  - for purpose of the issue, renewal or restitution of a certificate of airworthiness;
  - to control ground installations.
- 5.3. Flight performed by an aircraft for crew training.

## 6. OTHER FLIGHTS

- 6.1. Diversions.

- 6.2. Delivery flight: flight to deliver an aircraft.
- 6.3. Empty flight to bring an aircraft in position.
- 6.4. Military flights.
- 6.5. Flights for exclusive transport of heads of state or members of government in the exercise of their duty.

Vlaamse overheid



**Composition**

Department Mobility and Public Works  
Antwerp Airport  
Katleen Pittevils

**Responsible publisher**

Ir. Fernand Desmyter  
Secretaris-generaal

**Catalogue number**

D/2013/3241/039

**Edition** March 2014

