



departement
**Mobiliteit en
Openbare Werken**

ANTWERP AIRPORT

2012 STATISTICAL YEARBOOK



CONTENTS

PREFACE	4
EVOLUTION 2002-2012	6
PASSENGERS	6
MOVEMENTS	6
CARGO (IN TONS)	6
PER TYPE OF TRAFFIC 2010-2012	7
PASSENGERS	7
MOVEMENTS	7
EVOLUTION PER MONTH 2001-2011	FOUT! BLADWIJZER NIET GEDEFINIEERD.
PASSENGERS	8
MOVEMENTS	9
CARGO (IN TONS)	10
MONTHLY PER TYPE OF TRAFFIC 2010-2012	11
SCHEDULED FLIGHTS	11
CHARTER FLIGHTS	12
AD HOC FLIGHTS + 3 TON	13
AD HOC FLIGHTS – 3 TON	14
LOCAL FLIGHTS	15
TRAINING FLIGHTS	16
OTHER FLIGHTS	17
GLOSSARY	18

Preface

Antwerp Airport is operated as a Separate Management Service by the Flemish government, Department of Mobility and Public Works. This Statistical Yearbook 2012 contains detailed information about passenger numbers, the number of movements and freight at Antwerp Airport.

In 2012, 140,139 passengers made use of Antwerp Airport. This decrease of over 15% compared to the previous year is mainly due to the temporary closure of the route to Manchester and the ongoing economic recession. Positive is that the new airline bmi regional could be attracted to restart the route.

The scheduled flights to London City, local flights and training flights decreased by an average of 10% each, while the decline in passenger numbers on business flights was limited to less than 3%. The number of passengers on charter flights increased by 30% in 2012 due to the increasing activity of air broker The Aviation Factory for transporting groups of business travelers.

The scheduled flights account for about 60% of passenger numbers, local flights, training flights and business flights each for about 10% and charter flights for nearly 3%.

This publication is only available electronically and can be ordered from:

Vlaamse Overheid
Departement Mobiliteit en Openbare Werken
Luchthaven Antwerpen
Luchthavenlei z/n
2100 Antwerpen

Tel: 03-285 65 11
Fax: 03-285 65 01

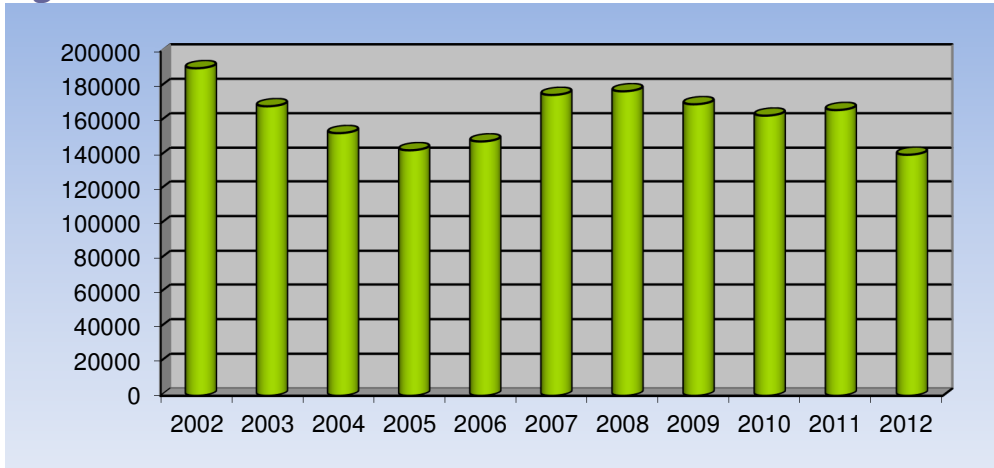
Statistical data may be reproduced provided the source is fully acknowledged.

March 2013
Nederlandstalige versie beschikbaar

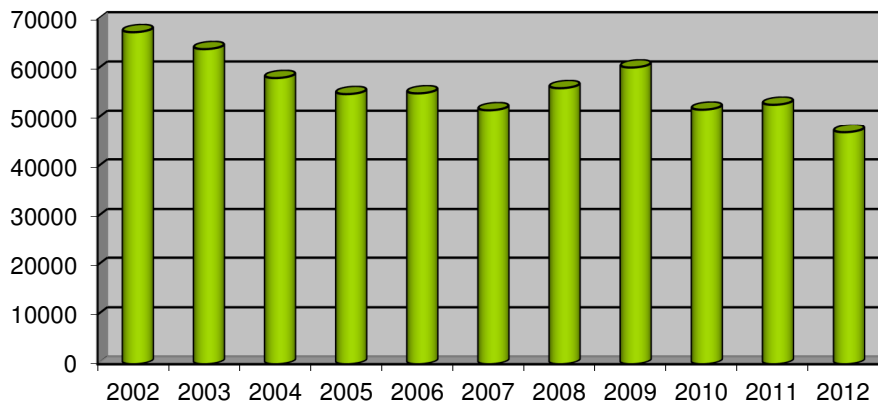
Evolution 2002-2012

	2002	2003	2004	2005	2006	2007	2008	2009	2010	2011	2012
Passengers	190,362	168,283	152,682	142,737	147,849	174,858	176,971	169,446	162,840	166,078	140,139
Movements	67,435	64,000	58,132	54,871	55,023	51,589	56,072	60,266	51,703	52,701	46,962
Cargo (in tons)	5,240	4,903	4,281	4,664	6,825	5,312	5,562	4,592	4,213	4,232	4,286

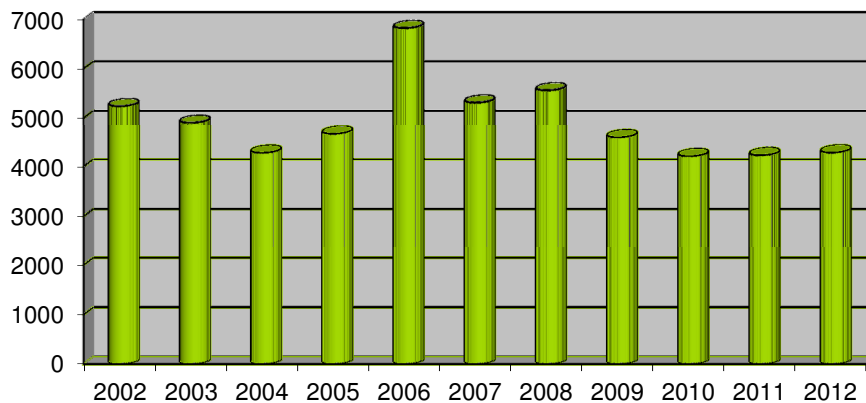
Passengers



Movements



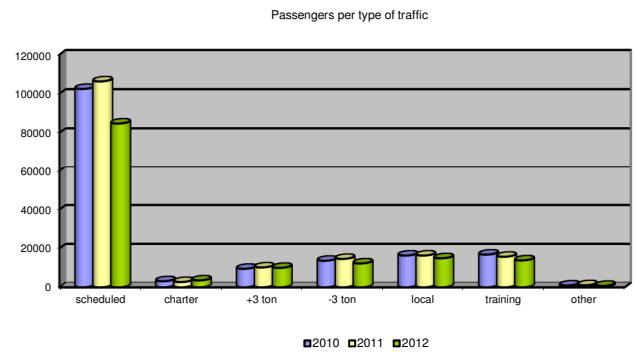
Cargo (in tons)



Per type of traffic 2010-2012

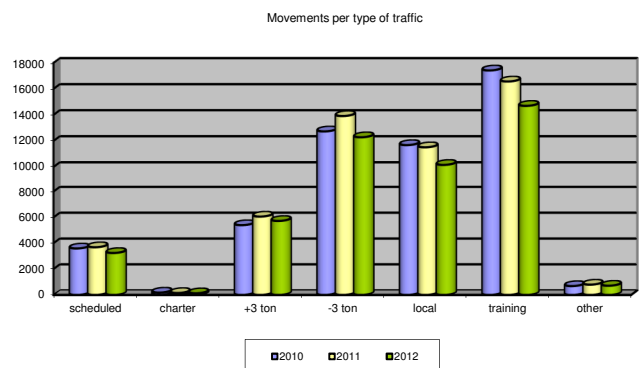
Passengers

	2010	2011	2012
Scheduled flights	102,472	106,321	84,808
Charter flights	3,118	2,705	3,533
Ad hoc +3 ton	9,509	10,205	9,989
Ad hoc -3 ton	13,656	14,608	12,267
Local flights	16,334	16,336	14,934
Training flights	16,824	15,717	13,840
Other flights	927	1,041	768
Total	162,840	166,933	140,139



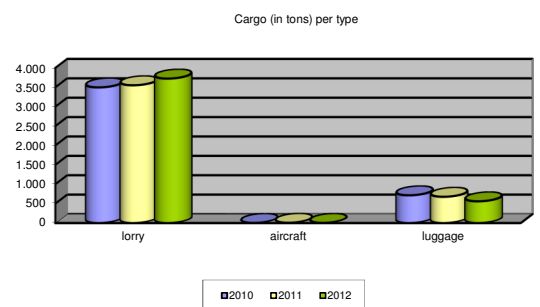
Movements

	2010	2011	2012
Scheduled flights	3,597	3,691	3,246
Charter flights	178	148	127
Ad hoc +3 ton	5,402	6,065	5,729
Ad hoc -3 ton	12,737	13,919	12,287
Local flights	11,685	11,516	10,163
Training flights	17,420	16,572	14,699
Other flights	684	795	711
Total	51,703	52,706	46,962



Cargo (in tons)

	2010	2011	2012
Lorry ¹	3,497	3,552	3,724
Aircraft	2	6	3
Luggage	714	676	559
Total	4,213	4,234	4,286



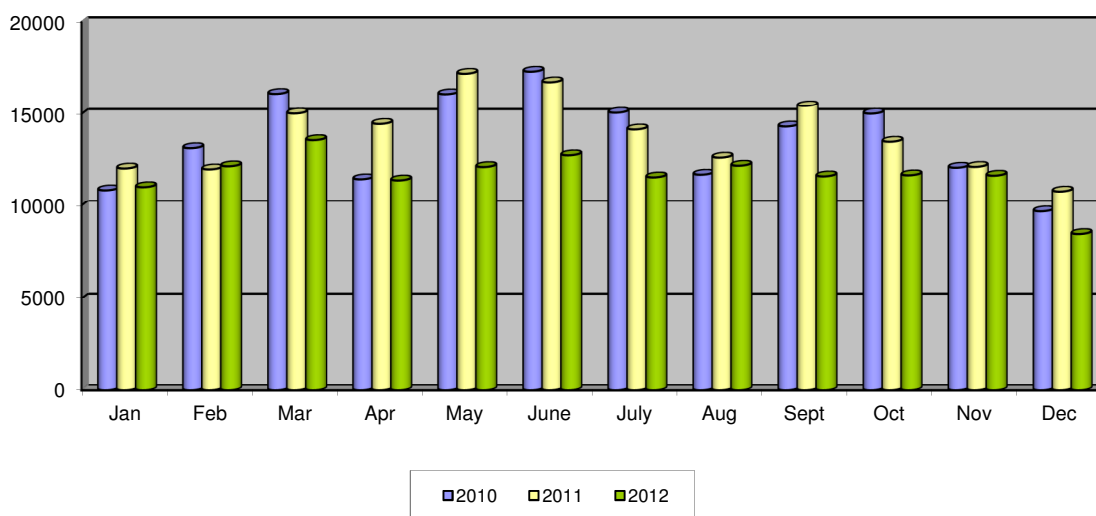
¹ Road freight by air waybill.

Evolution per month 2002-2012

Passengers

	2002	2003	2004	2005	2006	2007	2008	2009	2010	2011	2012
January	15,169	13,190	10,045	10,057	10,066	11,572	11,651	10,833	10,854	12,038	11,026
February	15,846	13,196	11,549	10,900	10,269	12,380	13,735	11,350	13,137	11,989	12,158
March	20,927	15,826	13,767	11,771	14,279	16,692	13,360	13,648	16,123	15,019	13,572
April	18,273	14,733	12,434	11,992	13,870	16,052	17,818	14,890	11,452	14,451	11,390
May	22,538	16,307	13,116	11,933	13,695	16,459	20,613	16,325	16,105	17,215	12,117
June	15,596	15,703	14,211	14,504	14,420	14,761	16,231	18,045	17,328	16,752	12,753
July	14,034	14,589	12,266	11,727	11,424	13,654	13,862	15,616	15,061	14,151	11,555
August	11,366	12,043	12,602	11,477	9,704	13,480	12,004	11,926	11,702	12,626	12,188
September	14,861	15,057	15,714	13,578	12,464	18,068	17,734	16,855	14,313	15,440	11,611
October	15,149	14,053	13,742	11,555	14,301	16,560	15,034	15,083	15,010	13,485	11,668
November	13,577	12,698	12,745	11,846	13,464	14,530	12,609	12,520	12,079	12,125	11,648
December	13,026	10,888	10,491	11,397	9,893	10,650	12,320	12,355	9,676	10,787	8,453
Total	190,362	168,283	152,682	142,737	147,849	174,858	176,971	169,446	162,840	166,078	140,139

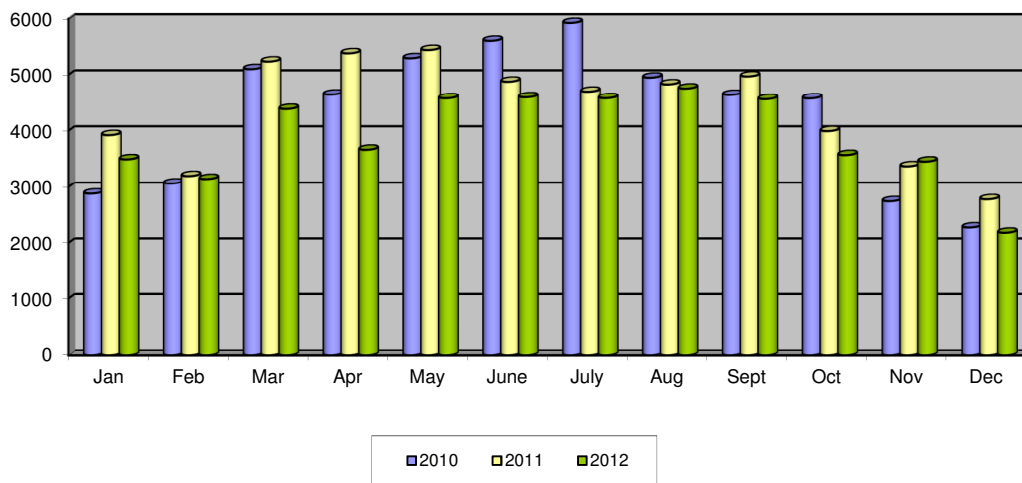
Passengers per month



Movements

	2002	2003	2004	2005	2006	2007	2008	2009	2010	2011	2012
January	4,249	3,871	3,758	3,972	3,752	3,006	3,336	3,703	2,882	3,923	3,494
February	4,098	5,107	3,816	3,494	3,262	3,482	4,430	3,827	3,064	3,198	3,145
March	6,899	6,232	5,640	4,570	5,532	4,646	3,337	5,194	5,102	5,237	4,387
April	6,906	4,888	5,384	4,634	6,078	5,190	5,302	5,714	4,644	5,384	3,664
May	7,196	6,534	5,796	4,714	5,364	4,880	6,147	6,347	5,296	5,443	4,577
June	6,052	5,996	5,330	5,200	5,922	4,657	5,314	6,416	5,607	4,876	4,596
July	6,083	6,107	5,306	5,029	5,158	4,418	4,981	6,492	5,925	4,696	4,579
August	5,500	5,782	5,978	6,218	3,980	5,419	4,885	5,831	4,949	4,828	4,753
September	6,176	5,715	5,462	5,178	5,038	4,870	5,530	5,104	4,638	4,971	4,562
October	5,086	5,030	5,064	4,530	4,586	4,281	4,833	5,304	4,575	3,995	3,570
November	4,994	4,648	3,668	3,622	3,748	3,805	3,683	2,914	2,745	3,370	3,454
December	4,196	4,090	2,930	3,710	2,603	2,935	4,294	3,420	2,276	2,780	2,181
Total	67,435	64,000	58,132	54,871	55,023	51,589	56,072	60,266	51,703	52,701	46,962

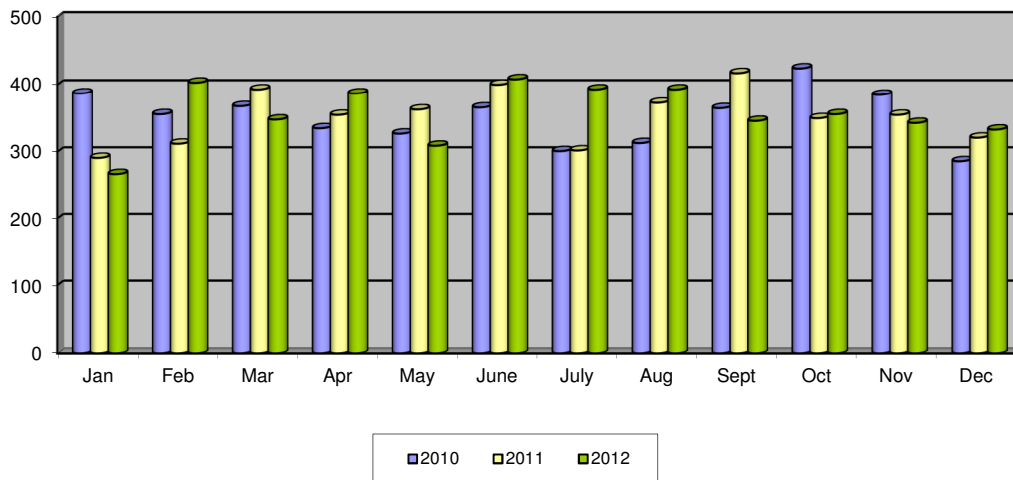
Movements per month



Cargo (in tons)

	2002	2003	2004	2005	2006	2007	2008	2009	2010	2011	2012
January	517	471	263	372	448	433	445	309	387	291	267
February	540	413	334	409	593	427	488	441	356	312	403
March	454	307	334	471	535	470	495	322	368	393	348
April	292	308	416	382	449	418	472	382	335	355	387
May	445	389	309	417	742	485	415	336	327	363	309
June	483	377	334	405	631	464	466	363	366	400	408
July	545	521	350	410	513	439	435	419	301	302	393
August	355	420	337	357	526	452	413	369	313	373	393
September	370	413	277	360	677	423	592	457	365	417	346
October	372	384	439	329	631	537	482	384	424	350	356
November	422	466	433	359	547	384	483	478	385	355	343
December	445	434	455	393	533	380	376	332	286	321	333
Total	5,240	4,903	4,281	4,664	6,825	5,312	5,562	4,592	4,213	4,232	4,286

Cargo (in tons) per month



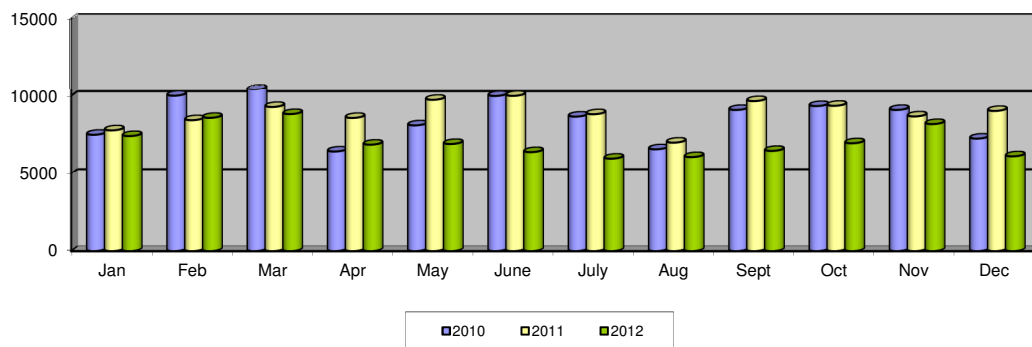
Monthly per type of traffic 2010-2012

Scheduled flights

Passengers

	Jan	Feb	Mar	Apr	May	June	July	Aug	Sept	Oct	Nov	Dec	Total
2010	7,503	10,000	10,441	6,435	8,102	9,983	8,662	6,575	9,088	9,336	9,089	7,258	102,472
2011	7,785	8,435	9,279	8,578	9,736	9,989	8,815	7,001	9,652	9,353	8,673	9,025	106,321
2012	7,420	8,583	8,824	6,870	6,914	6,395	5,978	6,076	6,472	6,962	8,187	6,127	84,808

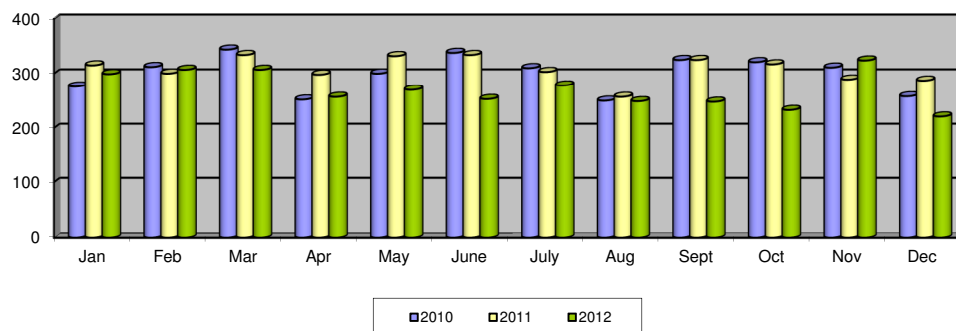
Passengers scheduled flights



Movements

	Jan	Feb	Mar	Apr	May	June	July	Aug	Sept	Oct	Nov	Dec	Total
2010	276	312	344	252	300	338	310	250	325	321	311	258	3,597
2011	315	300	334	298	332	334	303	257	325	317	289	287	3,691
2012	299	307	307	257	270	253	278	249	248	233	324	221	3,246

Movements scheduled flights

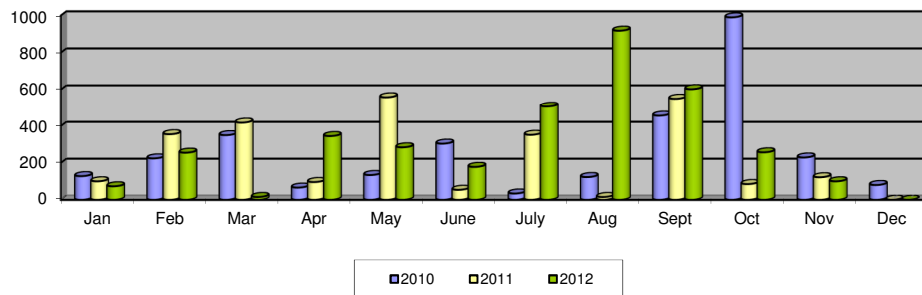


Charter flights

Passengers

	Jan	Feb	Mar	Apr	May	June	July	Aug	Sept	Oct	Nov	Dec	Total
2010	128	224	350	66	134	304	34	123	456	990	229	80	3,118
2011	100	355	418	96	558	54	352	15	550	85	122	0	2,705
2012	73	255	15	345	284	178	506	918	602	257	100	0	3,533

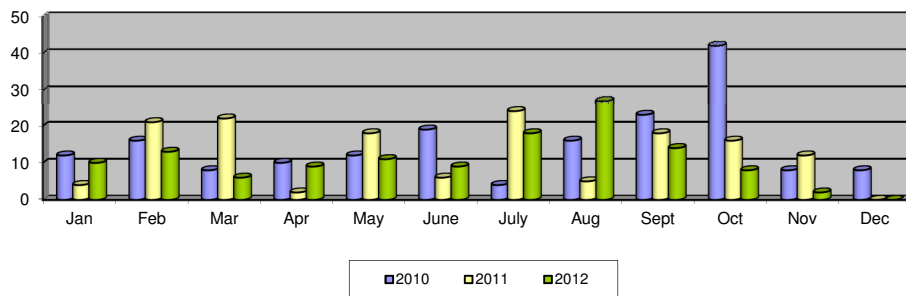
Passengers charter flights



Movements

	Jan	Feb	Mar	Apr	May	June	July	Aug	Sept	Oct	Nov	Dec	Total
2010	12	16	8	10	12	19	4	16	23	42	8	8	178
2011	4	21	22	2	18	6	24	5	18	16	12	0	148
2012	10	13	6	9	11	9	18	27	14	8	2	0	127

Movements charter flights

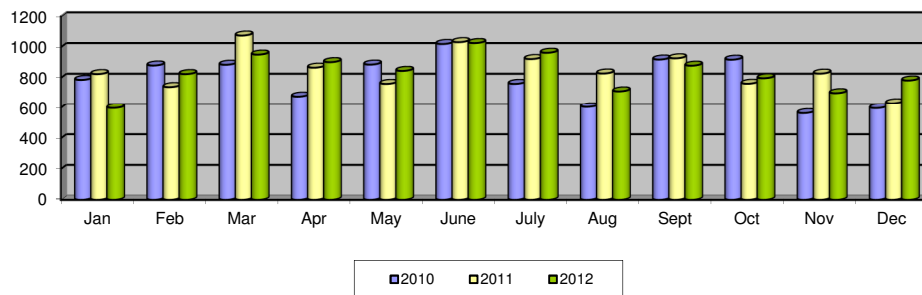


Ad hoc flights + 3 ton

Passengers

	Jan	Feb	Mar	Apr	May	June	July	Aug	Sept	Oct	Nov	Dec	Total
2010	787	881	886	678	887	1,021	761	606	920	919	565	598	9,509
2011	825	740	1,076	867	761	1,033	923	829	928	762	828	633	10,205
2012	599	825	952	903	846	1,027	964	712	880	798	700	783	9,989

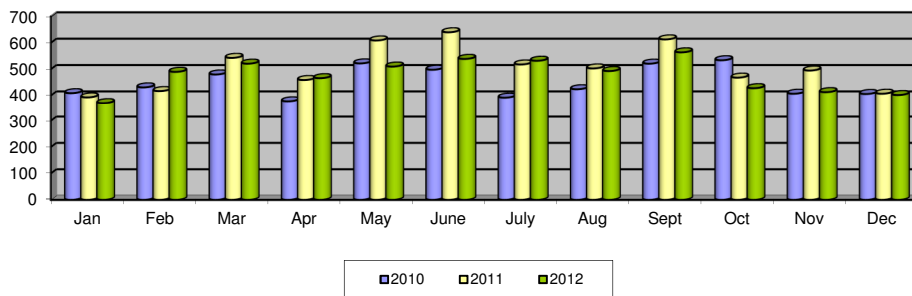
Passengers ad hoc flights +3 ton



Movements

	Jan	Feb	Mar	Apr	May	June	July	Aug	Sept	Oct	Nov	Dec	Total
2010	409	431	480	378	522	498	392	424	521	534	407	406	5,402
2011	393	417	543	459	609	640	518	503	613	468	495	407	6,065
2012	371	490	521	466	510	539	532	493	564	428	413	402	5,729

Movements ad hoc flights +3 ton

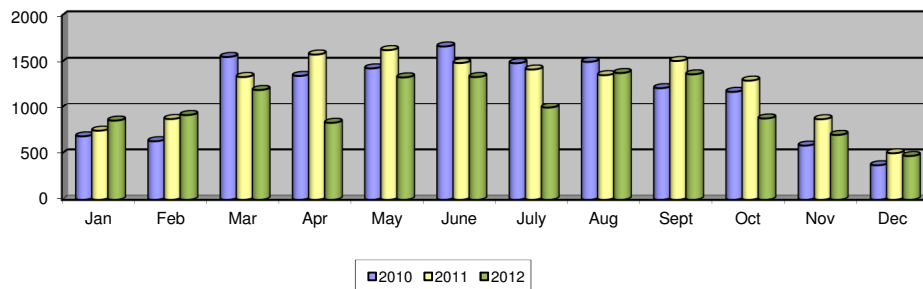


Ad hoc flights – 3 ton

Passengers

	Jan	Feb	Mar	Apr	May	June	July	Aug	Sept	Oct	Nov	Dec	Total
2010	686	633	1,553	1,349	1,430	1,666	1,486	1,500	1,217	1,177	586	373	13,656
2011	747	873	1,337	1,579	1,627	1,488	1,418	1,357	1,510	1,298	871	503	14,608
2012	856	916	1,197	832	1,333	1,337	997	1,380	1,366	879	701	473	12,267

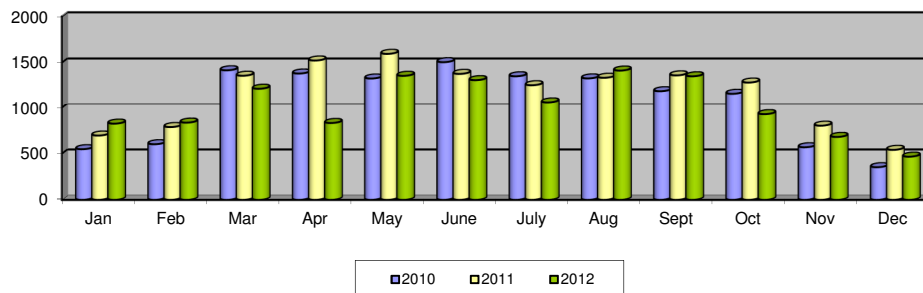
Passengers ad hoc flights -3 ton



Movements

	Jan	Feb	Mar	Apr	May	June	July	Aug	Sept	Oct	Nov	Dec	Total
2010	548	602	1,417	1,382	1,328	1,505	1,352	1,329	1,190	1,162	569	353	12,737
2011	696	788	1,358	1,523	1,595	1,378	1,255	1,336	1,362	1,284	803	541	13,919
2012	825	836	1,217	832	1,357	1,310	1,068	1,414	1,352	928	681	467	12,287

Movements ad hoc flights -3 ton

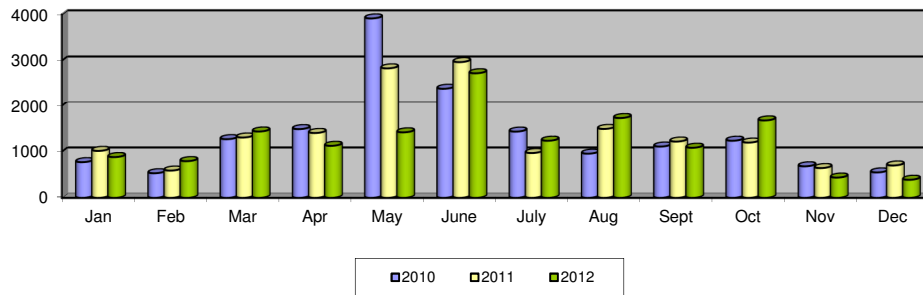


Local flights

Passengers

	Jan	Feb	Mar	Apr	May	June	July	Aug	Sept	Oct	Nov	Dec	Total
2010	772	532	1,270	1,488	3,914	2,390	1,434	956	1,110	1,236	682	550	16,334
2011	1,016	590	1,306	1,404	2,832	2,968	970	1,492	1,218	1,196	644	700	16,336
2012	882	794	1,436	1,126	1,418	2,726	1,236	1,728	1,084	1,676	438	390	14,934

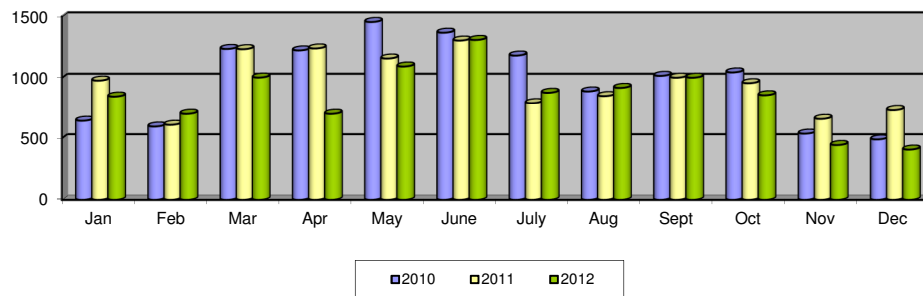
Passengers local flights



Movements

	Jan	Feb	Mar	Apr	May	June	July	Aug	Sept	Oct	Nov	Dec	Total
2010	643	596	1,236	1,224	1,455	1,368	1,182	890	1,017	1,045	538	491	11,685
2011	978	610	1,234	1,240	1,158	1,304	794	852	1,002	957	658	729	11,516
2012	848	699	1,003	699	1,093	1,309	879	919	1,002	859	445	408	10,163

Movements local flights

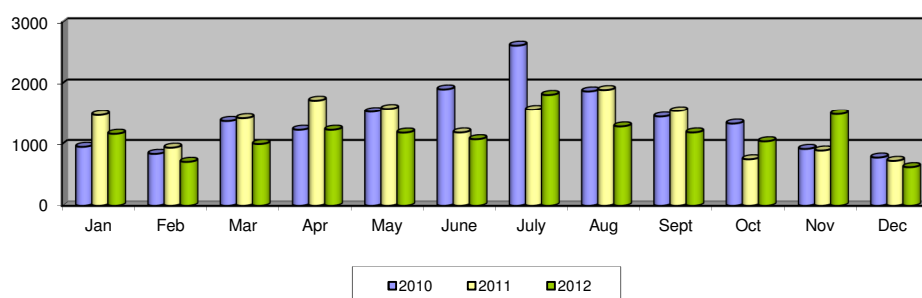


Training flights

Passengers

	Jan	Feb	Mar	Apr	May	June	July	Aug	Sept	Oct	Nov	Dec	Total
2010	956	842	1,376	1,234	1,532	1,904	2,620	1,872	1,450	1,334	922	782	16,824
2011	1,476	942	1,422	1,720	1,583	1,190	1,568	1,894	1,544	754	896	728	15,717
2012	1,168	712	1,002	1,234	1,188	1,080	1,814	1,288	1,190	1,046	1,492	626	13,840

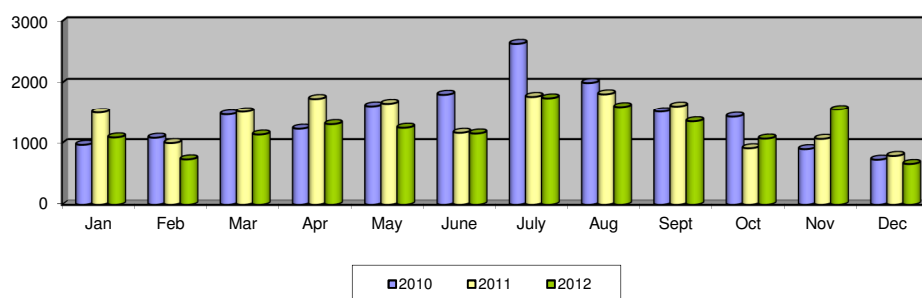
Passengers training flights



Movements

	Jan	Feb	Mar	Apr	May	June	July	Aug	Sept	Oct	Nov	Dec	Total
2010	974	1,090	1,473	1,237	1,617	1,807	2,635	1,998	1,519	1,434	904	732	17,420
2011	1,504	1,003	1,517	1,737	1,659	1,170	1,772	1,814	1,614	918	1,071	793	16,572
2012	1,095	737	1,142	1,311	1,252	1,158	1,748	1,604	1,358	1,076	1,556	662	14,699

Movements training flights



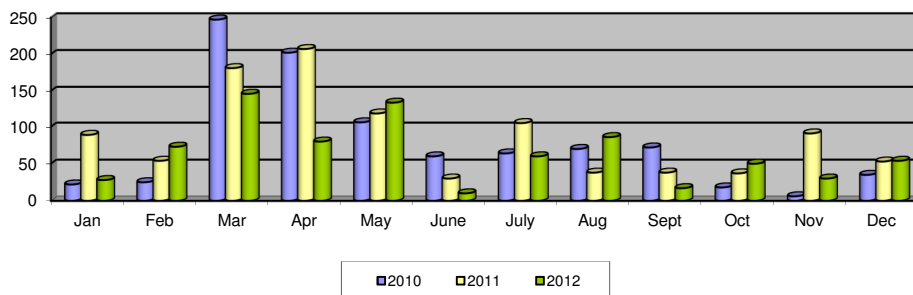
Other flights

(= cargo flights, military flights, photo flights, diversions)

Passengers

	Jan	Feb	Mar	Apr	May	June	July	Aug	Sept	Oct	Nov	Dec	Total
2010	22	25	247	202	106	60	64	70	72	18	6	35	927
2011	89	54	181	207	118	30	105	38	38	37	91	53	1,041
2012	28	73	146	80	134	10	60	86	17	50	30	54	768

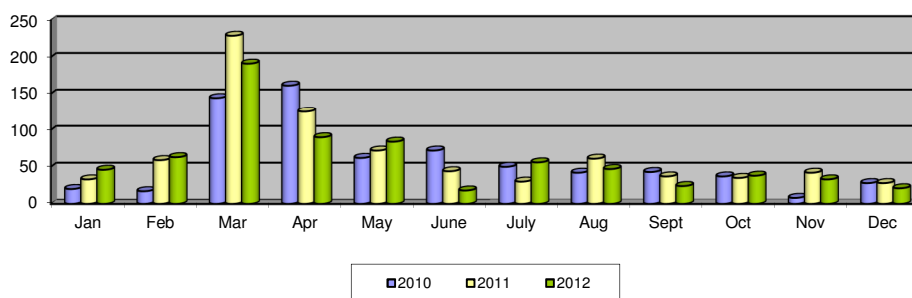
Passengers other flights



Movements

	Jan	Feb	Mar	Apr	May	June	July	Aug	Sept	Oct	Nov	Dec	Total
2010	20	17	144	161	62	72	50	42	43	37	8	28	684
2011	33	59	229	125	72	44	30	61	37	35	42	28	795
2012	46	63	191	90	84	18	56	47	24	38	33	21	711

Movements other flights



Glossary

1. SCHEDULED FLIGHTS

Regular commercial flights.

2. CHARTER FLIGHTS

Flights and accommodation, or flights only, reserved to the members of an association travelling group.

3. AD HOC FLIGHTS (–3 TON AND +3 TON)

Transfer by aircraft for business purposes, or a flight performed by an aircraft with a maximum seat capacity of 7 passengers, for which the planned destination includes one or more landings outside the airport of departure.

4. LOCAL FLIGHTS

- 4.1. Transfer by aircraft for which the airport of departure is the planned destination, so that the flight includes no landings outside the airport of departure.
- 4.2. Maiden flights.

5. TRAINING FLIGHTS

- 5.1. Flight performed by a student-pilot to become a license.
- 5.2. Flight performed
 - for purpose of the issue, renewal or restitution of a certificate of airworthiness;
 - to control ground installations.
- 5.3. Flight performed by an aircraft for crew training.

6. OTHER FLIGHTS

- 6.1. Diversions.

- 6.2. Delivery flight: flight to deliver an aircraft.
- 6.3. Empty flight to bring an aircraft in position.
- 6.4. Military flights.
- 6.5. Flights for exclusive transport of heads of state or members of government in the exercise of their duty.

Vlaamse overheid



Composition

Department Mobility and Public Works
Antwerp Airport
Katleen Pittevels

Responsible publisher

Ir. Fernand Desmyter
Secretaris-generaal

Catalogue number

D/2013/3241/039

Edition March 2013

