



departement
Mobiliteit en
Openbare Werken

ANTWERP AIRPORT

2011 STATISTICAL YEARBOOK



CONTENTS

<u>PREFACE.....</u>	<u>4</u>
<u>EVOLUTION 2001-2011</u>	<u>6</u>
PASSENGERS.....	6
MOVEMENTS	6
CARGO (IN TONS)	6
<u>PER TYPE OF TRAFFIC 2009-2011</u>	<u>7</u>
PASSENGERS.....	7
MOVEMENTS	7
CARGO (IN TONS)	7
<u>EVOLUTION PER MONTH 2001-2011</u>	<u>7</u>
PASSENGERS.....	8
MOVEMENTS	9
CARGO (IN TONS)	10
<u>MONTHLY PER TYPE OF TRAFFIC 2009-2011</u>	<u>11</u>
SCHEDULED FLIGHTS	11
CHARTER FLIGHTS.....	12
AD HOC FLIGHTS + 3 TON	13
AD HOC FLIGHTS – 3 TON.....	14
LOCAL FLIGHTS	15
TRAINING FLIGHTS.....	16
OTHER FLIGHTS	17
<u>GLOSSARY</u>	<u>18</u>

Preface

Antwerp Airport is operated as a Separate Management Service by the Flemish government, Department of Mobility and Public Works. This Statistical Yearbook 2009 contains detailed information about passenger numbers, the number of movements and freight at Antwerp Airport.

In 2011 166,078 passengers travelled via Antwerp Airport. This increase of 2% compared to the year before is mainly due to the increasing number of scheduled and business flights which both carried more passengers.

Scheduled flights to London City and Manchester account for about 63% of passenger numbers, while 15% of the passengers travel on business flights. Passenger numbers on scheduled flights increased by almost 4%, from 102,472 in 2010 to 106,321 in 2011. In 2011 24,813 passengers travelled on charter flights; an increase of 7% compared with 2009.

The number of local flights remained stationary while training flights each decreased by 5% compared with 2010, resulting in a further decrease of nuisance for the residents.

This publication is only available electronically and can be ordered from:

Vlaamse Overheid
Departement Mobiliteit en Openbare Werken
Luchthaven Antwerpen
Luchthavenlei z/n
2100 Antwerpen

Tel: 03-285 65 11
Fax: 03-285 65 01

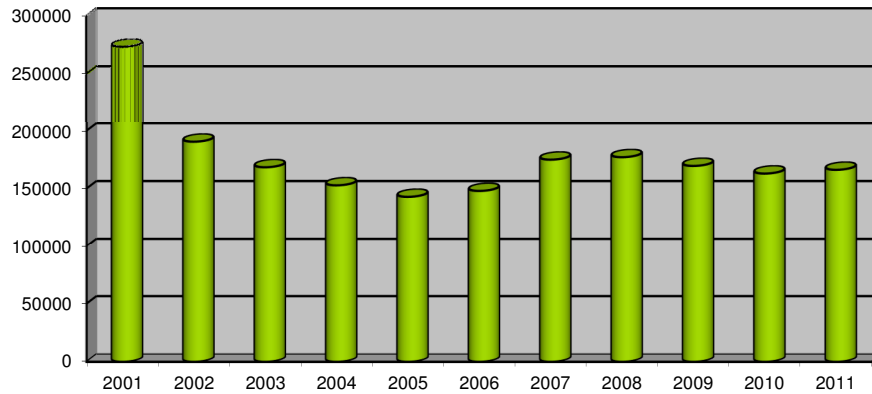
Statistical data may be reproduced provided the source is fully acknowledged.

January 2013
Nederlandstalige versie beschikbaar

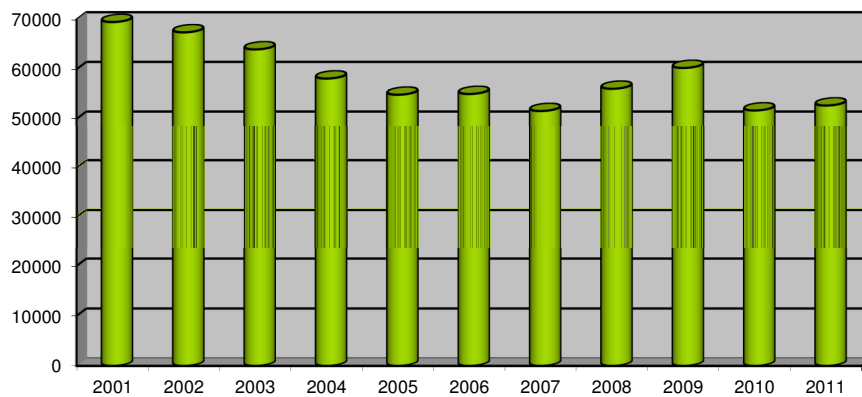
Evolution 2001-2011

	2001	2002	2003	2004	2005	2006	2007	2008	2009	2010	2011
Passengers	273,208	190,362	168,283	152,682	142,737	147,849	174,858	176,971	169,446	162,840	166,078
Movements	69,515	67,435	64,000	58,132	54,871	55,023	51,589	56,072	60,266	51,703	52,701
Cargo (in tons)	6,684	5,240	4,903	4,281	4,664	6,825	5,312	5,562	4,592	4,213	4,232

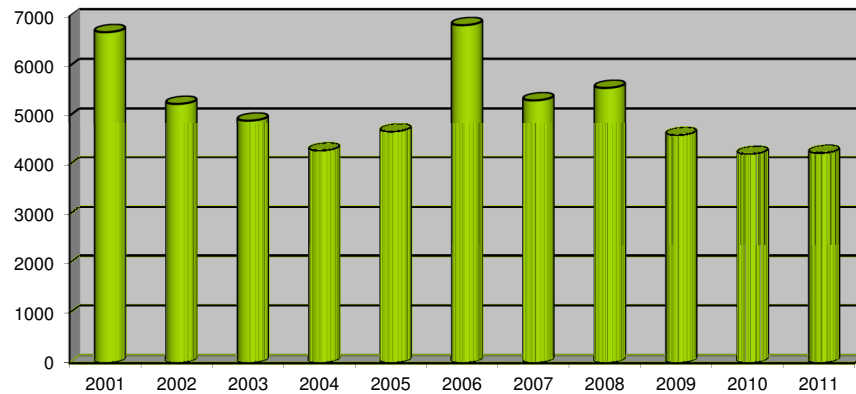
Passengers



Movements



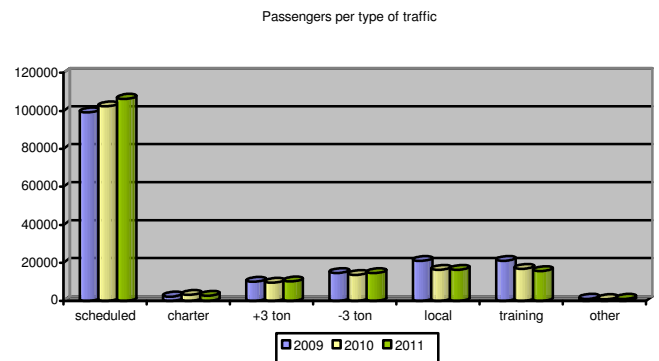
Cargo (in tons)



Per type of traffic 2009-2011

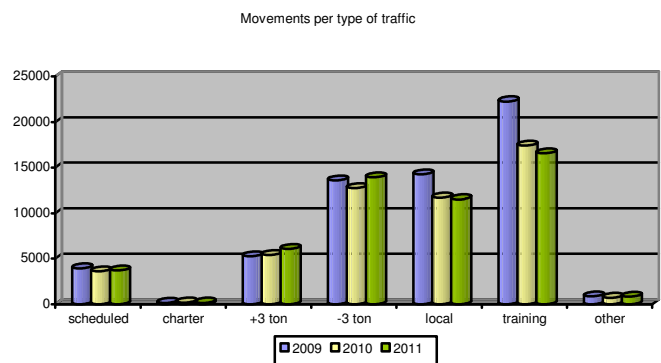
Passengers

	2009	2010	2011
Scheduled flights	99,254	102,472	106,321
Charter flights	2,247	3,118	2,705
Ad hoc +3 ton	9,978	9,509	10,205
Ad hoc -3 ton	14,696	13,656	14,608
Local flights	21,018	16,334	16,336
Training flights	21,082	16,824	15,717
Other flights	1,171	927	1,041
Total	169,446	162,840	166,933



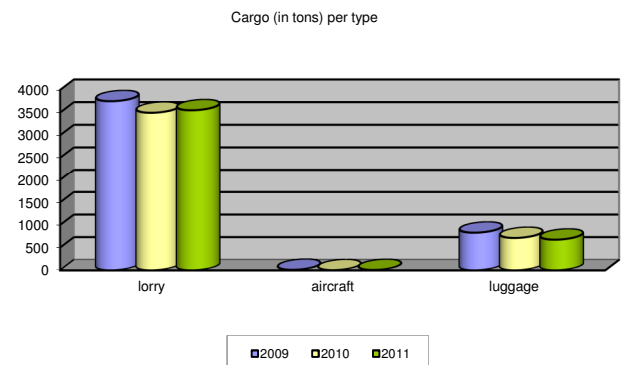
Movements

	2009	2010	2011
Scheduled flights	3,930	3,597	3,691
Charter flights	143	178	148
Ad hoc +3 ton	5,260	5,402	6,065
Ad hoc -3 ton	13,585	12,737	13,919
Local flights	14,250	11,685	11,516
Training flights	22,267	17,420	16,572
Other flights	831	684	795
Total	60,266	51,703	52,706



Cargo (in tons)

	2009	2010	2011
Lorry ¹	3,752	3,497	3,552
Aircraft	10	2	6
Luggage	830	714	676
Total	4,592	4,213	4,234



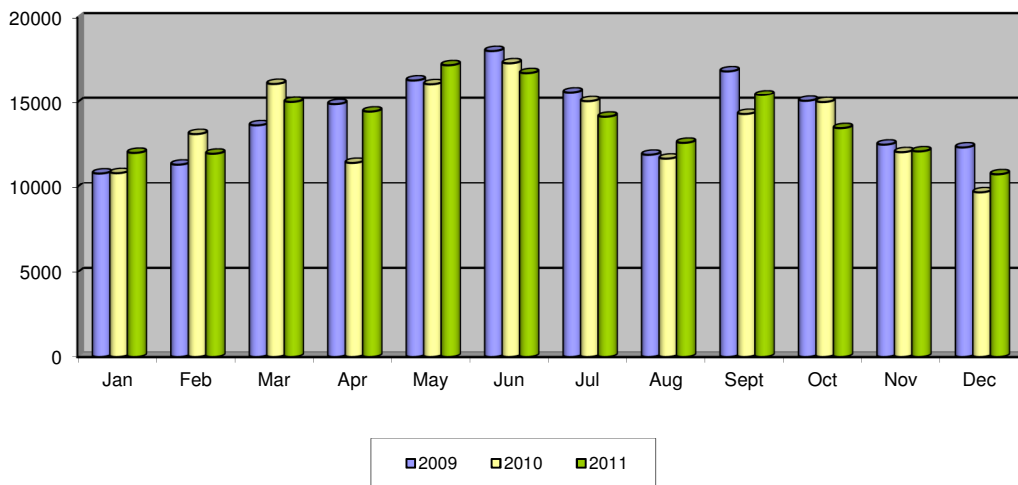
Evolution per month 2001-2011

¹ Road freight by air waybill.

Passengers

	2001	2002	2003	2004	2005	2006	2007	2008	2009	2010	2011
January	20,203	15,169	13,190	10,045	10,057	10,066	11,572	11,651	10,833	10,854	12,038
February	20,450	15,846	13,196	11,549	10,900	10,269	12,380	13,735	11,350	13,137	11,989
March	23,083	20,927	15,826	13,767	11,771	14,279	16,692	13,360	13,648	16,123	15,019
April	21,738	18,273	14,733	12,434	11,992	13,870	16,052	17,818	14,890	11,452	14,451
May	26,766	22,538	16,307	13,116	11,933	13,695	16,459	20,613	16,325	16,105	17,215
June	25,280	15,596	15,703	14,211	14,504	14,420	14,761	16,231	18,045	17,328	16,752
July	22,574	14,034	14,589	12,266	11,727	11,424	13,654	13,862	15,616	15,061	14,151
August	22,729	11,366	12,043	12,602	11,477	9,704	13,480	12,004	11,926	11,702	12,626
September	21,378	14,861	15,057	15,714	13,578	12,464	18,068	17,734	16,855	14,313	15,440
October	22,902	15,149	14,053	13,742	11,555	14,301	16,560	15,034	15,083	15,010	13,485
November	24,989	13,577	12,698	12,745	11,846	13,464	14,530	12,609	12,520	12,079	12,125
December	21,116	13,026	10,888	10,491	11,397	9,893	10,650	12,320	12,355	9,676	10,787
Total	273,208	190,362	168,283	152,682	142,737	147,849	174,858	176,971	169,446	162,840	166,078

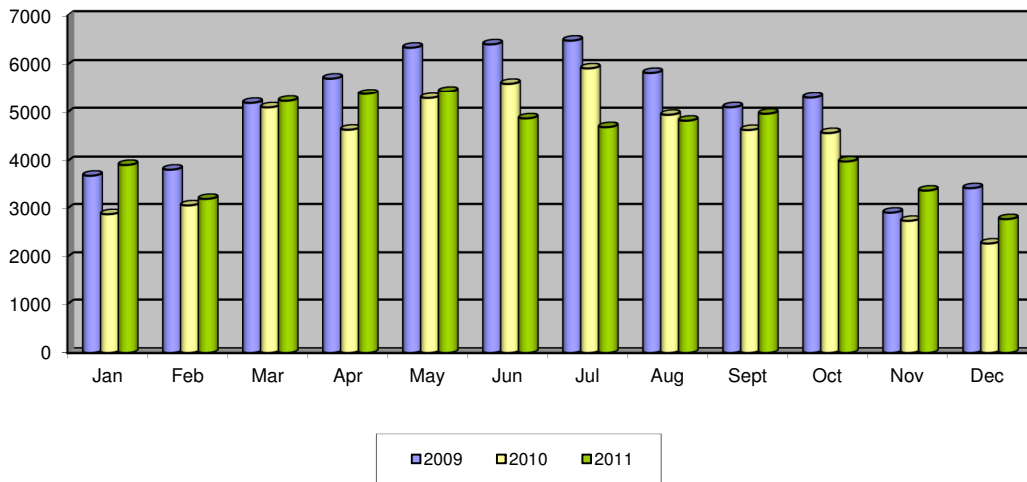
Passengers per month



Movements

	2001	2002	2003	2004	2005	2006	2007	2008	2009	2010	2011
January	5,746	4,249	3,871	3,758	3,972	3,752	3,006	3,336	3,703	2,882	3,923
February	5,263	4,098	5,107	3,816	3,494	3,262	3,482	4,430	3,827	3,064	3,198
March	4,857	6,899	6,232	5,640	4,570	5,532	4,646	3,337	5,194	5,102	5,237
April	6,218	6,906	4,888	5,384	4,634	6,078	5,190	5,302	5,714	4,644	5,384
May	7,194	7,196	6,534	5,796	4,714	5,364	4,880	6,147	6,347	5,296	5,443
June	6,788	6,052	5,996	5,330	5,200	5,922	4,657	5,314	6,416	5,607	4,876
July	6,424	6,083	6,107	5,306	5,029	5,158	4,418	4,981	6,492	5,925	4,696
August	6,804	5,500	5,782	5,978	6,218	3,980	5,419	4,885	5,831	4,949	4,828
September	5,408	6,176	5,715	5,462	5,178	5,038	4,870	5,530	5,104	4,638	4,971
October	6,156	5,086	5,030	5,064	4,530	4,586	4,281	4,833	5,304	4,575	3,995
November	4,685	4,994	4,648	3,668	3,622	3,748	3,805	3,683	2,914	2,745	3,370
December	3,972	4,196	4,090	2,930	3,710	2,603	2,935	4,294	3,420	2,276	2,780
Total	69,515	67,435	64,000	58,132	54,871	55,023	51,589	56,072	60,266	51,703	52,701

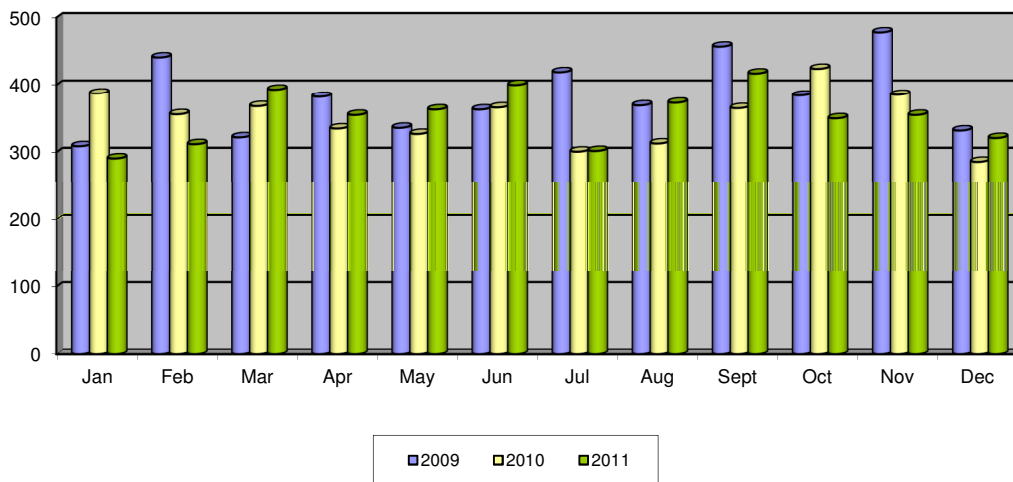
Movements per month



Cargo (in tons)

	2001	2002	2003	2004	2005	2006	2007	2008	2009	2010	2011
January	626	517	471	263	372	448	433	445	309	387	291
February	630	540	413	334	409	593	427	488	441	356	312
March	596	454	307	334	471	535	470	495	322	368	393
April	500	292	308	416	382	449	418	472	382	335	355
May	600	445	389	309	417	742	485	415	336	327	363
June	559	483	377	334	405	631	464	466	363	366	400
July	634	545	521	350	410	513	439	435	419	301	302
August	645	355	420	337	357	526	452	413	369	313	373
September	423	370	413	277	360	677	423	592	457	365	417
October	464	372	384	439	329	631	537	482	384	424	350
November	502	422	466	433	359	547	384	483	478	385	355
December	505	445	434	455	393	533	380	376	332	286	321
Total	6,684	5,240	4,903	4,281	4,664	6,825	5,312	5,562	4,592	4,213	4,232

Cargo (in tons) per month



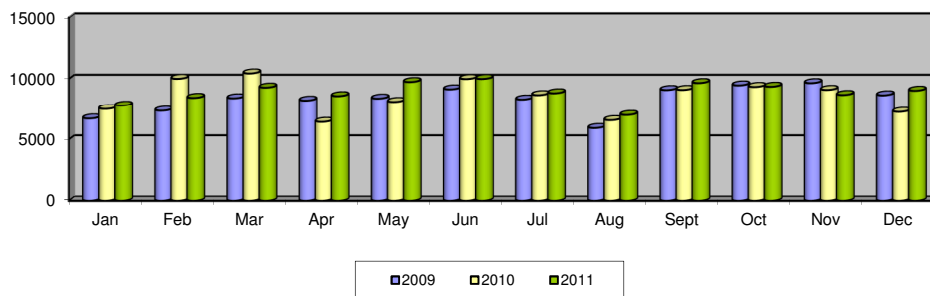
Monthly per type of traffic 2009-2011

Scheduled flights

Passengers

	Jan.	Feb.	Mar.	Apr.	May	Jun.	Jul.	Aug.	Sept.	Oct.	Nov.	Dec.	Total
2009	6,712	7,354	8,402	8,211	8,377	9,133	8,301	5,932	9,080	9,459	9,647	8,646	99,254
2010	7,503	10,000	10,441	6,435	8,102	9,983	8,662	6,575	9,088	9,336	9,089	7,258	102,472
2011	7,785	8,435	9,279	8,578	9,736	9,989	8,815	7,001	9,652	9,353	8,673	9,025	106,321

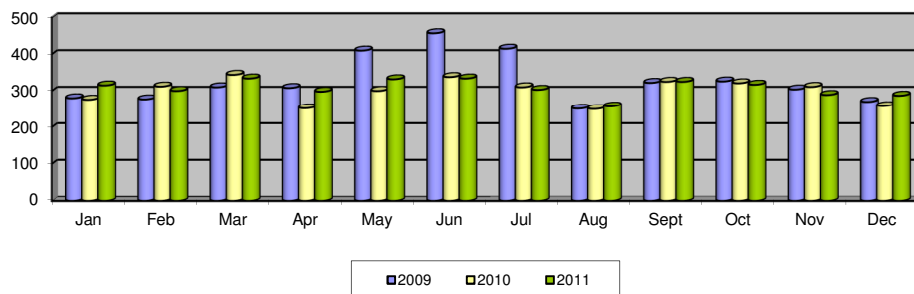
Passengers scheduled flights



Movements

	Jan.	Feb.	Mar.	Apr.	May	Jun.	Jul.	Aug.	Sept.	Oct.	Nov.	Dec.	Total
2009	280	277	310	308	410	457	415	251	322	326	304	270	3,930
2010	276	312	344	252	300	338	310	250	325	321	311	258	3,597
2011	315	300	334	298	332	334	303	257	325	317	289	287	3,691

Movements scheduled flights

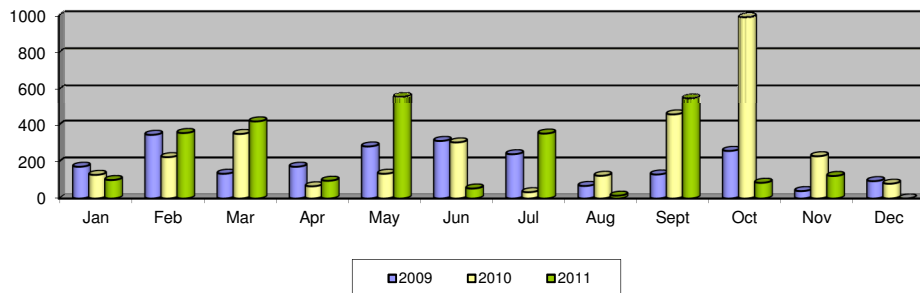


Charter flights

Passengers

	Jan.	Feb.	Mar.	Apr.	May	Jun.	Jul.	Aug.	Sept.	Oct.	Nov.	Dec.	Total
2009	172	345	134	172	282	312	240	68	130	258	40	94	2,247
2010	128	224	350	66	134	304	34	123	456	990	229	80	3,118
2011	100	355	418	96	558	54	352	15	550	85	122	0	2,705

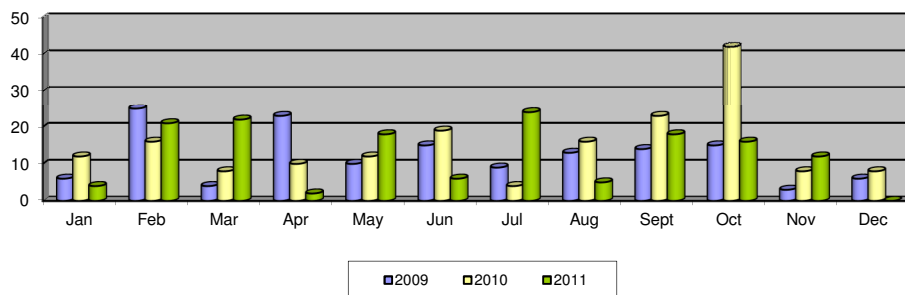
Passengers charter flights



Movements

	Jan.	Feb.	Mar.	Apr.	May	Jun.	Jul.	Aug.	Sept.	Oct.	Nov.	Dec.	Total
2009	6	25	4	23	10	15	9	13	14	15	3	6	143
2010	12	16	8	10	12	19	4	16	23	42	8	8	178
2011	4	21	22	2	18	6	24	5	18	16	12	0	148

Movements charter flights

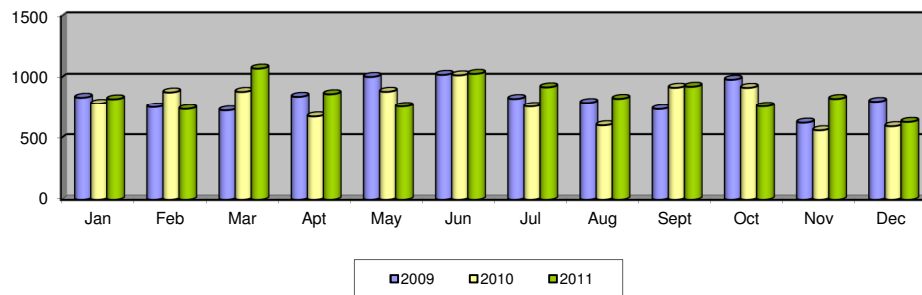


Ad hoc flights + 3 ton

Passengers

	Jan.	Feb.	Mar.	Apr.	May	Jun.	Jul.	Aug.	Sept.	Oct.	Nov.	Dec.	Total
2009	838	756	728	846	1,008	1,025	828	794	739	985	627	804	9,978
2010	787	881	886	678	887	1,021	761	606	920	919	565	598	9,509
2011	825	740	1,076	867	761	1,033	923	829	928	762	828	633	10,205

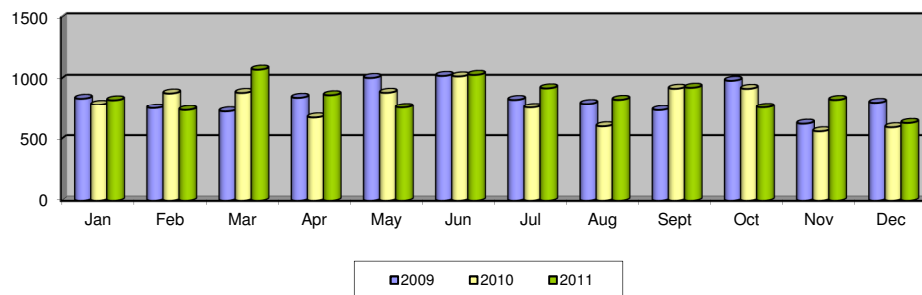
Passengers ad hoc flights +3 ton



Movements

	Jan.	Feb.	Mar.	Apr.	May	Jun.	Jul.	Aug.	Sept.	Oct.	Nov.	Dec.	Total
2009	424	415	430	414	467	450	448	442	493	463	450	364	5,260
2010	409	431	480	378	522	498	392	424	521	534	407	406	5,402
2011	393	417	543	459	609	640	518	503	613	468	495	407	6,065

Movements ad hoc flights +3 ton

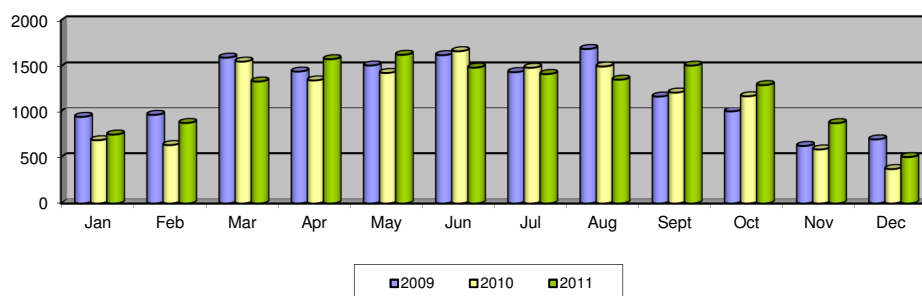


Ad hoc flights – 3 ton

Passengers

	Jan.	Feb.	Mar.	Apr.	May	Jun.	Jul.	Aug.	Sept.	Oct.	Nov.	Dec.	Total
2009	939	961	1,596	1,445	1,511	1,623	1,439	1,690	1,174	999	624	695	14,696
2010	686	633	1,553	1,349	1,430	1,666	1,486	1,500	1,217	1,177	586	373	13,656
2011	747	873	1,337	1,579	1,627	1,488	1,418	1,357	1,510	1,298	871	503	14,608

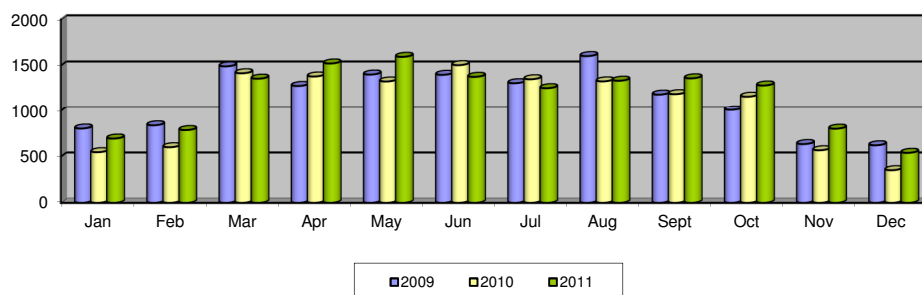
Passengers ad hoc flights -3 ton



Movements

	Jan.	Feb.	Mar.	Apr.	May	Jun.	Jul.	Aug.	Sept.	Oct.	Nov.	Dec.	Total
2009	805	840	1,492	1,279	1,403	1,400	1,309	1,603	1,185	1,010	636	623	13,585
2010	548	602	1,417	1,382	1,328	1,505	1,352	1,329	1,190	1,162	569	353	12,737
2011	696	788	1,358	1,523	1,595	1,378	1,255	1,336	1,362	1,284	803	541	13,919

Movements ad hoc flights -3 ton

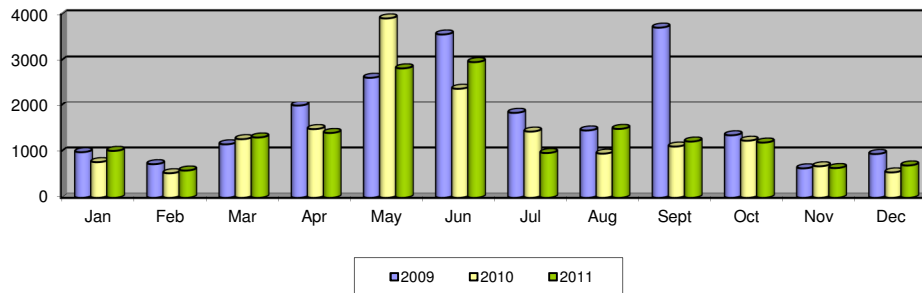


Local flights

Passengers

	Jan.	Feb.	Mar.	Apr.	May	Jun.	Jul.	Aug.	Sept.	Oct.	Nov.	Dec.	Total
2009	988	728	1,158	1,998	2,628	3,566	1,840	1,458	3,714 ²	1,354	638	948	21,018
2010	772	532	1,270	1,488	3,914	2,390	1,434	956	1,110	1,236	682	550	16,334
2011	1,016	590	1,306	1,404	2,832	2,968	970	1,492	1,218	1,196	644	700	16,336

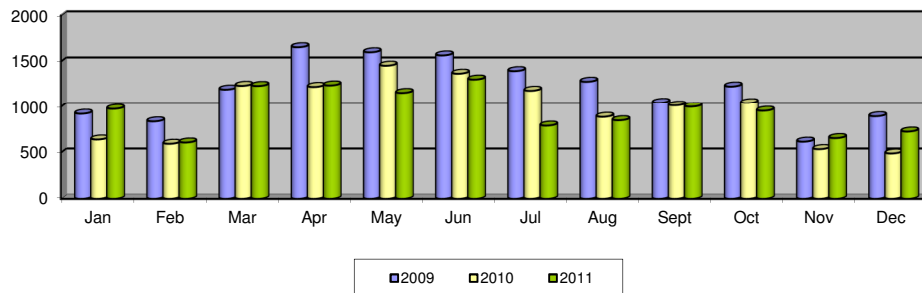
Passengers local flights



Movements

	Jan.	Feb.	Mar.	Apr.	May	Jun.	Jul.	Aug.	Sept.	Oct.	Nov.	Dec.	Total
2009	924	840	1,195	1,656	1,601	1,567	1,396	1,280	1,048	1,228	619	896	14,250
2010	643	596	1,236	1,224	1,455	1,368	1,182	890	1,017	1,045	538	491	11,685
2011	978	610	1,234	1,240	1,158	1,304	794	852	1,002	957	658	729	11,516

Movements local flights



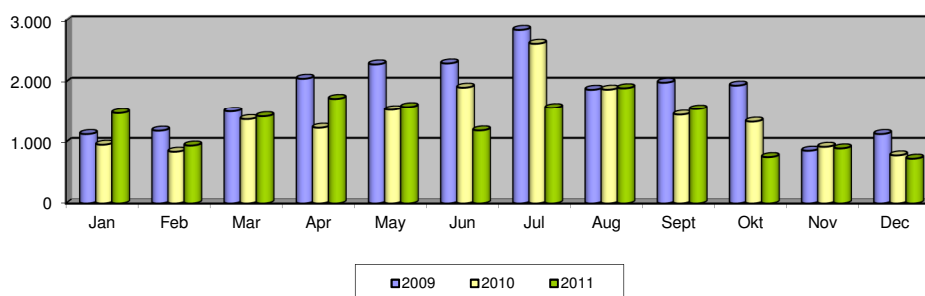
² On 29 September 2009 the 28th "Luchtvaartdag" took place whereby over 1,500 disabled children made their first flight. In total, about 50 flights were performed.

Training flights

Passengers

	Jan.	Feb.	Mar.	Apr.	May	Jun.	Jul.	Aug.	Sept.	Oct.	Nov.	Dec.	Total
2009	1,130	1,186	1,504	2,050	2,284	2,300	2,846	1,870	1,986	1,938	858	1,130	21,082
2010	956	842	1,376	1,234	1,532	1,904	2,620	1,872	1,450	1,334	922	782	16,824
2011	1,476	942	1,422	1,720	1,583	1,190	1,568	1,894	1,544	754	896	728	15,717

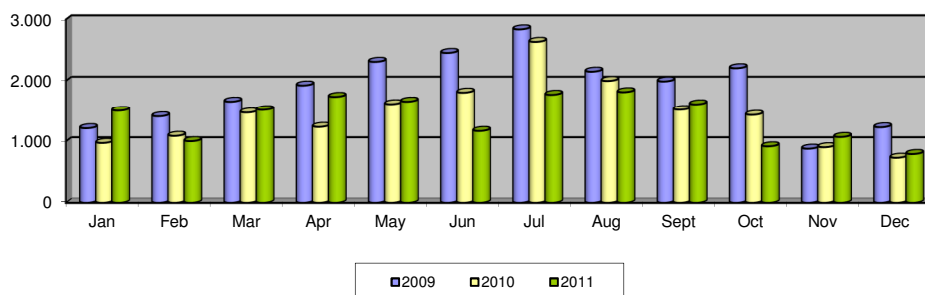
Passengers training flights



Movements

	Jan.	Feb.	Mar.	Apr.	May	Jun.	Jul.	Aug.	Sept.	Oct.	Nov.	Dec.	Total
2009	1,215	1,410	1,659	1,923	2,310	2,455	2,839	2,150	1,990	2,206	880	1,230	22,267
2010	974	1,090	1,473	1,237	1,617	1,807	2,635	1,998	1,519	1,434	904	732	17,420
2011	1,504	1,003	1,517	1,737	1,659	1,170	1,772	1,814	1,614	918	1,071	793	16,572

Movements training flights



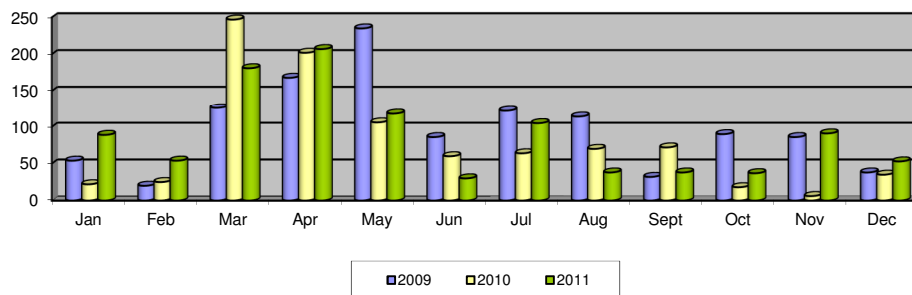
Other flights

(= cargo flights, military flights, photo flights, diversions)

Passengers

	Jan.	Feb.	Mar.	Apr.	May	Jun.	Jul.	Aug.	Sept.	Oct.	Nov.	Dec.	Total
2009	54	20	126	168	235	86	122	114	32	90	86	38	1,171
2010	22	25	247	202	106	60	64	70	72	18	6	35	927
2011	89	54	181	207	118	30	105	38	38	37	91	53	1,041

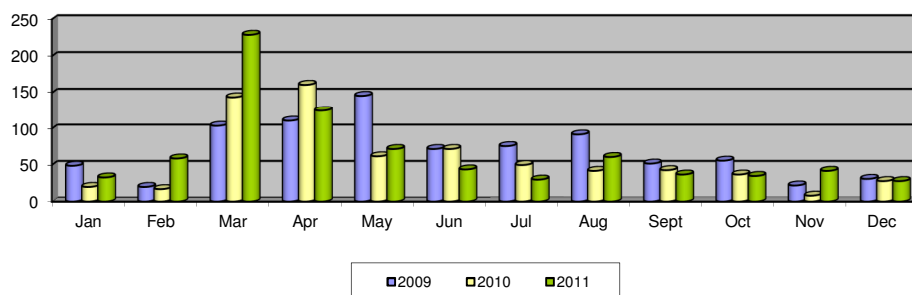
Movements other flights



Movements

	Jan.	Feb.	Mar.	Apr.	May	Jun.	Jul.	Aug.	Sept.	Oct.	Nov.	Dec.	Total
2009	49	20	104	111	146	72	76	92	52	56	22	31	831
2010	20	17	144	161	62	72	50	42	43	37	8	28	684
2011	33	59	229	125	72	44	30	61	37	35	42	28	795

Movements other flights



Glossary

1. SCHEDULED FLIGHTS

Regular commercial flights.

2. CHARTER FLIGHTS

Flights and accommodation, or flights only, reserved to the members of an association travelling group.

3. AD HOC FLIGHTS (–3 TON AND +3 TON)

Transfer by aircraft for business purposes, or a flight performed by an aircraft with a maximum seat capacity of 7 passengers, for which the planned destination includes one or more landings outside the airport of departure.

4. LOCAL FLIGHTS

- 4.1. Transfer by aircraft for which the airport of departure is the planned destination, so that the flight includes no landings outside the airport of departure.
- 4.2. Maiden flights.

5. TRAINING FLIGHTS

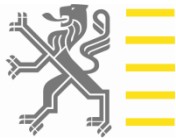
- 5.1. Flight performed by a student-pilot to become a license.
- 5.2. Flight performed
 - for purpose of the issue, renewal or restitution of a certificate of airworthiness;
 - to control ground installations.
- 5.3. Flight performed by an aircraft for crew training.

6. OTHER FLIGHTS

- 6.1. Diversions.

- 6.2. Delivery flight: flight to deliver an aircraft.
- 6.3. Empty flight to bring an aircraft in position.
- 6.4. Military flights.
- 6.5. Flights for exclusive transport of heads of state or members of government in the exercise of their duty.

Vlaamse overheid



Composition

Department Mobility and Public Works
Antwerp Airport
Katleen Pittevels

Responsible publisher

Ir. Fernand Desmyter
Secretaris-generaal

Catalogue number

D/2012/3241/038

Edition March 2013

