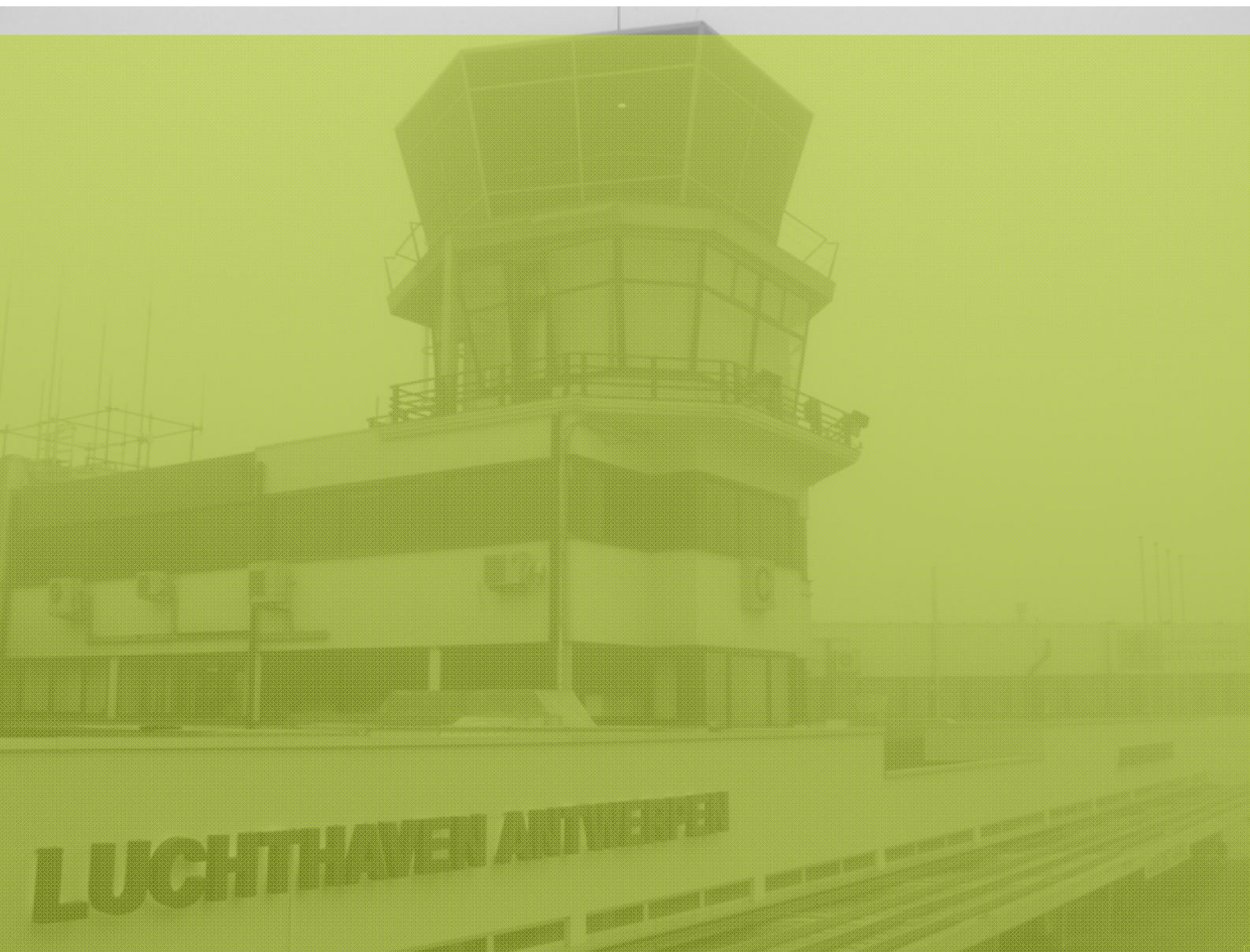




*departement*  
**Mobiliteit en**  
**Openbare Werken**

# ANTWERP AIRPORT

## 2010 STATISTICAL YEARBOOK





## CONTENTS

<b><u>PREFACE.....</u></b>	<b><u>4</u></b>
<b><u>EVOLUTION 2000-2010 .....</u></b>	<b><u>6</u></b>
PASSENGERS.....	6
MOVEMENTS .....	6
CARGO (IN TONS) .....	6
<b><u>PER TYPE OF TRAFFIC 2008-2010 .....</u></b>	<b><u>7</u></b>
PASSENGERS.....	7
MOVEMENTS .....	7
CARGO (IN TONS) .....	7
<b><u>EVOLUTION PER MONTH 2000-2010 .....</u></b>	<b><u>8</u></b>
PASSENGERS.....	8
MOVEMENTS .....	9
CARGO (IN TONS) .....	10
<b><u>MONTHLY PER TYPE OF TRAFFIC 2008-2010 .....</u></b>	<b><u>11</u></b>
SCHEDULED FLIGHTS .....	11
CHARTER FLIGHTS.....	12
AD HOC FLIGHTS + 3 TON .....	13
AD HOC FLIGHTS – 3 TON.....	14
LOCAL FLIGHTS .....	15
TRAINING FLIGHTS.....	16
OTHER FLIGHTS .....	17
<b><u>GLOSSARY .....</u></b>	<b><u>19</u></b>



## Preface

Antwerp Airport is operated as a Separate Management Service by the Flemish government, Department of Mobility and Public Works. This Statistical Yearbook 2009 contains detailed information about passenger numbers, the number of movements and freight at Antwerp Airport.

In 2010 162,840 passengers travelled via Antwerp Airport. This decrease of almost 4% compared to the year before is mainly due to the decreasing number of local and training flights. Passenger numbers increased on both scheduled flights and charter flights.

Scheduled flights to London City and Manchester account for almost 63% of passenger numbers, while 2% of the passengers travel on charter flights. Passenger number on scheduled flights increased by 5%, from 97,057 in 2009 to 102,472 in 2010. In 2010 3,118 passengers travelled on charter flights; an increase of 38% compared with 2009.

Local flights and training flights each decreased by about 20% compared with 2009. A decrease of nuisance for the residents shows from the decreasing number of complaints from 110 in 2009 to 80 in 2010.

This publication is only available electronically and can be ordered from:

Vlaamse Overheid  
Departement Mobiliteit en Openbare Werken  
**Luchthaven Antwerpen**  
Luchthavenlei z/n  
2100 Antwerpen

Tel: 03-285 65 11  
Fax: 03-285 65 01

Statistical data may be reproduced provided the source is fully acknowledged.

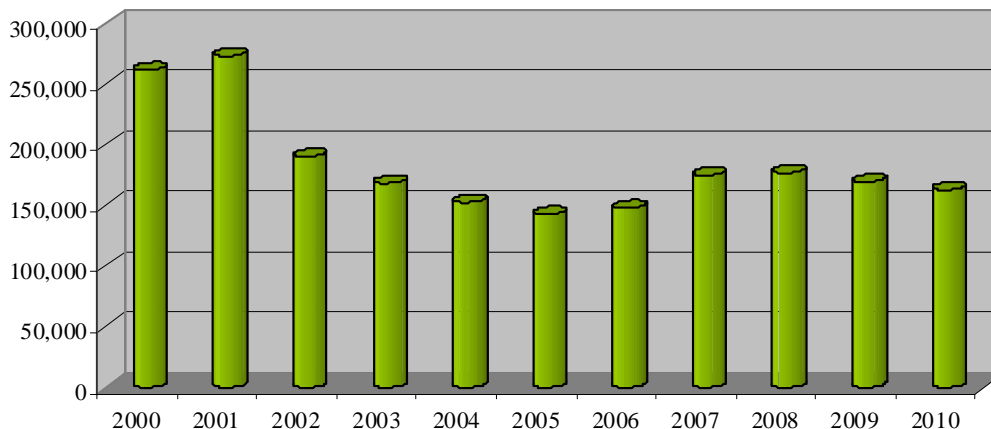
January 2011  
Nederlandstalige versie beschikbaar



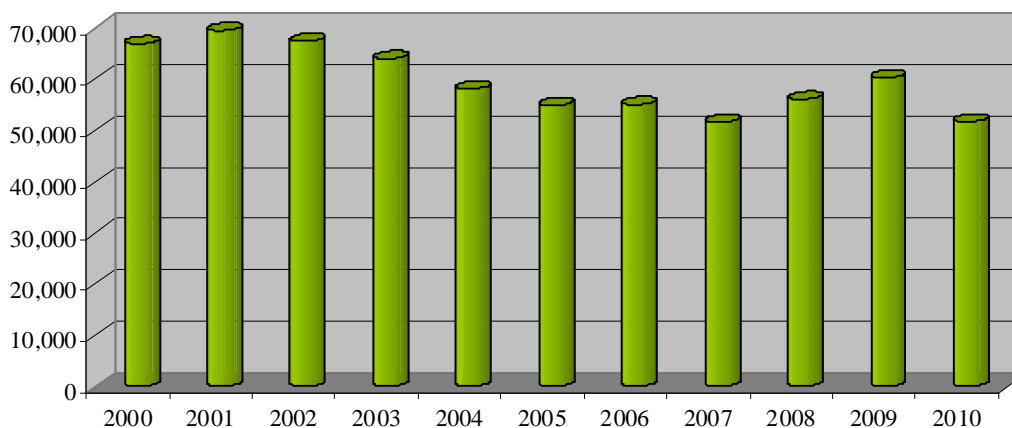
## Evolution 2000-2010

	2000	2001	2002	2003	2004	2005	2006	2007	2008	2009	2010
<b>Passengers</b>	261,576	273,208	190,362	168,283	152,682	142,737	147,849	174,858	176,971	169,446	<b>162,840</b>
<b>Movements</b>	66,909	69,515	67,435	64,000	58,132	54,871	55,023	51,589	56,072	60,266	<b>51,703</b>
<b>Cargo (in tons)</b>	7,997	6,684	5,240	4,903	4,281	4,664	6,825	5,312	5,562	4,592	<b>4,213</b>

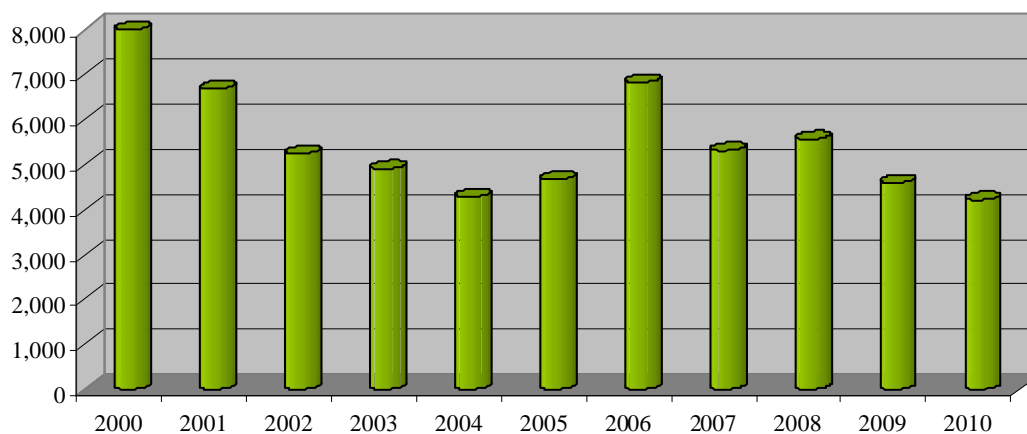
### Passengers



### Movements



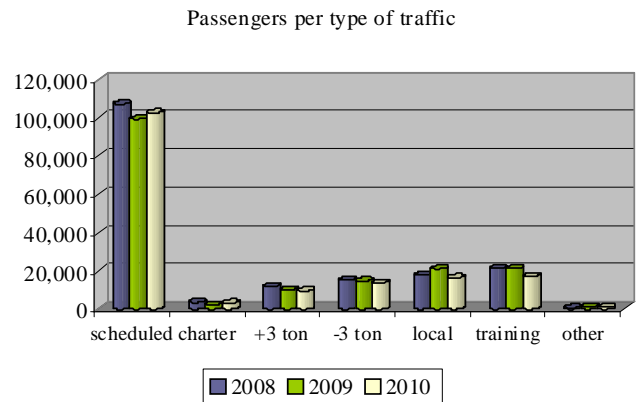
### Cargo (in tons)



## Per type of traffic 2008-2010

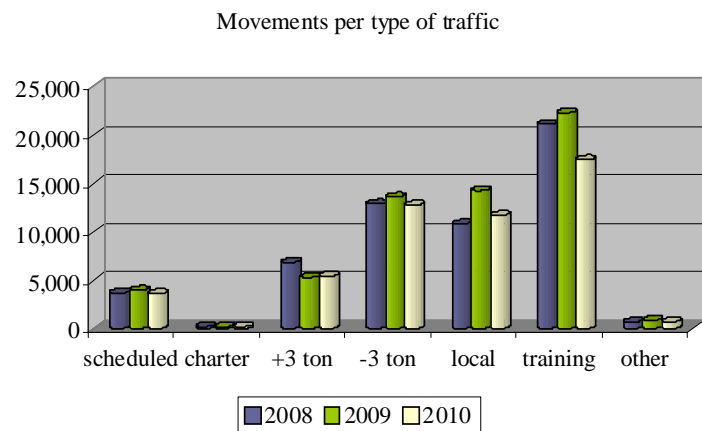
### Passengers

	2008	2009	2010
Scheduled flights	107,071	99,254	102,472
Charter flights	3,483	2,247	3,118
Ad hoc +3 ton	11,756	9,978	9,509
Ad hoc -3 ton	15,138	14,696	13,656
Local flights	17,612	21,018	16,334
Training flights	21,178	21,082	16,824
Other flights	733	1,171	927
<b>Total</b>	<b>176,971</b>	<b>169,446</b>	<b>162,840</b>



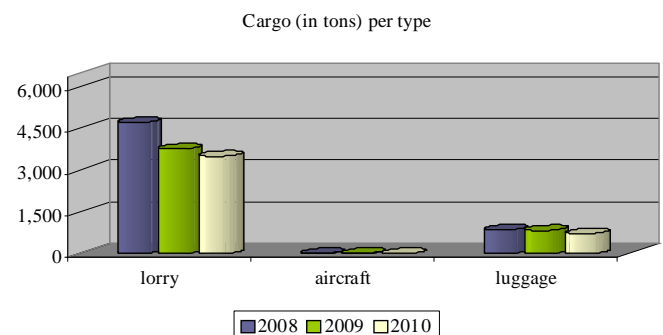
### Movements

	2008	2009	2010
Scheduled flights	3,648	3,930	3,597
Charter flights	178	143	178
Ad hoc +3 ton	6,834	5,260	5,402
Ad hoc -3 ton	12,863	13,585	12,737
Local flights	10,799	14,250	11,685
Training flights	21,110	22,267	17,420
Other flights	640	831	684
<b>Total</b>	<b>56,072</b>	<b>60,266</b>	<b>51,703</b>



### Cargo (in tons)

	2008	2009	2010
Lorry <sup>1</sup>	4,704	3,752	3,497
Aircraft	7	10	2
Luggage	851	830	714
<b>Total</b>	<b>5,562</b>	<b>4,592</b>	<b>4,213</b>



<sup>1</sup> Road freight by air waybill.

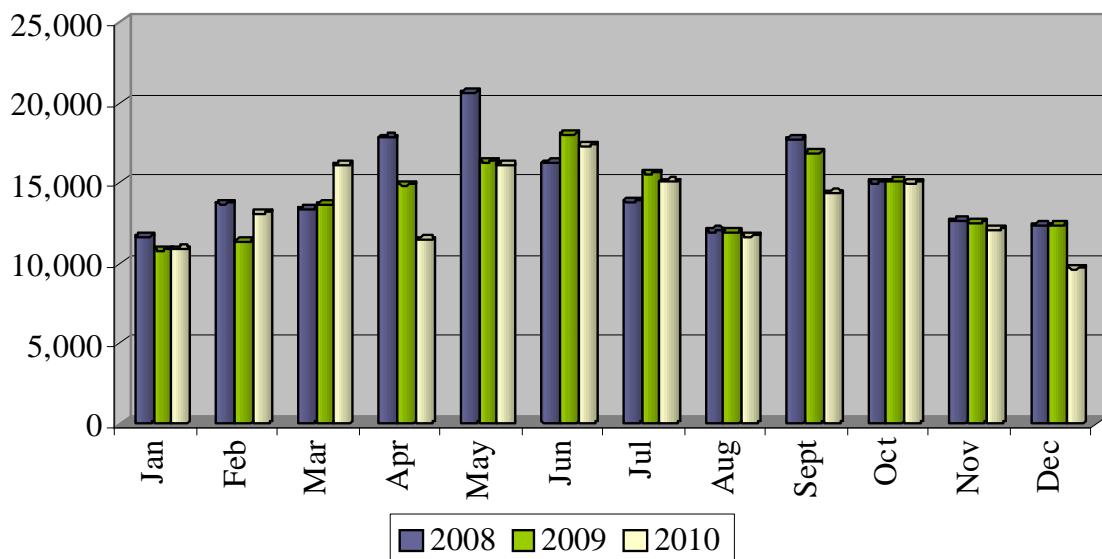


## Evolution per month 2000-2010

### Passengers

	2000	2001	2002	2003	2004	2005	2006	2007	2008	2009	2010
January	17,848	20,203	15,169	13,190	10,045	10,057	10,066	11,572	11,651	10,833	10,854
February	19,592	20,450	15,846	13,196	11,549	10,900	10,269	12,380	13,735	11,350	13,137
March	21,092	23,083	20,927	15,826	13,767	11,771	14,279	16,692	13,360	13,648	16,123
April	20,899	21,738	18,273	14,733	12,434	11,992	13,870	16,052	17,818	14,890	11,452
May	25,890	26,766	22,538	16,307	13,116	11,933	13,695	16,459	20,613	16,325	16,105
June	24,965	25,280	15,596	15,703	14,211	14,504	14,420	14,761	16,231	18,045	17,328
July	22,225	22,574	14,034	14,589	12,266	11,727	11,424	13,654	13,862	15,616	15,061
August	20,977	22,729	11,366	12,043	12,602	11,477	9,704	13,480	12,004	11,926	11,702
September	22,897	21,378	14,861	15,057	15,714	13,578	12,464	18,068	17,734	16,855	14,313
October	22,785	22,902	15,149	14,053	13,742	11,555	14,301	16,560	15,034	15,083	15,010
November	22,769	24,989	13,577	12,698	12,745	11,846	13,464	14,530	12,609	12,520	12,079
December	19,637	21,116	13,026	10,888	10,491	11,397	9,893	10,650	12,320	12,355	9,676
<b>Total</b>	<b>261,576</b>	<b>273,208</b>	<b>190,362</b>	<b>168,283</b>	<b>152,682</b>	<b>142,737</b>	<b>147,849</b>	<b>174,858</b>	<b>176,971</b>	<b>169,446</b>	<b>162,840</b>

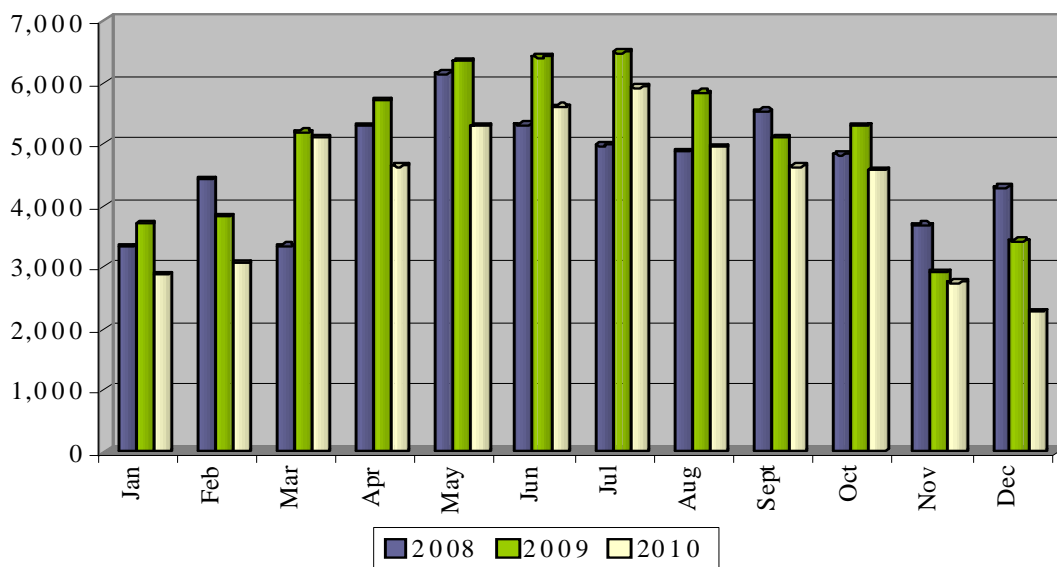
### Passengers per month



## Movements

	2000	2001	2002	2003	2004	2005	2006	2007	2008	2009	2010
January	4,902	5,746	4,249	3,871	3,758	3,972	3,752	3,006	3,336	3,703	2,882
February	6,106	5,263	4,098	5,107	3,816	3,494	3,262	3,482	4,430	3,827	3,064
March	5,444	4,857	6,899	6,232	5,640	4,570	5,532	4,646	3,337	5,194	5,102
April	6,207	6,218	6,906	4,888	5,384	4,634	6,078	5,190	5,302	5,714	4,644
May	6,142	7,194	7,196	6,534	5,796	4,714	5,364	4,880	6,147	6,347	5,296
June	6,741	6,788	6,052	5,996	5,330	5,200	5,922	4,657	5,314	6,416	5,607
July	6,136	6,424	6,083	6,107	5,306	5,029	5,158	4,418	4,981	6,492	5,925
August	6,296	6,804	5,500	5,782	5,978	6,218	3,980	5,419	4,885	5,831	4,949
September	5,336	5,408	6,176	5,715	5,462	5,178	5,038	4,870	5,530	5,104	4,638
October	4,849	6,156	5,086	5,030	5,064	4,530	4,586	4,281	4,833	5,304	4,575
November	5,416	4,685	4,994	4,648	3,668	3,622	3,748	3,805	3,683	2,914	2,745
December	3,334	3,972	4,196	4,090	2,930	3,710	2,603	2,935	4,294	3,420	2,276
<b>Total</b>	<b>66,909</b>	<b>69,515</b>	<b>67,435</b>	<b>64,000</b>	<b>58,132</b>	<b>54,871</b>	<b>55,023</b>	<b>51,589</b>	<b>56,072</b>	<b>60,266</b>	<b>51,703</b>

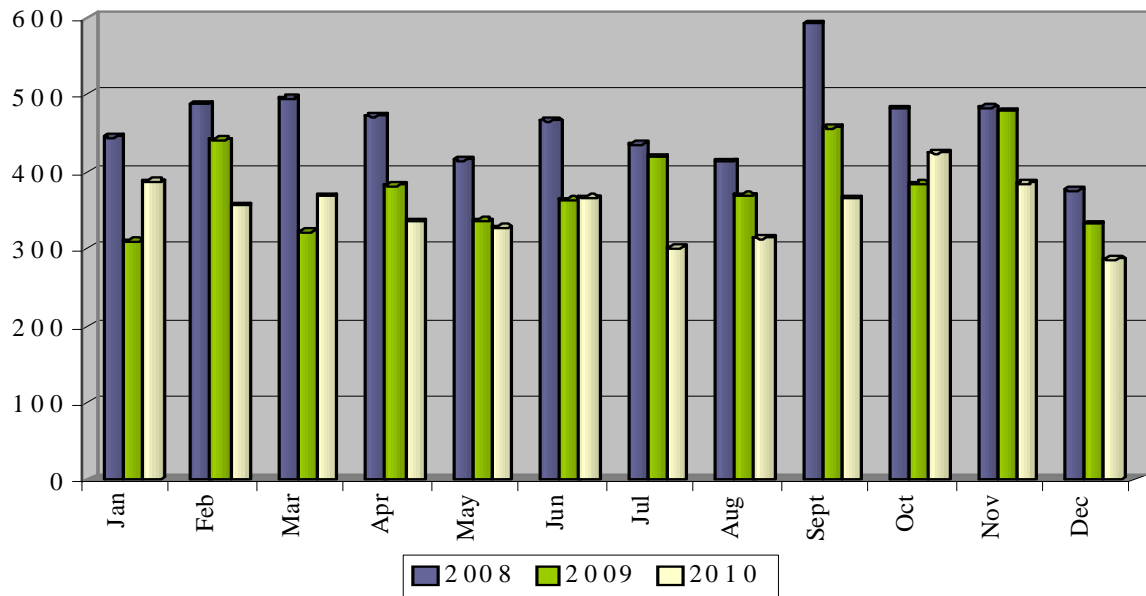
Movements per month



## Cargo (in tons)

	2000	2001	2002	2003	2004	2005	2006	2007	2008	2009	2010
January	681	626	517	471	263	372	448	433	445	309	387
February	526	630	540	413	334	409	593	427	488	441	356
March	561	596	454	307	334	471	535	470	495	322	368
April	573	500	292	308	416	382	449	418	472	382	335
May	828	600	445	389	309	417	742	485	415	336	327
June	820	559	483	377	334	405	631	464	466	363	366
July	584	634	545	521	350	410	513	439	435	419	301
August	742	645	355	420	337	357	526	452	413	369	313
September	709	423	370	413	277	360	677	423	592	457	365
October	649	464	372	384	439	329	631	537	482	384	424
November	619	502	422	466	433	359	547	384	483	478	385
December	705	505	445	434	455	393	533	380	376	332	286
<b>Total</b>	<b>7,997</b>	<b>6,684</b>	<b>5,240</b>	<b>4,903</b>	<b>4,281</b>	<b>4,664</b>	<b>6,825</b>	<b>5,312</b>	<b>5,562</b>	<b>4,592</b>	<b>4,213</b>

Cargo (in tons) per month



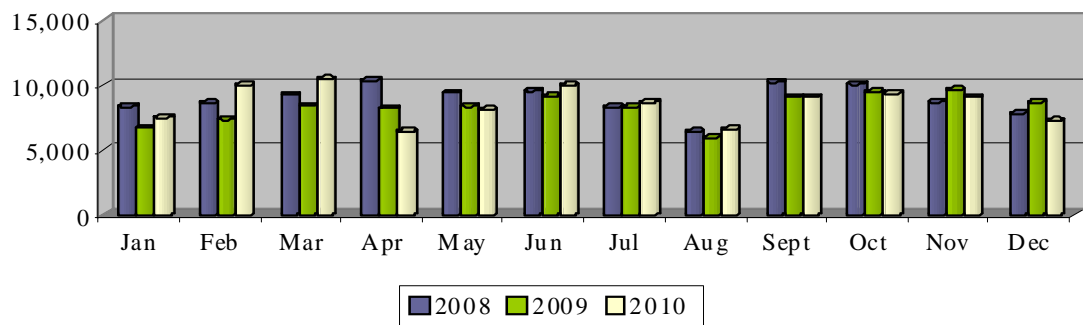
## Monthly per type of traffic 2008-2010

### Scheduled flights

#### Passengers

	Jan.	Feb.	Mar.	Apr.	May	Jun.	Jul.	Aug.	Sept.	Oct.	Nov.	Dec.	Total
<b>2008</b>	8,344	8,623	9,238	10,350	9,415	9,550	8,301	6,405	10,251	10,082	8,683	7,829	<b>107,071</b>
<b>2009</b>	6,712	7,354	8,402	8,211	8,377	9,133	8,301	5,932	9,080	9,459	9,647	8,646	<b>99,254</b>
<b>2010</b>	7,503	10,000	10,441	6,435	8,102	9,983	8,662	6,575	9,088	9,336	9,089	7,258	<b>102,472</b>

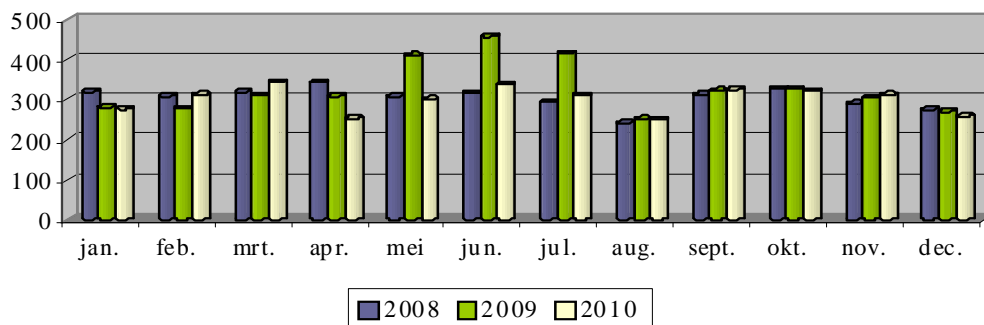
Passengers scheduled flights



#### Movements

	Jan.	Feb.	Mar.	Apr.	May	Jun.	Jul.	Aug.	Sept.	Oct.	Nov.	Dec.	Total
<b>2008</b>	319	308	319	343	307	316	293	241	312	326	289	275	<b>3,648</b>
<b>2009</b>	280	277	310	308	410	457	415	251	322	326	304	270	<b>3,930</b>
<b>2010</b>	276	312	344	252	300	338	310	250	325	321	311	258	<b>3,597</b>

Bewegingen lijnvluchten

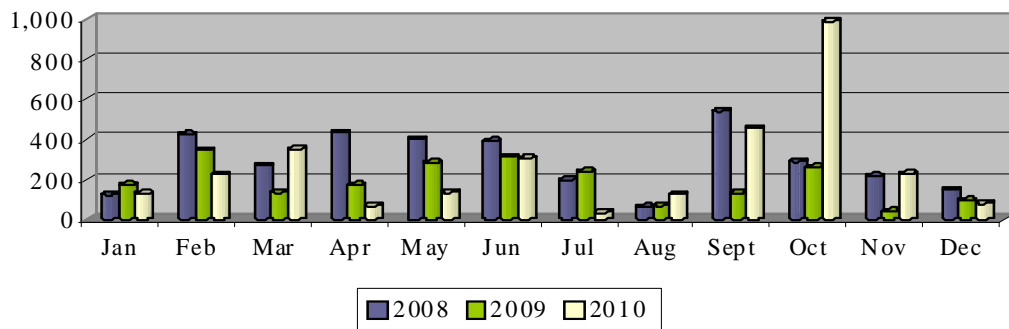


## Charter flights

### Passengers

	Jan.	Feb.	Mar.	Apr.	May	Jun.	Jul.	Aug.	Sept.	Oct.	Nov.	Dec.	Total
<b>2008</b>	122	423	266	432	400	392	196	62	541	288	215	146	<b>3,483</b>
<b>2009</b>	172	345	134	172	282	312	240	68	130	258	40	94	<b>2,247</b>
<b>2010</b>	128	224	350	66	134	304	34	123	456	990	229	80	<b>3,118</b>

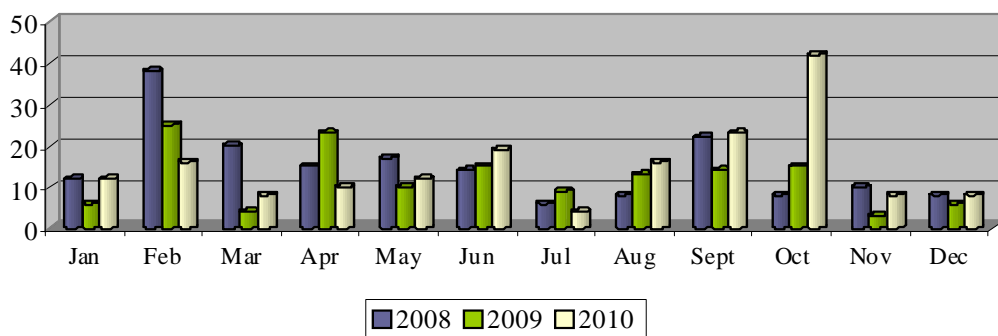
Passengers charter flights



### Movements

	Jan.	Feb.	Mar.	Apr.	May	Jun.	Jul.	Aug.	Sept.	Oct.	Nov.	Dec.	Total
<b>2008</b>	12	38	20	15	17	14	6	8	22	8	10	8	<b>178</b>
<b>2009</b>	6	25	4	23	10	15	9	13	14	15	3	6	<b>143</b>
<b>2010</b>	12	16	8	10	12	19	4	16	23	42	8	8	<b>178</b>

Movements charter flights

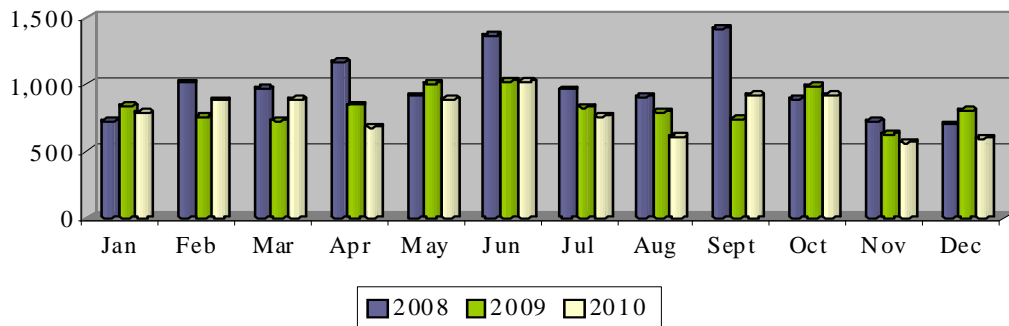


## Ad hoc flights + 3 ton

### Passengers

	Jan.	Feb.	Mar.	Apr.	May	Jun.	Jul.	Aug.	Sept.	Oct.	Nov.	Dec.	Total
<b>2008</b>	725	1,013	968	1,170	915	1,366	961	908	1,419	891	723	697	<b>11,756</b>
<b>2009</b>	838	756	728	846	1,008	1,025	828	794	739	985	627	804	<b>9,978</b>
<b>2010</b>	787	881	886	678	887	1,021	761	606	920	919	565	598	<b>9,509</b>

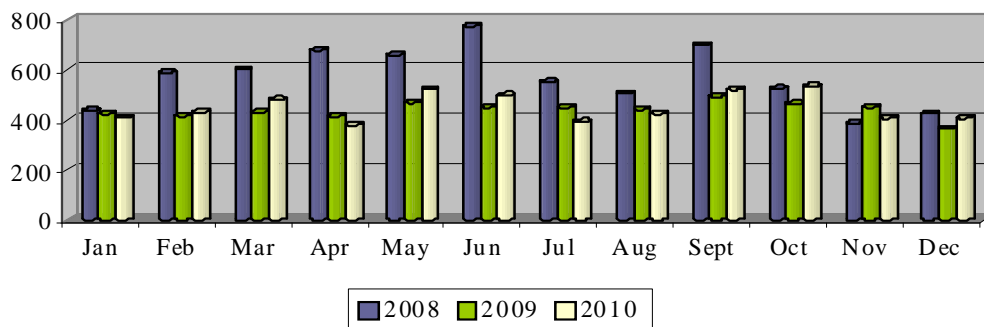
Passengers ad hoc flights + 3 ton



### Movements

	Jan.	Feb.	Mar.	Apr.	May	Jun.	Jul.	Aug.	Sept.	Oct.	Nov.	Dec.	Total
<b>2008</b>	437	588	602	680	659	775	553	506	698	525	386	425	<b>6,834</b>
<b>2009</b>	424	415	430	414	467	450	448	442	493	463	450	364	<b>5,260</b>
<b>2010</b>	409	431	480	378	522	498	392	424	521	534	407	406	<b>5,402</b>

Movements ad hoc flights + 3 ton

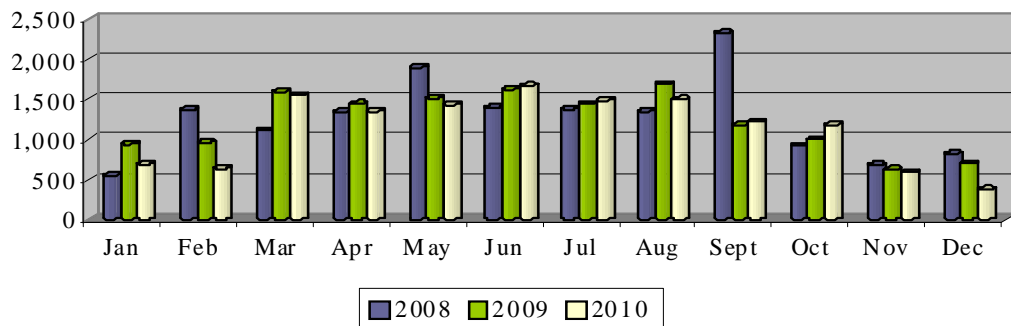


## Ad hoc flights – 3 ton

### Passengers

	Jan.	Feb.	Mar.	Apr.	May	Jun.	Jul.	Aug.	Sept.	Oct.	Nov.	Dec.	Total
<b>2008</b>	548	1,367	1,106	1,347	1,897	1,395	1,377	1,351	2,331	921	680	818	<b>15,138</b>
<b>2009</b>	939	961	1,596	1,445	1,511	1,623	1,439	1,690	1,174	999	624	695	<b>14,696</b>
<b>2010</b>	686	633	1,553	1,349	1,430	1,666	1,486	1,500	1,217	1,177	586	373	<b>13,656</b>

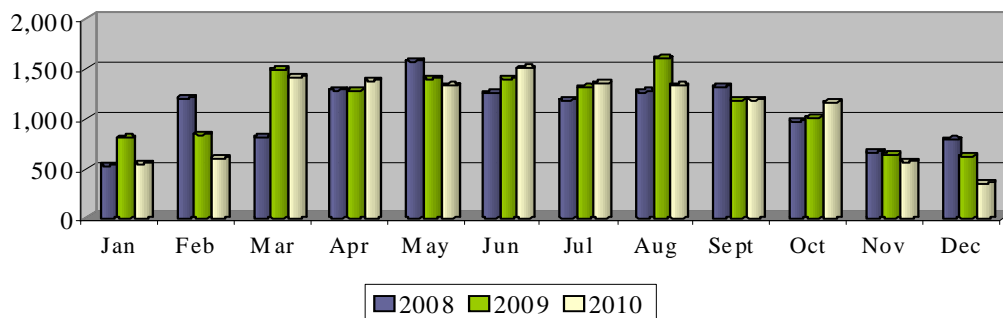
Passengers ad hoc flights - 3 ton



### Movements

	Jan.	Feb.	Mar.	Apr.	May	Jun.	Jul.	Aug.	Sept.	Oct.	Nov.	Dec.	Total
<b>2008</b>	529	1,206	814	1,287	1,575	1,255	1,187	1,268	1,318	975	665	784	<b>12,863</b>
<b>2009</b>	805	840	1,492	1,279	1,403	1,400	1,309	1,603	1,185	1,010	636	623	<b>13,585</b>
<b>2010</b>	548	602	1,417	1,382	1,328	1,505	1,352	1,329	1,190	1,162	569	353	<b>12,737</b>

Movements ad hoc flights - 3 ton

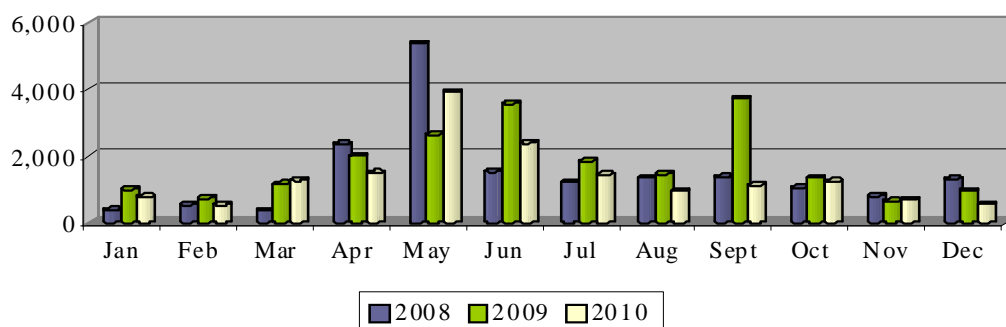


## Local flights

### Passengers

	Jan.	Feb.	Mar.	Apr.	May	Jun.	Jul.	Aug.	Sept.	Oct.	Nov.	Dec.	Total
2008	378	536	356	2,364	5,376	1,532	1,212	1,346	1,374	1,050	788	1,300	17,612
2009	988	728	1,158	1,998	2,628	3,566	1,840	1,458	3,714 <sup>2</sup>	1,354	638	948	21,018
2010	772	532	1,270	1,488	3,914	2,390	1,434	956	1,110	1,236	682	550	16,334

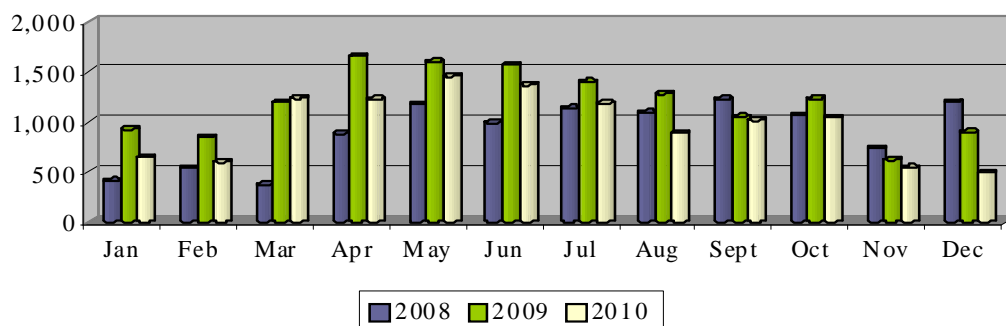
Passengers local flights



### Movements

	Jan.	Feb.	Mar.	Apr.	May	Jun.	Jul.	Aug.	Sept.	Oct.	Nov.	Dec.	Total
2008	410	534	370	880	1,171	990	1,132	1,090	1,224	1,068	732	1,198	10,799
2009	924	840	1,195	1,656	1,601	1,567	1,396	1,280	1,048	1,228	619	896	14,250
2010	643	596	1,236	1,224	1,455	1,368	1,182	890	1,017	1,045	538	491	11,685

Movements local flights



<sup>2</sup> On 29 September 2009 the 28<sup>th</sup> “Luchtvaartdag” took place whereby over 1,500 disabled children made their first flight. In total, about 50 flights were performed.

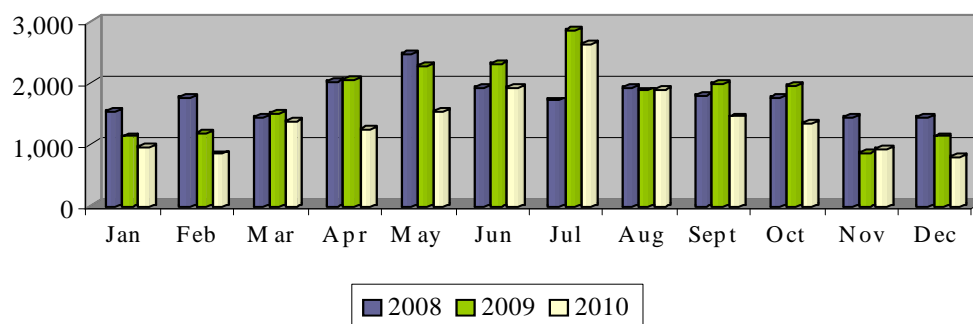


## Training flights

### Passengers

	Jan.	Feb.	Mar.	Apr.	May	Jun.	Jul.	Aug.	Sept.	Oct.	Nov.	Dec.	Total
<b>2008</b>	1,530	1,768	1,426	2,028	2,456	1,928	1,710	1,926	1,784	1,754	1,434	1,434	<b>21,178</b>
<b>2009</b>	1,130	1,186	1,504	2,050	2,284	2,300	2,846	1,870	1,986	1,938	858	1,130	<b>21,082</b>
<b>2010</b>	956	842	1,376	1,234	1,532	1,904	2,620	1,872	1,450	1,334	922	782	<b>16,824</b>

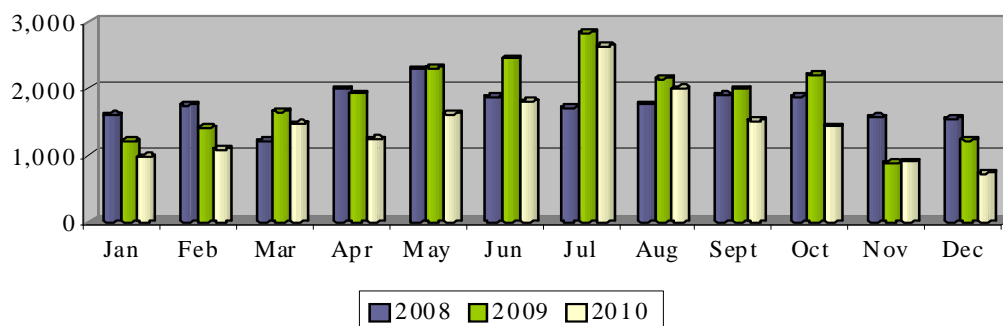
Passengers training flights



### Movements

	Jan.	Feb.	Mar.	Apr.	May	Jun.	Jul.	Aug.	Sept.	Oct.	Nov.	Dec.	Total
<b>2008</b>	1,603	1,752	1,210	1,997	2,291	1,877	1,712	1,764	1,902	1,882	1,570	1,550	<b>21,110</b>
<b>2009</b>	1,215	1,410	1,659	1,923	2,310	2,455	2,839	2,150	1,990	2,206	880	1,230	<b>22,267</b>
<b>2010</b>	974	1,090	1,473	1,237	1,617	1,807	2,635	1,998	1,519	1,434	904	732	<b>17,420</b>

Movements training flights



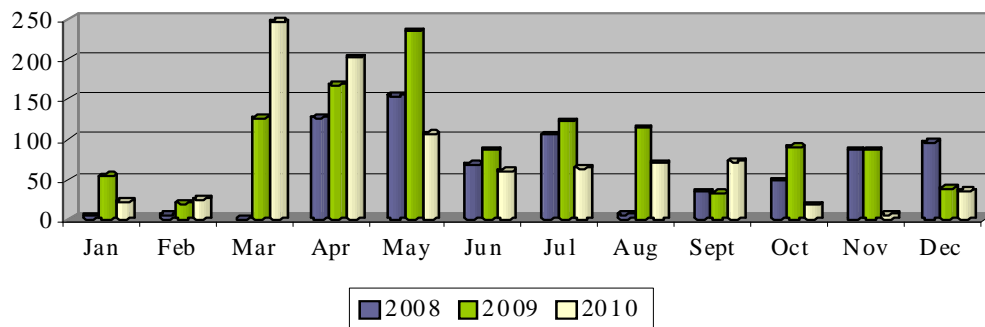
## Other flights

(= cargo flights, military flights, photo flights, diversions)

### Passengers

	Jan.	Feb.	Mar.	Apr.	May	Jun.	Jul.	Aug.	Sept.	Oct.	Nov.	Dec.	Total
<b>2008</b>	4	5	0	127 <sup>3</sup>	154	68	105	6	34	48	86	96	<b>733</b>
<b>2009</b>	54	20	126	168	235	86	122	114	32	90	86	38	<b>1,171</b>
<b>2010</b>	22	25	247	202	106	60	64	70	72	18	6	35	<b>927</b>

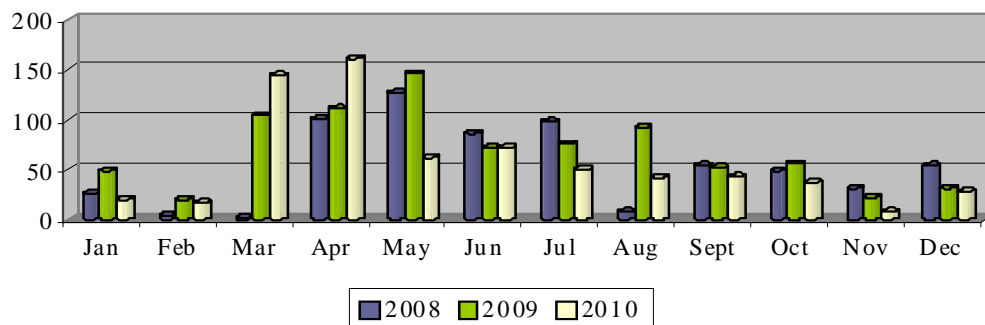
Passengers other flights



### Movements

	Jan.	Feb.	Mar.	Apr.	May	Jun.	Jul.	Aug.	Sept.	Oct.	Nov.	Dec.	Total
<b>2008</b>	26	4	2	101 <sup>3</sup>	127	86	98	8	54	49	31	54	<b>640</b>
<b>2009</b>	49	20	104	111	146	72	76	92	52	56	22	31	<b>831</b>
<b>2010</b>	20	17	144	161	62	72	50	42	43	37	8	28	<b>684</b>

Movements other flights



<sup>3</sup> From April 2008 photo flights and diversions are mentioned in the monthly statistics as a separate category; previously, they were included in the ad-hoc flights.



# Glossary

## 1. SCHEDULED FLIGHTS

Regular commercial flights.

## 2. CHARTER FLIGHTS

Flights and accommodation, or flights only, reserved to the members of an association travelling group.

## 3. AD HOC FLIGHTS (–3 TON AND +3 TON)

Transfer by aircraft for business purposes, or a flight performed by an aircraft with a maximum seat capacity of 7 passengers, for which the planned destination includes one or more landings outside the airport of departure.

## 4. LOCAL FLIGHTS

- 4.1. Transfer by aircraft for which the airport of departure is the planned destination, so that the flight includes no landings outside the airport of departure.
- 4.2. Maiden flights.

## 5. TRAINING FLIGHTS

- 5.1. Flight performed by a student-pilot to become a license.
- 5.2. Flight performed
  - for purpose of the issue, renewal or restitution of a certificate of airworthiness;
  - to control ground installations.
- 5.3. Flight performed by an aircraft for crew training.

## **6. OTHER FLIGHTS**

- 6.1. Diversions.
- 6.2. Delivery flight: flight to deliver an aircraft.
- 6.3. Empty flight to bring an aircraft in position.
- 6.4. Military flights.
- 6.5. Flights for exclusive transport of heads of state or members of government in the exercise of their duty.

**Composition**

Department Mobility and Public Works  
Antwerp Airport  
Katleen Pitteviels

**Responsible publisher**

Ir. Fernand Desmyter  
Secretaris-generaal

**Catalogue number**

D/2011/3241/034

**Edition** January 2011

