



departement
**Mobiliteit en
Openbare Werken**

STATISTICAL YEARBOOK 2009



Vlaamse overheid



CONTENTS

<u>PREFACE</u>	3
<u>EVOLUTION 1999-2009</u>	5
PASSENGERS.....	5
MOVEMENTS	5
CARGO (IN TONS)	5
<u>PER TYPE OF TRAFFIC 2007-2009</u>	6
PASSENGERS.....	6
MOVEMENTS	6
CARGO (IN TONS)	6
<u>EVOLUTION PER MONTH 1999-2009</u>	7
PASSENGERS.....	7
MOVEMENTS	8
CARGO (IN TONS)	9
<u>MONTHLY PER TYPE OF TRAFFIC 2007-2009</u>	10
SCHEDULED FLIGHTS	10
CHARTER FLIGHTS.....	11
AD HOC FLIGHTS + 3 TON	12
AD HOC FLIGHTS – 3 TON.....	13
LOCAL FLIGHTS	14
TRAINING FLIGHTS.....	15
OTHER FLIGHTS	16
<u>GLOSSARY</u>	18

Preface

Antwerp Airport is operated as a Separate Management Service by the Flemish government, Department of Mobility and Public Works. This Statistical Yearbook 2009 contains detailed information about passenger numbers, the number of movements and freight at Antwerp Airport.

In 2009 169,446 passengers travelled via Antwerp Airport (-4.3%). This is a minor decline compared to other airports. In addition, passenger figures are on the rise again since the fourth quarter. While passenger numbers fell by almost 9% during the first six months of the year, signs of recovery are showing during the second half of the year with increasing passenger numbers since October 2009.

Passenger figures at the Antwerp-London City route in the last 3 months of 2009 were at the same level as in the last 3 months of 2008. The route to Manchester experienced an increase in passenger numbers of over 17% from October to December 2009. During the last quarter, also business flights recovered, with an increase in passenger figures of 4.5% compared to the year 2008.

Additional copies of this Statistical Yearbook 2009 can be ordered from:

Vlaamse Overheid
Departement Mobiliteit en Openbare Werken
Luchthaven Antwerpen
Luchthavenlei z/n
2100 Antwerpen

Tel: 03-285 65 11
Fax: 03-285 65 01

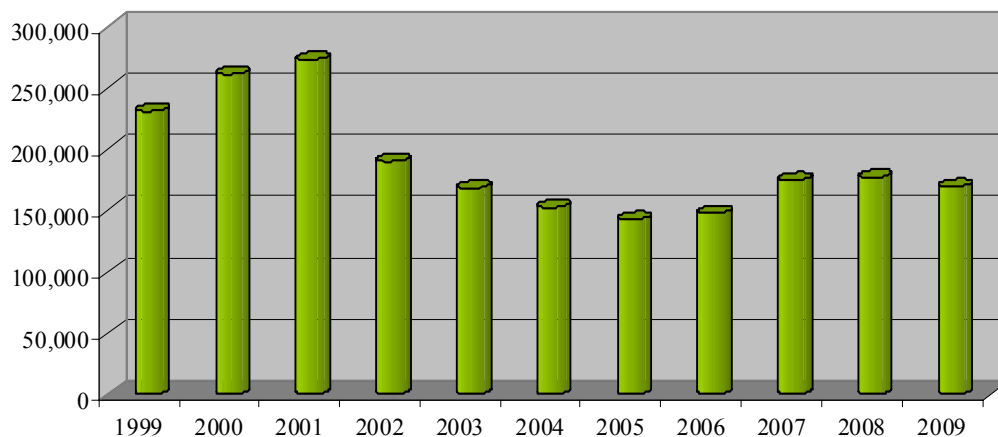
Statistical data may be reproduced provided the source is fully acknowledged.

January 2010
Dutch version available

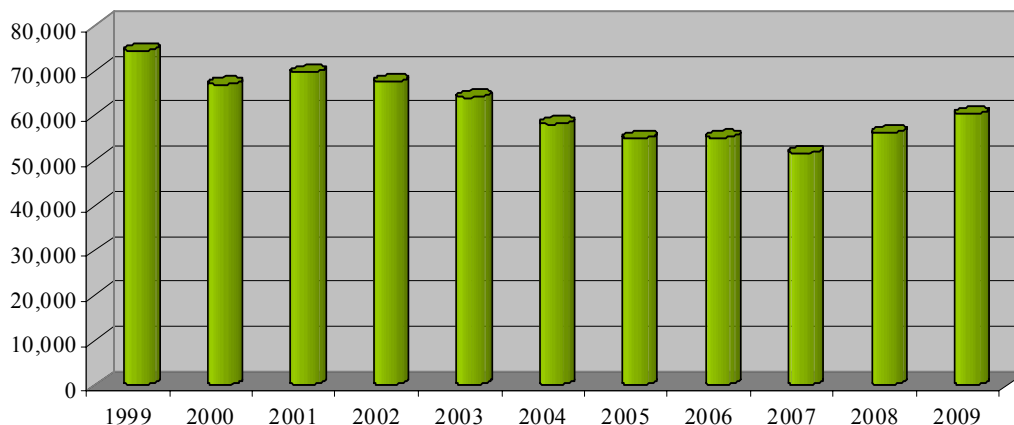
Evolution 1999-2009

	1999	2000	2001	2002	2003	2004	2005	2006	2007	2008	2009
Passengers	231,113	261,576	273,208	190,362	168,283	152,682	142,737	147,849	174,858	176,971	169,446
Movements	74,370	66,909	69,515	67,435	64,000	58,132	54,871	55,023	51,589	56,072	60,266
Cargo (in tons)	7,281	7,997	6,684	5,240	4,903	4,281	4,664	6,825	5,312	5,562	4,592

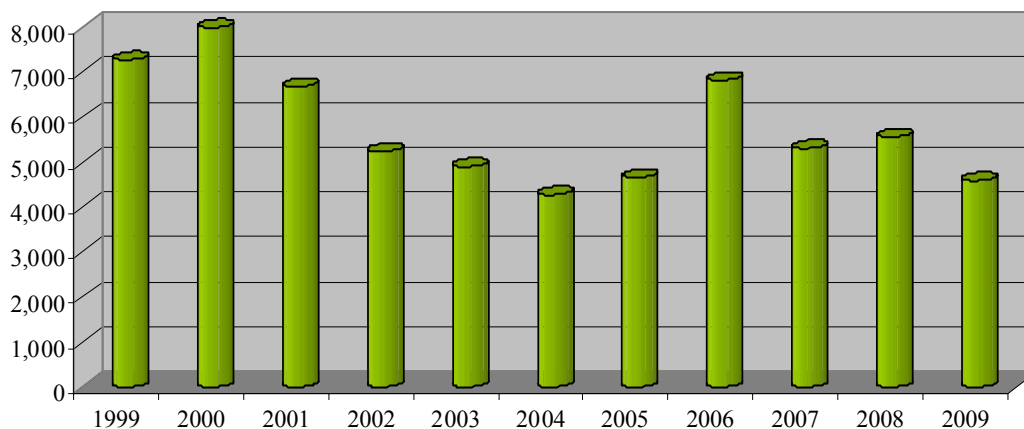
Passengers



Movements



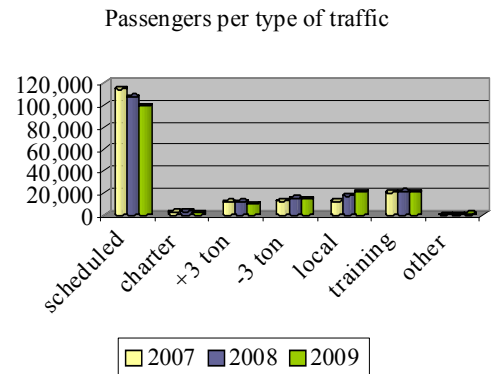
Cargo (in tons)



Per type of traffic 2007-2009

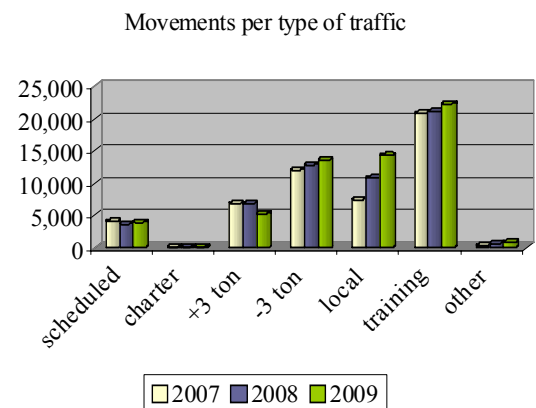
Passengers

	2007	2008	2009
Scheduled flights	114,427	107,071	99,254
Charter flights	2,718	3,483	2,247
Ad hoc +3 ton	11,717	11,756	9,978
Ad hoc -3 ton	12,678	15,138	14,696
Local flights	12,365	17,612	21,018
Training flights	20,627	21,178	21,082
Other flights	326	733	1,171
Total	174,858	176,971	169,446



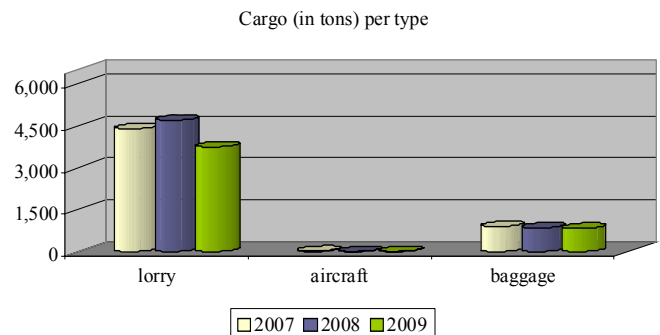
Movements

	2007	2008	2009
Scheduled flights	4,077	3,648	3,930
Charter flights	140	178	143
Ad hoc +3 ton	6,821	6,834	5,260
Ad hoc -3 ton	12,010	12,863	13,585
Local flights	7,426	10,799	14,250
Training flights	20,813	21,110	22,267
Other flights	302	640	831
Total	51,589	56,072	60,266



Cargo (in tons)

	2007	2008	2009
Lorry ¹	4,396	4,704	3,752
Aircraft	20	7	10
Baggage	896	851	830
Total	5,312	5,562	4,592



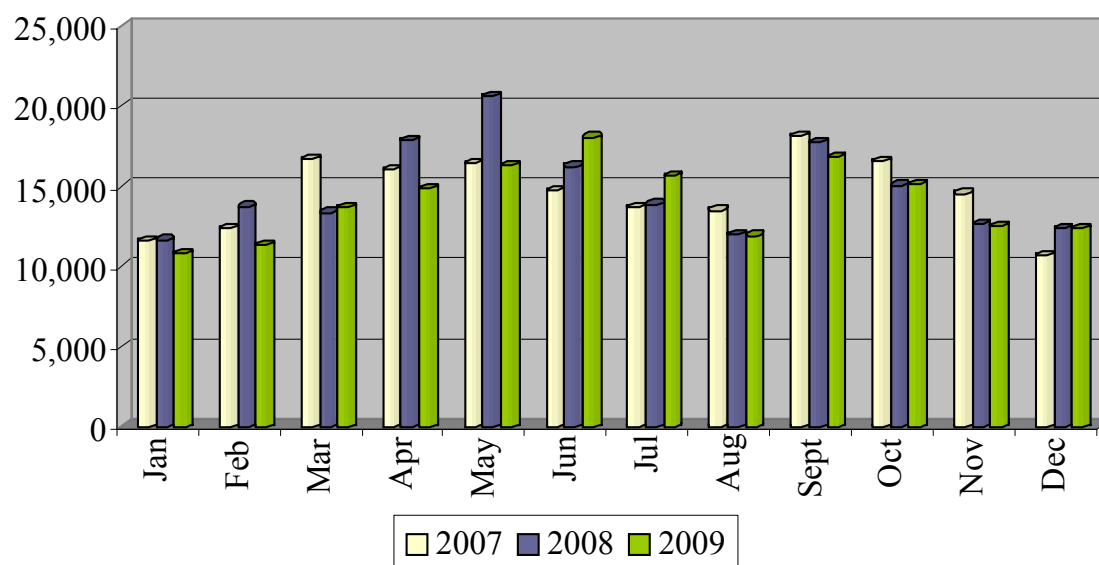
¹ Road freight by air waybill.

Evolution per month 1999-2009

Passengers

	1999	2000	2001	2002	2003	2004	2005	2006	2007	2008	2009
January	14,458	17,848	20,203	15,169	13,190	10,045	10,057	10,066	11,572	11,651	10,833
February	13,594	19,592	20,450	15,846	13,196	11,549	10,900	10,269	12,380	13,735	11,350
March	17,814	21,092	23,083	20,927	15,826	13,767	11,771	14,279	16,692	13,360	13,648
April	20,235	20,899	21,738	18,273	14,733	12,434	11,992	13,870	16,052	17,818	14,890
May	21,811	25,890	26,766	22,538	16,307	13,116	11,933	13,695	16,459	20,613	16,325
June	21,439	24,965	25,280	15,596	15,703	14,211	14,504	14,420	14,761	16,231	18,045
July	21,393	22,225	22,574	14,034	14,589	12,266	11,727	11,424	13,654	13,862	15,616
August	19,831	20,977	22,729	11,366	12,043	12,602	11,477	9,704	13,480	12,004	11,926
September	20,468	22,897	21,378	14,861	15,057	15,714	13,578	12,464	18,068	17,734	16,855
October	21,080	22,785	22,902	15,149	14,053	13,742	11,555	14,301	16,560	15,034	15,083
November	21,600	22,769	24,989	13,577	12,698	12,745	11,846	13,464	14,530	12,609	12,520
December	17,390	19,637	21,116	13,026	10,888	10,491	11,397	9,893	10,650	12,320	12,355
Total	231,113	261,576	273,208	190,362	168,283	152,682	142,737	147,849	174,858	176,971	169,446

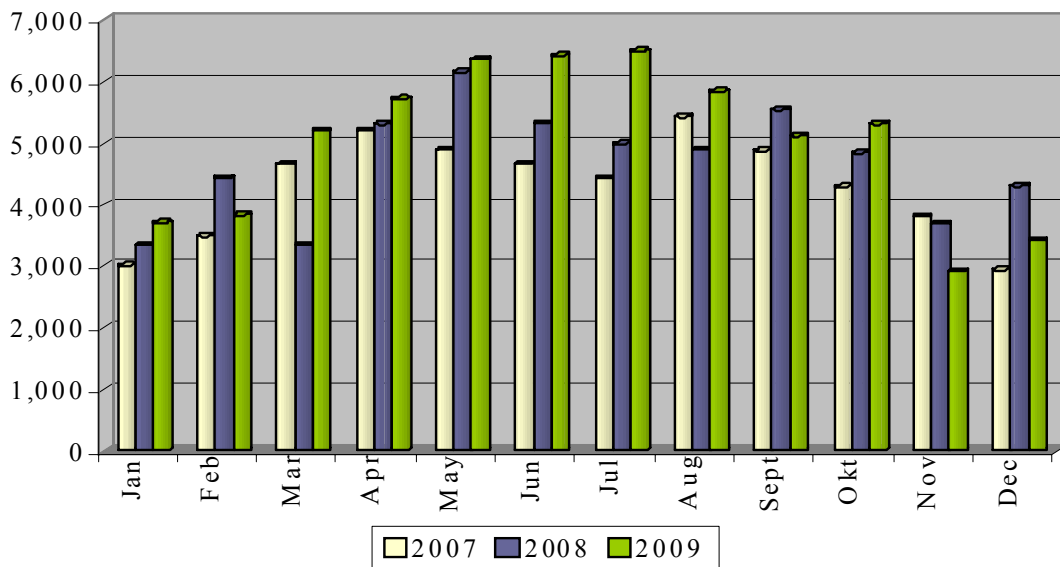
Passengers per month



Movements

	1999	2000	2001	2002	2003	2004	2005	2006	2007	2008	2009
January	4,594	4,902	5,746	4,249	3,871	3,758	3,972	3,752	3,006	3,336	3,703
February	3,986	6,106	5,263	4,098	5,107	3,816	3,494	3,262	3,482	4,430	3,827
March	6,512	5,444	4,857	6,899	6,232	5,640	4,570	5,532	4,646	3,337	5,194
April	7,216	6,207	6,218	6,906	4,888	5,384	4,634	6,078	5,190	5,302	5,714
May	7,868	6,142	7,194	7,196	6,534	5,796	4,714	5,364	4,880	6,147	6,347
June	7,814	6,741	6,788	6,052	5,996	5,330	5,200	5,922	4,657	5,314	6,416
July	8,047	6,136	6,424	6,083	6,107	5,306	5,029	5,158	4,418	4,981	6,492
August	6,852	6,296	6,804	5,500	5,782	5,978	6,218	3,980	5,419	4,885	5,831
September	6,128	5,336	5,408	6,176	5,715	5,462	5,178	5,038	4,870	5,530	5,104
October	5,838	4,849	6,156	5,086	5,030	5,064	4,530	4,586	4,281	4,833	5,304
November	5,982	5,416	4,685	4,994	4,648	3,668	3,622	3,748	3,805	3,683	2,914
December	3,533	3,334	3,972	4,196	4,090	2,930	3,710	2,603	2,935	4,294	3,420
Total	74,370	66,909	69,515	67,435	64,000	58,132	54,871	55,023	51,589	56,072	60,266

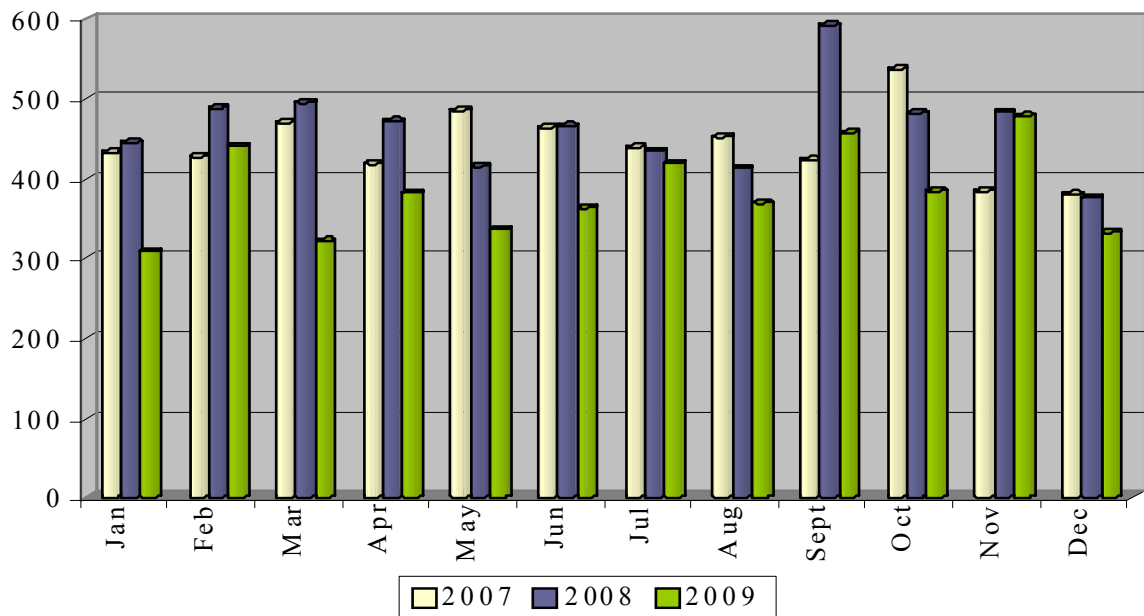
Movements per month



Cargo (in tons)

	1999	2000	2001	2002	2003	2004	2005	2006	2007	2008	2009
January	531	681	626	517	471	263	372	448	433	445	309
February	541	526	630	540	413	334	409	593	427	488	441
March	454	561	596	454	307	334	471	535	470	495	322
April	546	573	500	292	308	416	382	449	418	472	382
May	540	828	600	445	389	309	417	742	485	415	336
June	503	820	559	483	377	334	405	631	464	466	363
July	737	584	634	545	521	350	410	513	439	435	419
August	622	742	645	355	420	337	357	526	452	413	369
September	621	709	423	370	413	277	360	677	423	592	457
October	633	649	464	372	384	439	329	631	537	482	384
November	898	619	502	422	466	433	359	547	384	483	478
December	655	705	505	445	434	455	393	533	380	376	332
Total	7,281	7,997	6,684	5,240	4,903	4,281	4,664	6,825	5,312	5,562	4,592

Cargo (in tons) per month



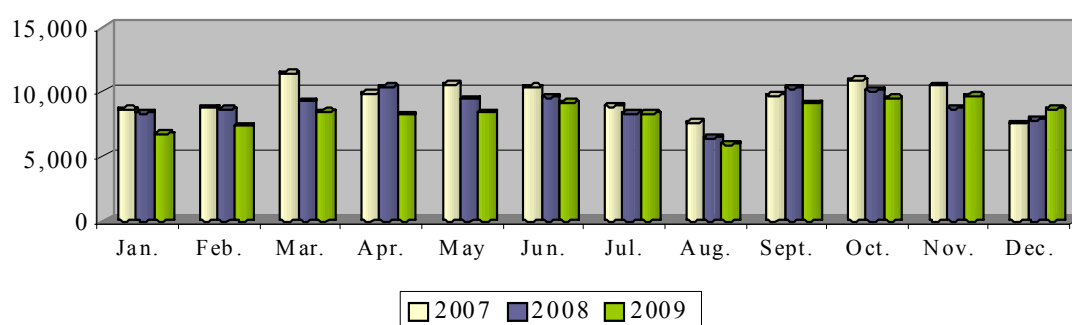
Monthly per type of traffic 2007-2009

Scheduled flights

Passengers

	Jan.	Feb.	Mar.	Apr.	May	Jun.	Jul.	Aug.	Sept.	Oct.	Nov.	Dec.	Total
2007	8,595	8,738	11,380	9,831	10,560	10,336	8,872	7,598	9,713	10,858	10,430	7,516	114,427
2008	8,344	8,623	9,238	10,350	9,415	9,550	8,301	6,405	10,251	10,082	8,683	7,829	107,071
2009	6,712	7,354	8,402	8,211	8,377	9,133	8,301	5,932	9,080	9,459	9,647	8,646	99,254

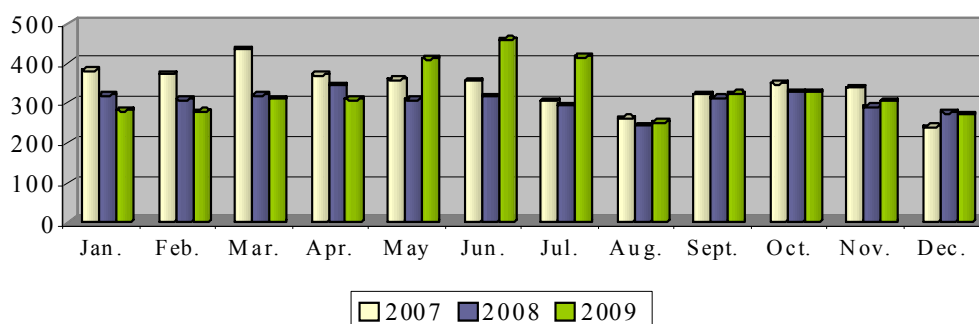
Passengers scheduled flights



Movements

	Jan.	Feb.	Mar.	Apr.	May	Jun.	Jul.	Aug.	Sept.	Oct.	Nov.	Dec.	Total
2007	380	372	434	370	358	354	304	260	321	348	337	239	4,077
2008	319	308	319	343	307	316	293	241	312	326	289	275	3,648
2009	280	277	310	308	410	457	415	251	322	326	304	270	3,930

Movements scheduled flights

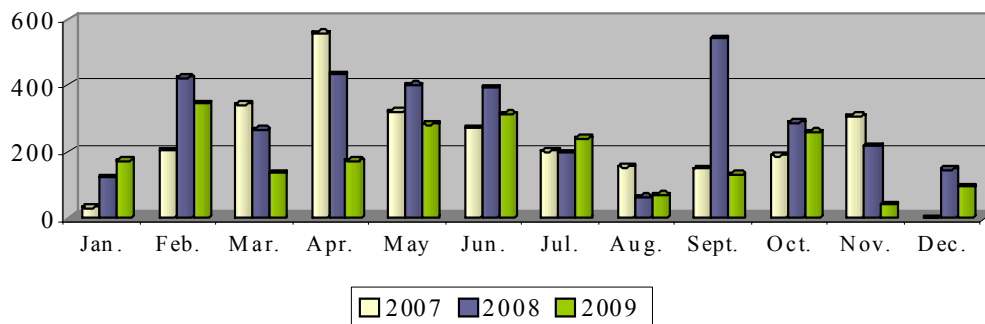


Charter flights

Passengers

	Jan.	Feb.	Mar.	Apr.	May	Jun.	Jul.	Aug.	Sept.	Oct.	Nov.	Dec.	Total
2007	31	202	342	556	320	270	201	153	148	188	307	0	2,718
2008	122	423	266	432	400	392	196	62	541	288	215	146	3,483
2009	172	345	134	172	282	312	240	68	130	258	40	94	2,247

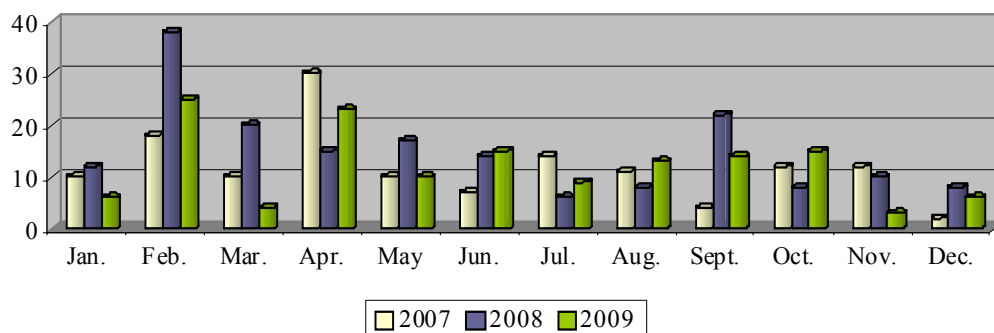
Passengers charter flights



Movements

	Jan.	Feb.	Mar.	Apr.	May	Jun.	Jul.	Aug.	Sept.	Oct.	Nov.	Dec.	Total
2007	10	18	10	30	10	7	14	11	4	12	12	2	140
2008	12	38	20	15	17	14	6	8	22	8	10	8	178
2009	6	25	4	23	10	15	9	13	14	15	3	6	143

Movements charter flights

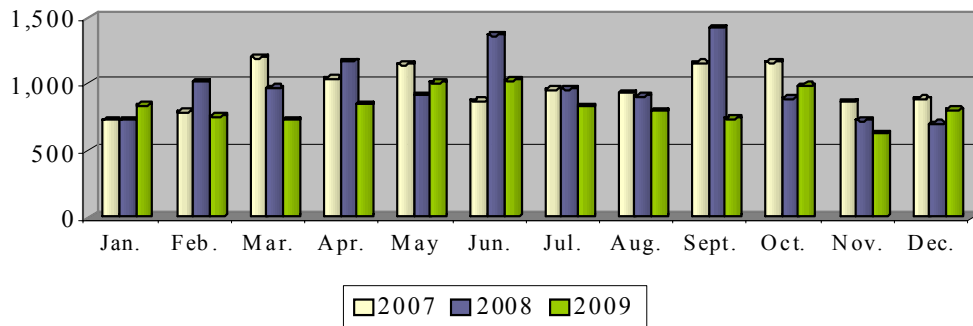


Ad hoc flights + 3 ton

Passengers

	Jan.	Feb.	Mar.	Apr.	May	Jun.	Jul.	Aug.	Sept.	Oct.	Nov.	Dec.	Total
2007	725	788	1,196	1,037	1,147	869	957	930	1,154	1,164	863	887	11,717
2008	725	1,013	968	1,170	915	1,366	961	908	1,419	891	723	697	11,756
2009	838	756	728	846	1,008	1,025	828	794	739	985	627	804	9,978

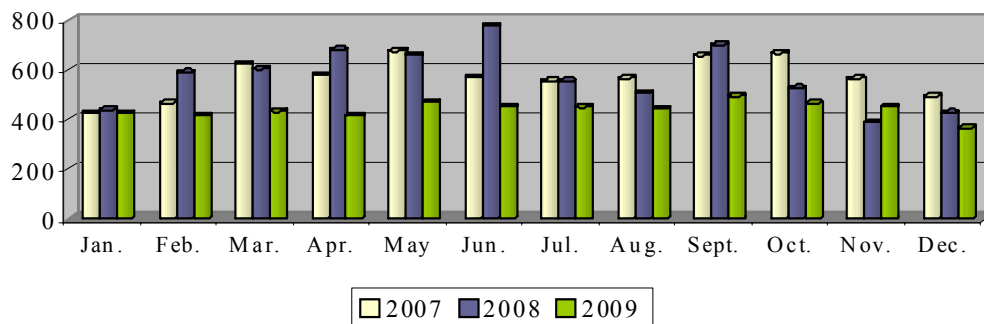
Passengers ad hoc flights + 3 ton



Movements

	Jan.	Feb.	Mar.	Apr.	May	Jun.	Jul.	Aug.	Sept.	Oct.	Nov.	Dec.	Total
2007	424	464	622	578	674	568	553	564	656	665	562	491	6,821
2008	437	588	602	680	659	775	553	506	698	525	386	425	6,834
2009	424	415	430	414	467	450	448	442	493	463	450	364	5,260

Movements ad hoc flights + 3 ton

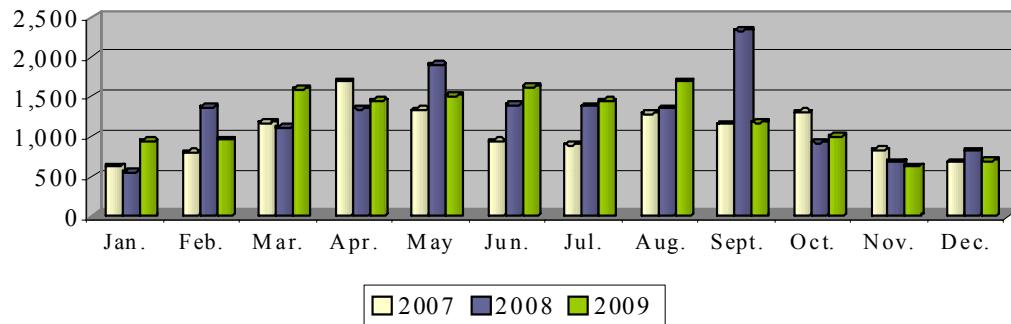


Ad hoc flights – 3 ton

Passengers

	Jan.	Feb.	Mar.	Apr.	May	Jun.	Jul.	Aug.	Sept.	Oct.	Nov.	Dec.	Total
2007	623	793	1,170	1,692	1,330	938	894	1,287	1,152	1,302	824	673	12,678
2008	548	1,367	1,106	1,347	1,897	1,395	1,377	1,351	2,331	921	680	818	15,138
2009	939	961	1,596	1,445	1,511	1,623	1,439	1,690	1,174	999	624	695	14,696

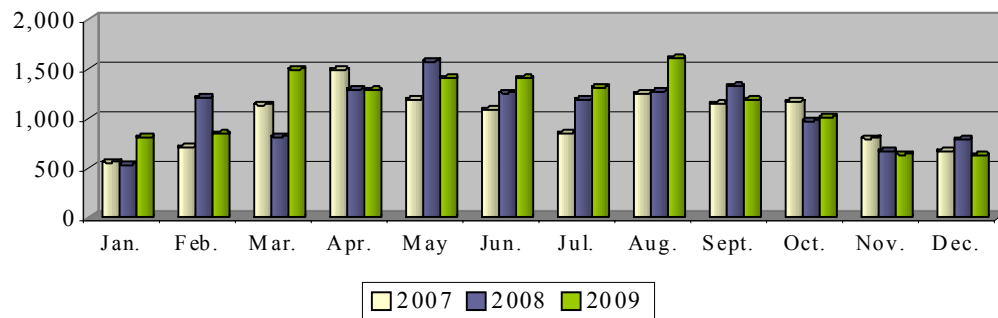
Passengers ad hoc flights - 3 ton



Movements

	Jan.	Feb.	Mar.	Apr.	May	Jun.	Jul.	Aug.	Sept.	Oct.	Nov.	Dec.	Total
2007	554	704	1,136	1,484	1,190	1,082	846	1,246	1,141	1,166	796	665	12,010
2008	529	1,206	814	1,287	1,575	1,255	1,187	1,268	1,318	975	665	784	12,863
2009	805	840	1,492	1,279	1,403	1,400	1,309	1,603	1,185	1,010	636	623	13,585

Movements ad hoc flights - 3 ton

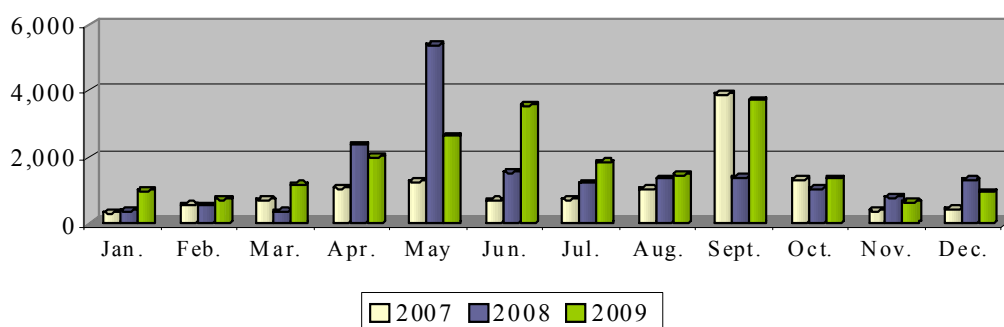


Local flights

Passengers

	Jan.	Feb.	Mar.	Apr.	May	Jun.	Jul.	Aug.	Sept.	Oct.	Nov.	Dec.	Total
2007	324	550	702	1,062	1,258	683	722	1,038	3,894 ²	1,316	388	428	12,365
2008	378	536	356	2,364	5,376	1,532	1,212	1,346	1,374	1,050	788	1,300	17,612
2009	988	728	1,158	1,998	2,628	3,566	1,840	1,458	3,714 ³	1,354	638	948	21,018

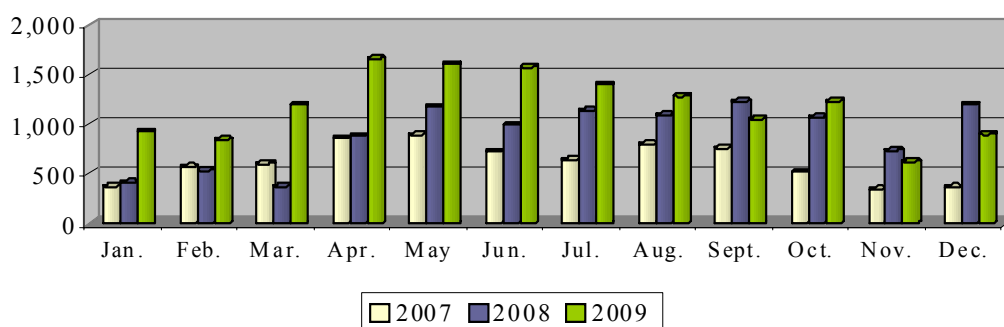
Passengers local flights



Movements

	Jan.	Feb.	Mar.	Apr.	May	Jun.	Jul.	Aug.	Sept.	Oct.	Nov.	Dec.	Total
2007	370	568	600	856	890	720	638	798	758	518	344	366	7,426
2008	410	534	370	880	1,171	990	1,132	1,090	1,224	1,068	732	1,198	10,799
2009	924	840	1,195	1,656	1,601	1,567	1,396	1,280	1,048	1,228	619	896	14,250

Movements local flights



² On 18 September 2007 the 27th "Luchtvaartdag" took place whereby over 1,400 disabled children made their first flight. In total, about 40 flights were performed.

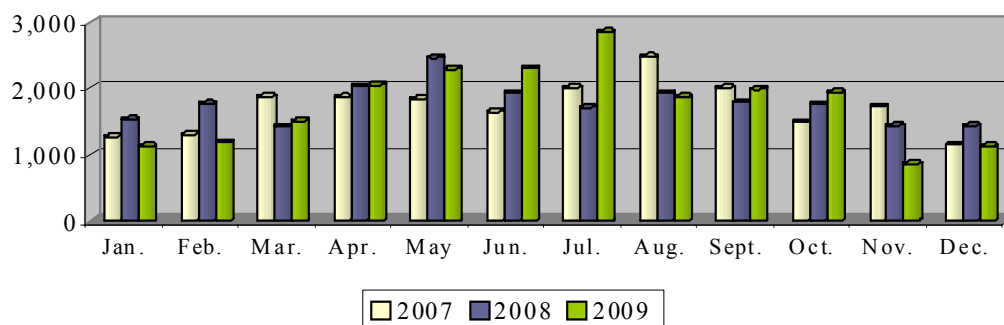
³ On 29 September 2009 the 28th "Luchtvaartdag" took place whereby over 1,500 disabled children made their first flight. In total, about 50 flights were performed.

Training flights

Passengers

	Jan.	Feb.	Mar.	Apr.	May	Jun.	Jul.	Aug.	Sept.	Oct.	Nov.	Dec.	Total
2007	1,266	1,302	1,872	1,868	1,838	1,642	2,004	2,474	2,007	1,490	1,718	1,146	20,627
2008	1,530	1,768	1,426	2,028	2,456	1,928	1,710	1,926	1,784	1,754	1,434	1,434	21,178
2009	1,130	1,186	1,504	2,050	2,284	2,300	2,846	1,870	1,986	1,938	858	1,130	21,082

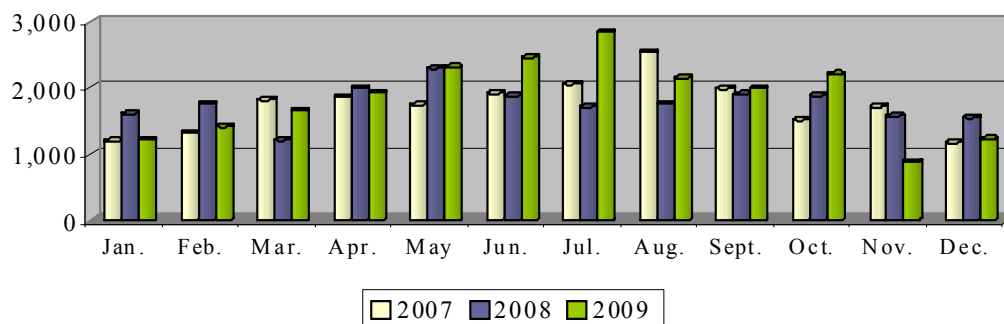
Passengers training flights



Movements

	Jan.	Feb.	Mar.	Apr.	May	Jun.	Jul.	Aug.	Sept.	Oct.	Nov.	Dec.	Total
2007	1,196	1,314	1,818	1,860	1,736	1,914	2,053	2,538	1,986	1,516	1,712	1,170	20,813
2008	1,603	1,752	1,210	1,997	2,291	1,877	1,712	1,764	1,902	1,882	1,570	1,550	21,110
2009	1,215	1,410	1,659	1,923	2,310	2,455	2,839	2,150	1,990	2,206	880	1,230	22,267

Movements training flights



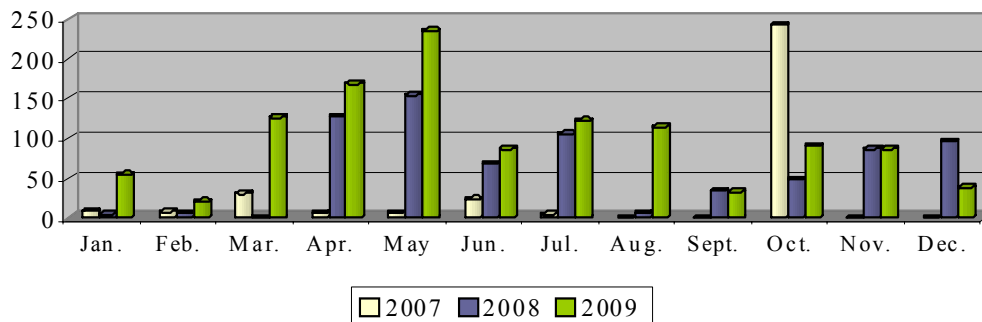
Other flights

(= cargo flights, military flights, photo flights, diversions)

Passengers

	Jan.	Feb.	Mar.	Apr.	May	Jun.	Jul.	Aug.	Sept.	Oct.	Nov.	Dec.	Total
2007	8	7	30	6	6	23	4	0	0	242 ⁴	0	0	326
2008	4	5	0	127 ⁵	154	68	105	6	34	48	86	96	733
2009	54	20	126	168	235	86	122	114	32	90	86	38	1,171

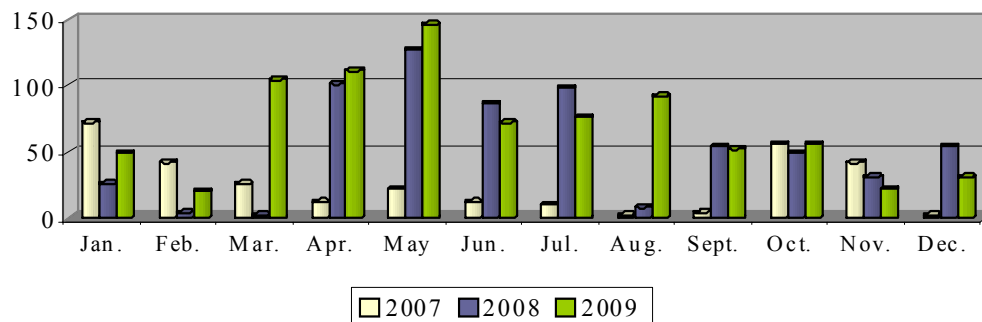
Passengers other flights



Movements

	Jan.	Feb.	Mar.	Apr.	May	Jun.	Jul.	Aug.	Sept.	Oct.	Nov.	Dec.	Total
2007	72	42	26	12	22	12	10	2	4	56	42	2	302
2008	26	4	2	101 ⁴	127	86	98	8	54	49	31	54	640
2009	49	20	104	111	146	72	76	92	52	56	22	31	831

Movements other flights



⁴ On 8 October 2007 a 4-day army exercise started with the landing of 8 C-130's at Antwerp Airport. Troops and vehicles were disembarked for the remainder of the exercise in the Antwerp region.

⁵ From April 2008 photo flights and diversions are mentioned in the monthly statistics as a separate category; previously, they were included in the ad-hoc flights.

Glossary

1. SCHEDULED FLIGHTS

Regular commercial flights.

2. CHARTER FLIGHTS

Flights and accommodation, or flights only, reserved to the members of an association traveling group.

3. AD HOC FLIGHTS (–3 TON AND +3 TON)

Transfer by aircraft for business purposes, or a flight performed by an aircraft with a maximum seat capacity of 7 passengers, for which the planned destination includes one or more landings outside the airport of departure.

4. LOCAL FLIGHTS

- 4.1. Transfer by aircraft for which the airport of departure is the planned destination, so that the flight includes no landings outside the airport of departure.
- 4.2. Maiden flights.

5. TRAINING FLIGHTS

- 5.1. Flight performed by a student-pilot to become a license.
- 5.2. Flight performed
 - for purpose of the issue, renewal or restitution of a certificate of airworthiness;
 - to control ground installations.
- 5.3. Flight performed by an aircraft for crew training.

6. OTHER FLIGHTS

- 6.1. Diversions.
- 6.2. Delivery flight: flight to deliver an aircraft.
- 6.3. Empty flight to bring an aircraft in position.
- 6.4. Military flights.
- 6.5. Flights for exclusive transport of heads of state or members of government in the exercise of their duty.

Vlaamse overheid



Composition

Department Mobility and Public Works
Antwerp Airport
Katleen Pitteviels

Responsible publisher

Ir. Fernand Desmyter
Secretaris-generaal

Printed by

Agency for Facility Management
Digitale Drukkerij

Catalogue number

D/2010/3241/035

Edition January 2010

