



## STATISTICAL YEARBOOK 2008



Flemish Government

Department Mobility and Public Works

Antwerp Airport



## CONTENTS

<b><u>PREFACE .....</u></b>	<b><u>3</u></b>
<b><u>EVOLUTION 1998-2008 .....</u></b>	<b><u>5</u></b>
PASSENGERS .....	5
MOVEMENTS .....	5
CARGO (IN TONS) .....	5
<b><u>PER TYPE OF TRAFFIC 2006-2008.....</u></b>	<b><u>6</u></b>
PASSENGERS .....	6
MOVEMENTS .....	6
CARGO (IN TONS) .....	7
<b><u>EVOLUTION PER MONTH 1998-2008.....</u></b>	<b><u>8</u></b>
PASSENGERS .....	8
MOVEMENTS .....	9
CARGO (IN TONS) .....	10
<b><u>MONTHLY PER TYPE OF TRAFFIC 2006-2008.....</u></b>	<b><u>11</u></b>
SCHEDULED FLIGHTS.....	11
CHARTER FLIGHTS.....	12
AD HOC FLIGHTS + 3 TON .....	13
AD HOC FLIGHTS – 3 TON.....	14
LOCAL FLIGHTS .....	15
TRAINING FLIGHTS .....	16
OTHER FLIGHTS .....	17
<b><u>GLOSSARY .....</u></b>	<b><u>18</u></b>

(blanco)

## Preface

Antwerp Airport is operated as a Separate Management Service by the Flemish government, Department of Mobility and Public Works. This Statistical Yearbook 2008 contains detailed information about passenger numbers, the number of movements and freight at Antwerp Airport.

Following several years of falling figures, this trend was broken in 2006 where the number of passengers grew by 3.6% to 147,849. The year 2007 was closed with an overall passenger number of 174,858, which means that growth continued with an increase of over 18% compared to the previous year. In 2008, 176,971 passengers were recorded, which is an increase by 1.2%. The number of flight movements in 2008 rose by 8.7% to 56,072.

Over 107,000 passengers used the scheduled flights to London City and Manchester which are provided by VLM Airlines. This is a decrease by 6.4% compared to 2007. Also, the growth of business aviation in the first half of the year (ad hoc flights + 3 tons), showing a 7% rise in passenger numbers and an increase of more than 12% in flight movements, was completely wiped out in the autumn as a result of the economic and financial crisis.

Additional copies of this Statistical Yearbook 2008 can be ordered from:

Vlaamse Overheid  
Departement Mobiliteit en Openbare Werken  
**Luchthaven Antwerpen**  
Luchthavenlei z/n  
2100 Antwerpen

Tel: 03-285 65 11  
Fax: 03-285 65 01

Statistical data may be reproduced provided the source is fully acknowledged.

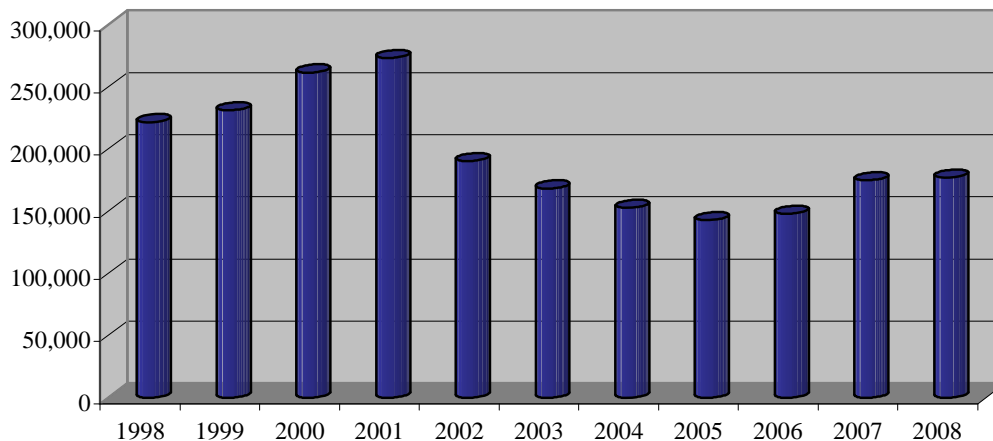
January 2009  
Dutch version available

(blanco)

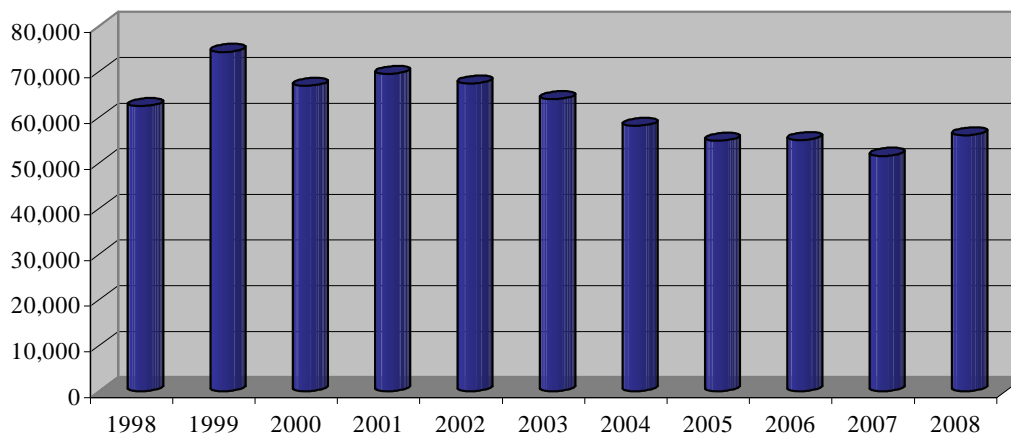
## Evolution 1998-2008

	1998	1999	2000	2001	2002	2003	2004	2005	2006	2007	2008
<b>Passengers</b>	221,523	231,113	261,576	273,208	190,362	168,283	152,682	142,737	147,849	174,858	<b>176,971</b>
<b>Movements</b>	62,462	74,370	66,909	69,515	67,435	64,000	58,132	54,871	55,023	51,589	<b>56,072</b>
<b>Cargo (in tons)</b>	6,860	7,281	7,997	6,684	5,240	4,903	4,281	4,664	6,825	5,312	<b>5,562</b>

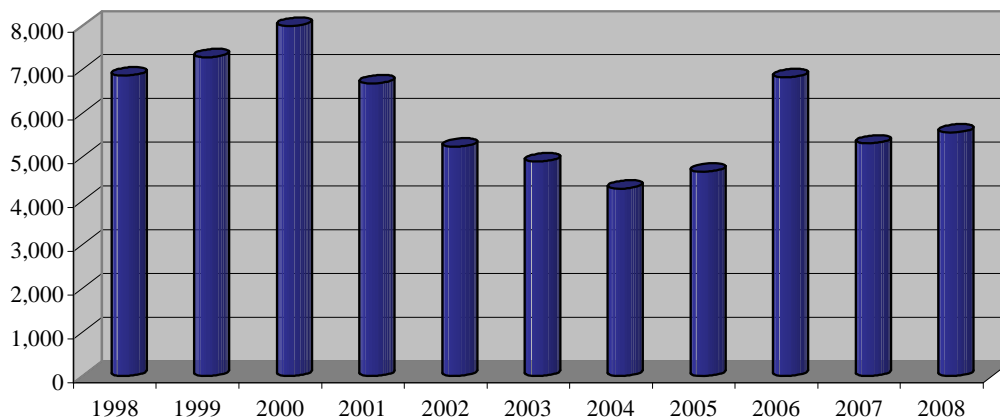
### Passengers



### Movements



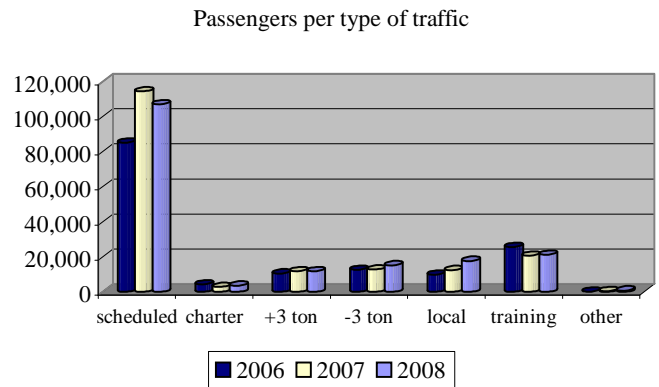
### Cargo (in tons)



## Per type of traffic 2006-2008

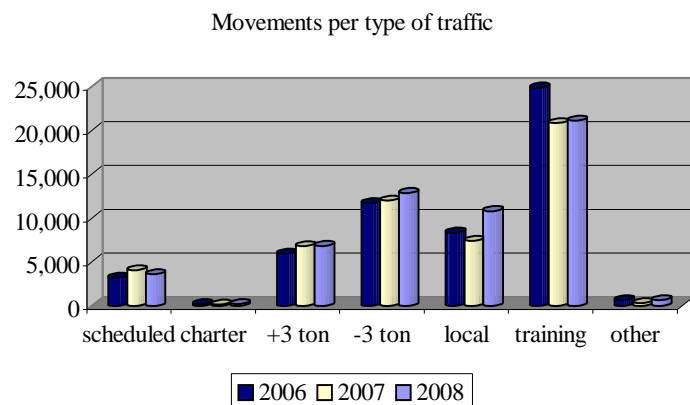
### Passengers

	2006	2007	2008
Scheduled flights	85,099	114,427	107,071
Charter flights	4,242	2,718	3,483
Ad hoc +3 ton	10,412	11,717	11,756
Ad hoc -3 ton	12,612	12,678	15,138
Local flights	9,798	12,365	17,612
Training flights	25,559	20,627	21,178
Other flights	127	326	733
<b>Total</b>	<b>147,849</b>	<b>174,858</b>	<b>176,971</b>



### Movements

	2006	2007	2008
Scheduled flights	3,228	4,077	3,648
Charter flights	198	140	178
Ad hoc +3 ton	5,982	6,821	6,834
Ad hoc -3 ton	11,737	12,010	12,863
Local flights	8,340	7,426	10,799
Training flights	24,870	20,813	21,110
Other flights	668	302	640
<b>Total</b>	<b>55,023</b>	<b>51,589</b>	<b>56,072</b>

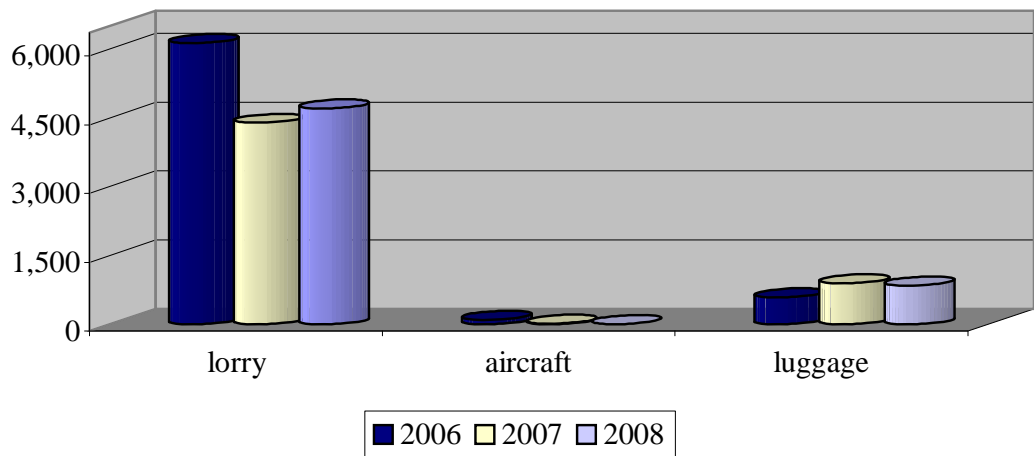




## Cargo (in tons)

	2006	2007	2008
Lorry	6,133	4,396	4,704
Aircraft	101	20	7
Luggage	591	896	851
<b>Total</b>	<b>6,825</b>	<b>5,312</b>	<b>5,562</b>

Cargo (in tons) per type

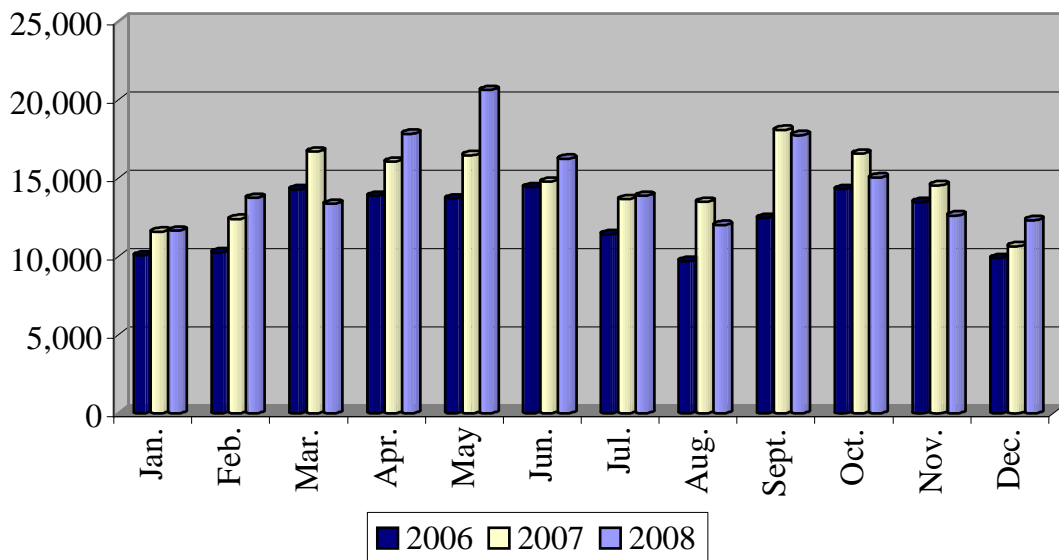


# Evolution per month 1998-2008

## Passengers

	1998	1999	2000	2001	2002	2003	2004	2005	2006	2007	2008
January	16,445	14,458	17,848	20,203	15,169	13,190	10,045	10,057	10,066	11,572	11,651
February	18,135	13,594	19,592	20,450	15,846	13,196	11,549	10,900	10,269	12,380	13,735
March	20,311	17,814	21,092	23,083	20,927	15,826	13,767	11,771	14,279	16,692	13,360
April	19,029	20,235	20,899	21,738	18,273	14,733	12,434	11,992	13,870	16,052	17,818
May	20,804	21,811	25,890	26,766	22,538	16,307	13,116	11,933	13,695	16,459	20,613
June	18,993	21,439	24,965	25,280	15,596	15,703	14,211	14,504	14,420	14,761	16,231
July	21,250	21,393	22,225	22,574	14,034	14,589	12,266	11,727	11,424	13,654	13,862
August	19,614	19,831	20,977	22,729	11,366	12,043	12,602	11,477	9,704	13,480	12,004
September	18,077	20,468	22,897	21,378	14,861	15,057	15,714	13,578	12,464	18,068	17,734
October	17,679	21,080	22,785	22,902	15,149	14,053	13,742	11,555	14,301	16,560	15,034
November	17,190	21,600	22,769	24,989	13,577	12,698	12,745	11,846	13,464	14,530	12,609
December	13,996	17,390	19,637	21,116	13,026	10,888	10,491	11,397	9,893	10,650	12,320
<b>Total</b>	<b>221,523</b>	<b>231,113</b>	<b>261,576</b>	<b>273,208</b>	<b>190,362</b>	<b>168,283</b>	<b>152,682</b>	<b>142,737</b>	<b>147,849</b>	<b>174,858</b>	<b>176,971</b>

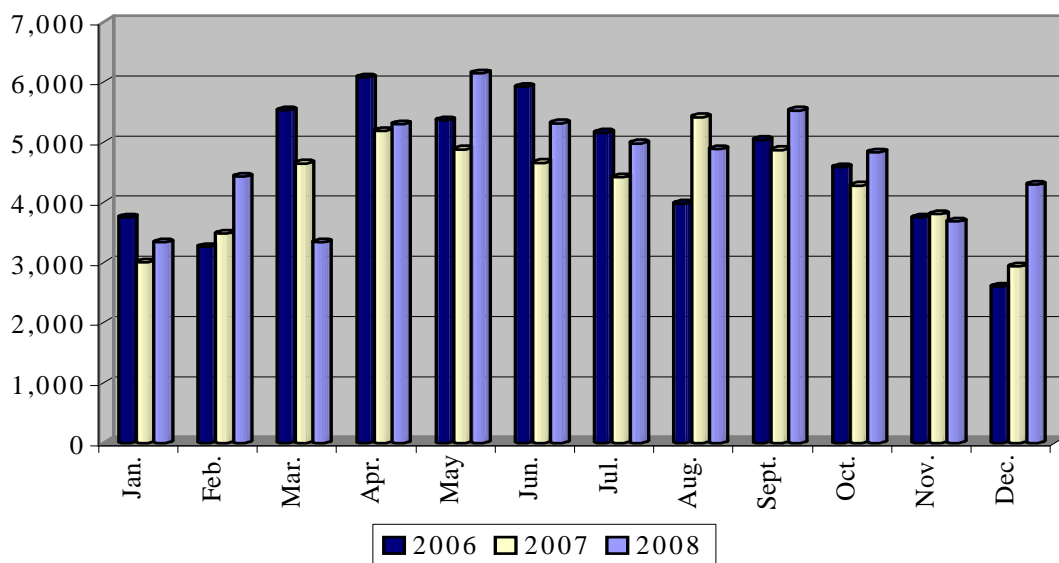
Passengers per month



## Movements

	1998	1999	2000	2001	2002	2003	2004	2005	2006	2007	2008
January	4,138	4,594	4,902	5,746	4,249	3,871	3,758	3,972	3,752	3,006	3,336
February	4,546	3,986	6,106	5,263	4,098	5,107	3,816	3,494	3,262	3,482	4,430
March	5,046	6,512	5,444	4,857	6,899	6,232	5,640	4,570	5,532	4,646	3,337
April	5,244	7,216	6,207	6,218	6,906	4,888	5,384	4,634	6,078	5,190	5,302
May	6,538	7,868	6,142	7,194	7,196	6,534	5,796	4,714	5,364	4,880	6,147
June	5,560	7,814	6,741	6,788	6,052	5,996	5,330	5,200	5,922	4,657	5,314
July	6,482	8,047	6,136	6,424	6,083	6,107	5,306	5,029	5,158	4,418	4,981
August	7,438	6,852	6,296	6,804	5,500	5,782	5,978	6,218	3,980	5,419	4,885
September	5,596	6,128	5,336	5,408	6,176	5,715	5,462	5,178	5,038	4,870	5,530
October	3,868	5,838	4,849	6,156	5,086	5,030	5,064	4,530	4,586	4,281	4,833
November	4,864	5,982	5,416	4,685	4,994	4,648	3,668	3,622	3,748	3,805	3,683
December	3,142	3,533	3,334	3,972	4,196	4,090	2,930	3,710	2,603	2,935	4,294
<b>Total</b>	<b>62,462</b>	<b>74,370</b>	<b>66,909</b>	<b>69,515</b>	<b>67,435</b>	<b>64,000</b>	<b>58,132</b>	<b>54,871</b>	<b>55,023</b>	<b>51,589</b>	<b>56,072</b>

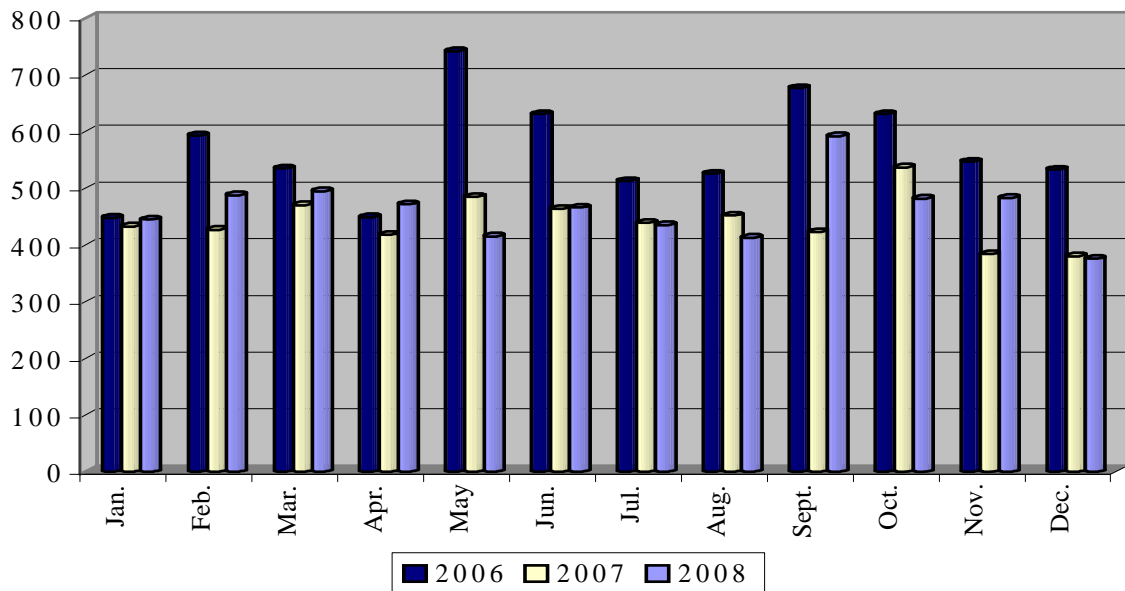
Movements per month



## Cargo (in tons)

	1998	1999	2000	2001	2002	2003	2004	2005	2006	2007	2008
January	536	531	681	626	517	471	263	372	448	433	445
February	577	541	526	630	540	413	334	409	593	427	488
March	544	454	561	596	454	307	334	471	535	470	495
April	590	546	573	500	292	308	416	382	449	418	472
May	554	540	828	600	445	389	309	417	742	485	415
June	547	503	820	559	483	377	334	405	631	464	466
July	770	737	584	634	545	521	350	410	513	439	435
August	604	622	742	645	355	420	337	357	526	452	413
September	619	621	709	423	370	413	277	360	677	423	592
October	569	633	649	464	372	384	439	329	631	537	482
November	489	898	619	502	422	466	433	359	547	384	483
December	461	655	705	505	445	434	455	393	533	380	376
<b>Total</b>	<b>6,860</b>	<b>7,281</b>	<b>7,997</b>	<b>6,684</b>	<b>5,240</b>	<b>4,903</b>	<b>4,281</b>	<b>4,664</b>	<b>6,825</b>	<b>5,312</b>	<b>5,562</b>

Cargo (in tons) per month



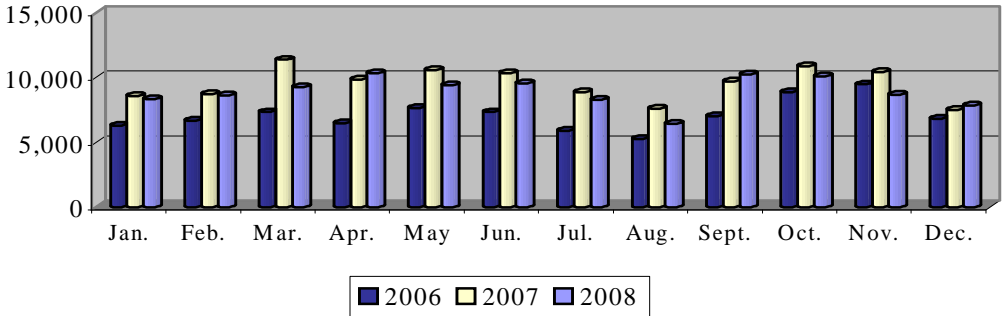
# Monthly per type of traffic 2006-2008

## Scheduled flights

### Passengers

	Jan.	Feb.	Mar.	Apr.	May	Jun.	Jul.	Aug.	Sept.	Oct.	Nov.	Dec.	Total
<b>2006</b>	6,285	6,655	7,331	6,468	7,653	7,330	5,907	5,257	7,029	8,885	9,477	6,822	<b>85,099</b>
<b>2007</b>	8,595	8,738	11,380	9,831	10,560	10,336	8,872	7,598	9,713	10,858	10,430	7,516	<b>114,427</b>
<b>2008</b>	8,344	8,623	9,238	10,350	9,415	9,550	8,301	6,405	10,251	10,082	8,683	7,829	<b>107,071</b>

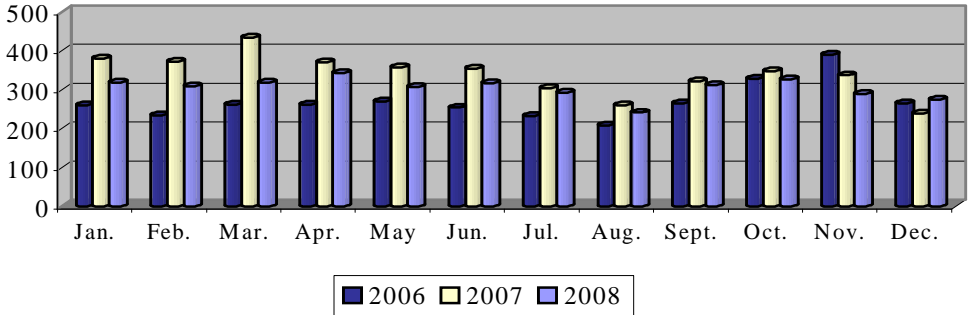
Passengers scheduled flights



### Movements

	Jan.	Feb.	Mar.	Apr.	May	Jun.	Jul.	Aug.	Sept.	Oct.	Nov.	Dec.	Total
<b>2006</b>	260	234	262	262	270	254	232	208	264	328	390	264	<b>3,228</b>
<b>2007</b>	380	372	434	370	358	354	304	260	321	348	337	239	<b>4,077</b>
<b>2008</b>	319	308	319	343	307	316	293	241	312	326	289	275	<b>3,648</b>

Movements scheduled flights

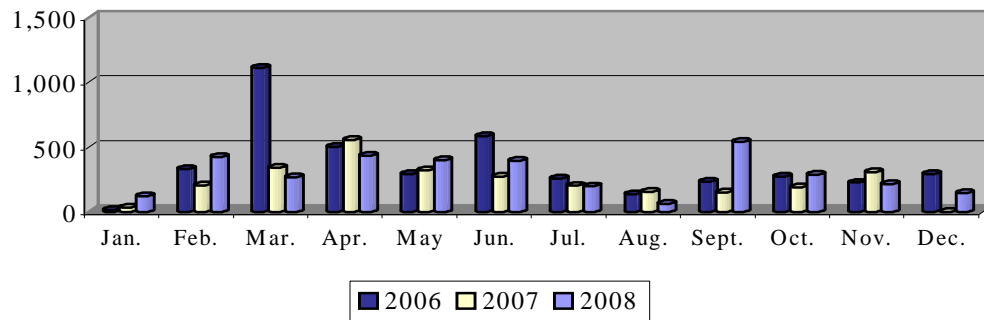


## Charter flights

### Passengers

	Jan.	Feb.	Mar.	Apr.	May	Jun.	Jul.	Aug.	Sept.	Oct.	Nov.	Dec.	Total
<b>2006</b>	14	330	1,112	499	292	584	258	136	232	270	225	290	<b>4,242</b>
<b>2007</b>	31	202	342	556	320	270	201	153	148	188	307	0	<b>2,718</b>
<b>2008</b>	122	423	266	432	400	392	196	62	541	288	215	146	<b>3,483</b>

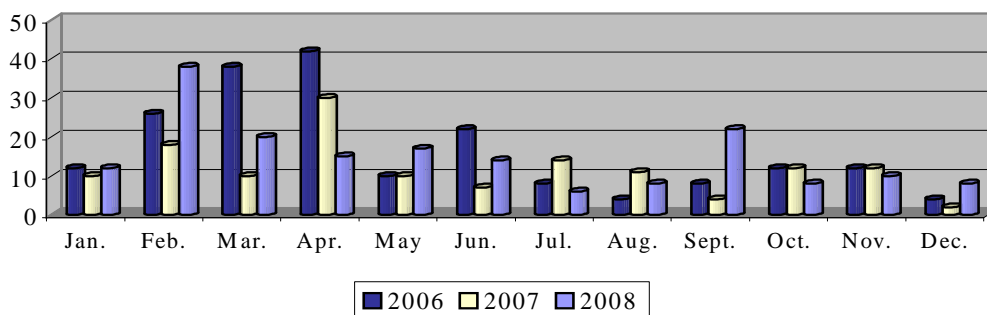
Passengers charter flights



### Movements

	Jan.	Feb.	Mar.	Apr.	May	Jun.	Jul.	Aug.	Sept.	Oct.	Nov.	Dec.	Total
<b>2006</b>	12	26	38	42	10	22	8	4	8	12	12	4	<b>198</b>
<b>2007</b>	10	18	10	30	10	7	14	11	4	12	12	2	<b>140</b>
<b>2008</b>	12	38	20	15	17	14	6	8	22	8	10	8	<b>178</b>

Movements charter flights

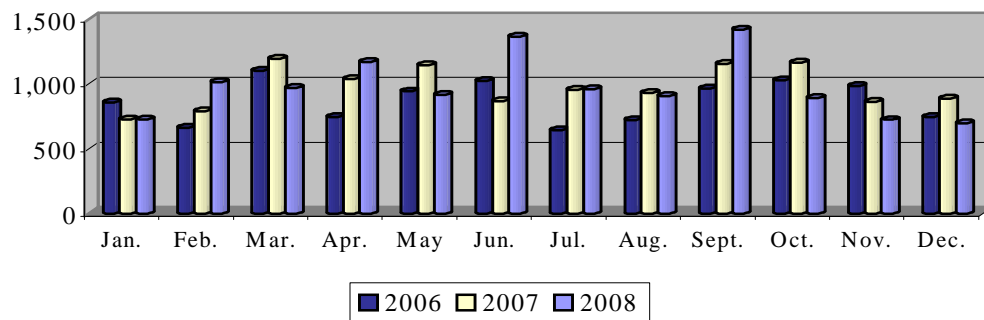


## Ad hoc flights + 3 ton

### Passengers

	Jan.	Feb.	Mar.	Apr.	May	Jun.	Jul.	Aug.	Sept.	Oct.	Nov.	Dec.	Total
<b>2006</b>	858	660	1,102	744	943	1,023	642	719	966	1,027	984	744	<b>10,412</b>
<b>2007</b>	725	788	1,196	1,037	1,147	869	957	930	1,154	1,164	863	887	<b>11,717</b>
<b>2008</b>	725	1,013	968	1,170	915	1,366	961	908	1,419	891	723	697	<b>11,756</b>

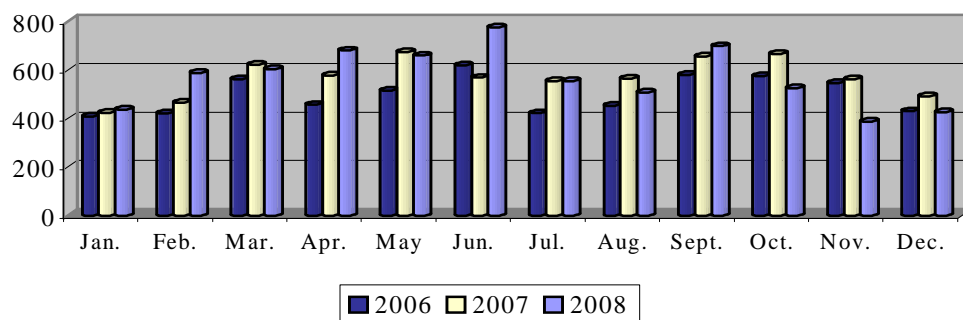
Passengers ad hoc flights + 3 ton



### Movements

	Jan.	Feb.	Mar.	Apr.	May	Jun.	Jul.	Aug.	Sept.	Oct.	Nov.	Dec.	Total
<b>2006</b>	408	420	562	456	514	618	422	452	580	574	546	430	<b>5,982</b>
<b>2007</b>	424	464	622	578	674	568	553	564	656	665	562	491	<b>6,821</b>
<b>2008</b>	437	588	602	680	659	775	553	506	698	525	386	425	<b>6,834</b>

Movements ad hoc flights + 3 ton

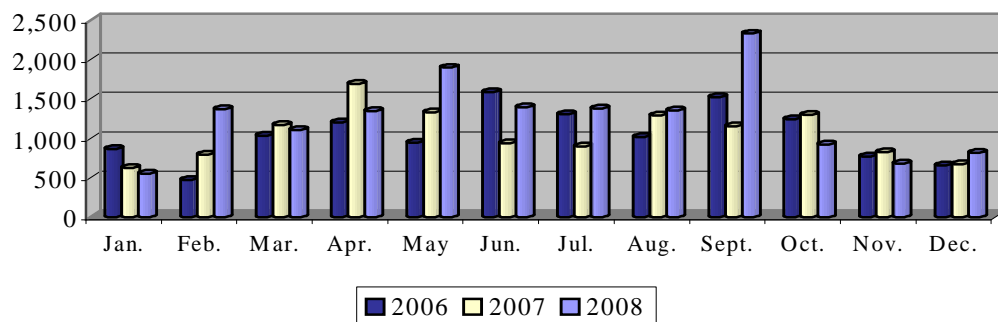


## Ad hoc flights – 3 ton

### Passengers

	Jan.	Feb.	Mar.	Apr.	May	Jun.	Jul.	Aug.	Sept.	Oct.	Nov.	Dec.	Total
<b>2006</b>	863	471	1,034	1,205	943	1,589	1,305	1,019	1,521	1,243	764	655	<b>12,612</b>
<b>2007</b>	623	793	1,170	1,692	1,330	938	894	1,287	1,152	1,302	824	673	<b>12,678</b>
<b>2008</b>	548	1,367	1,106	1,347	1,897	1,395	1,377	1,351	2,331	921	680	818	<b>15,138</b>

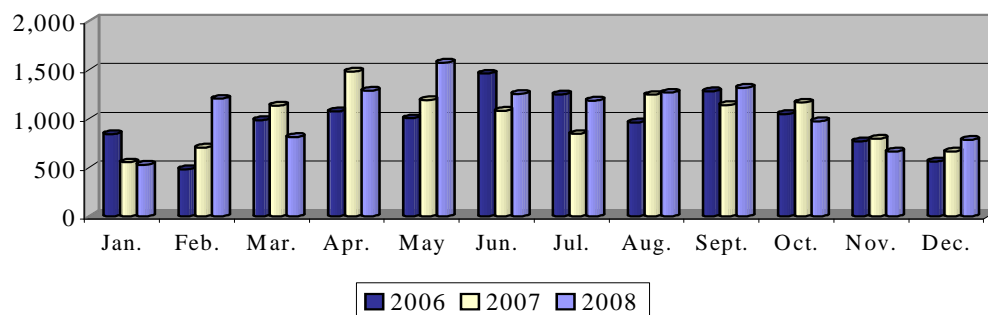
Passengers ad hoc flights - 3 ton



### Movements

	Jan.	Feb.	Mar.	Apr.	May	Jun.	Jul.	Aug.	Sept.	Oct.	Nov.	Dec.	Total
<b>2006</b>	844	484	986	1,076	1,006	1,462	1,250	962	1,282	1,050	770	565	<b>11,737</b>
<b>2007</b>	554	704	1,136	1,484	1,190	1,082	846	1,246	1,141	1,166	796	665	<b>12,010</b>
<b>2008</b>	529	1,206	814	1,287	1,575	1,255	1,187	1,268	1,318	975	665	784	<b>12,863</b>

Movements ad hoc flights - 3 ton



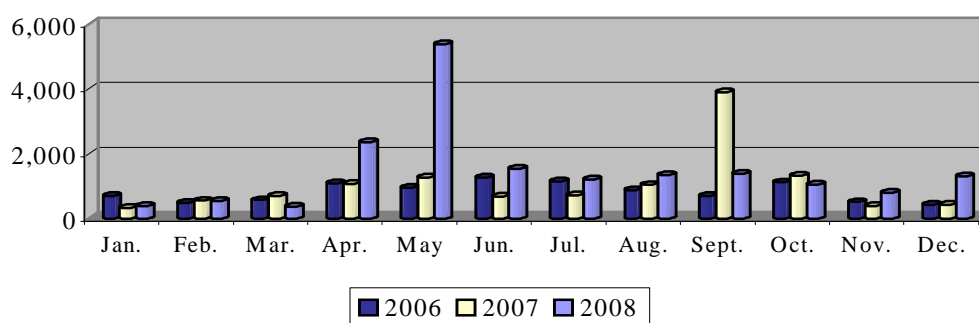


## Local flights

### Passengers

	Jan.	Feb.	Mar.	Apr.	May	Jun.	Jul.	Aug.	Sept.	Oct.	Nov.	Dec.	Total
<b>2006</b>	688	478	568	1,088	958	1,256	1,142	874	700	1,116	510	420	<b>9,798</b>
<b>2007</b>	324	550	702	1,062	1,258	683	722	1,038	3,894 <sup>1</sup>	1,316	388	428	<b>12,365</b>
<b>2008</b>	378	536	356	2,364	5,376	1,532	1,212	1,346	1,374	1,050	788	1,300	<b>17,612</b>

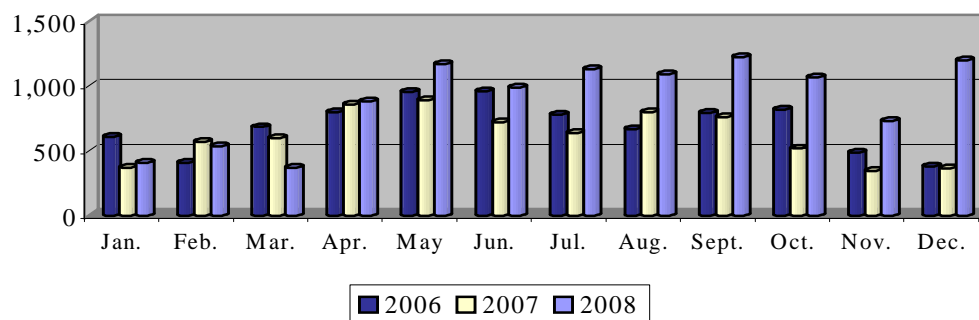
Passengers local flights



### Movements

	Jan.	Feb.	Mar.	Apr.	May	Jun.	Jul.	Aug.	Sept.	Oct.	Nov.	Dec.	Total
<b>2006</b>	608	408	684	798	954	962	780	666	794	818	488	380	<b>8,340</b>
<b>2007</b>	370	568	600	856	890	720	638	798	758	518	344	366	<b>7,426</b>
<b>2008</b>	410	534	370	880	1,171	990	1,132	1,090	1,224	1,068	732	1,198	<b>10,799</b>

Movements local flights



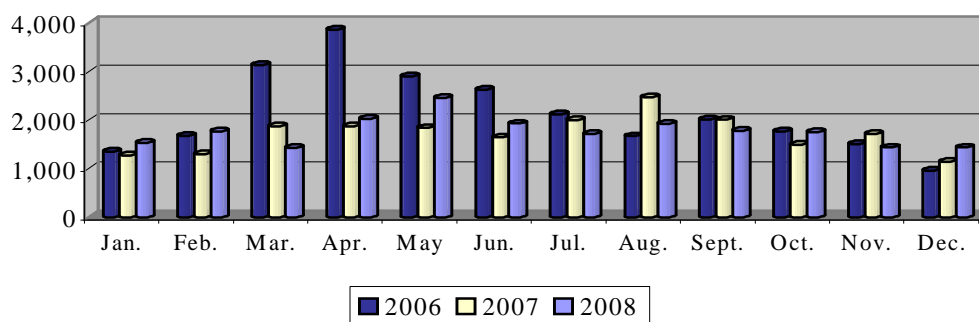
<sup>1</sup> On 18 September 2007 the 27<sup>th</sup> "Luchtvaartdag" took place whereby over 1,400 disabled children made their first flight. In total, about 40 flights were performed.

## Training flights

### Passengers

	Jan.	Feb.	Mar.	Apr.	May	Jun.	Jul.	Aug.	Sept.	Oct.	Nov.	Dec.	Total
<b>2006</b>	1,350	1,673	3,128	3,864	2,898	2,628	2,112	1,668	2,016	1,760	1,500	962	<b>25,559</b>
<b>2007</b>	1,266	1,302	1,872	1,868	1,838	1,642	2,004	2,474	2,007	1,490	1,718	1,146	<b>20,627</b>
<b>2008</b>	1,530	1,768	1,426	2,028	2,456	1,928	1,710	1,926	1,784	1,754	1,434	1,434	<b>21,178</b>

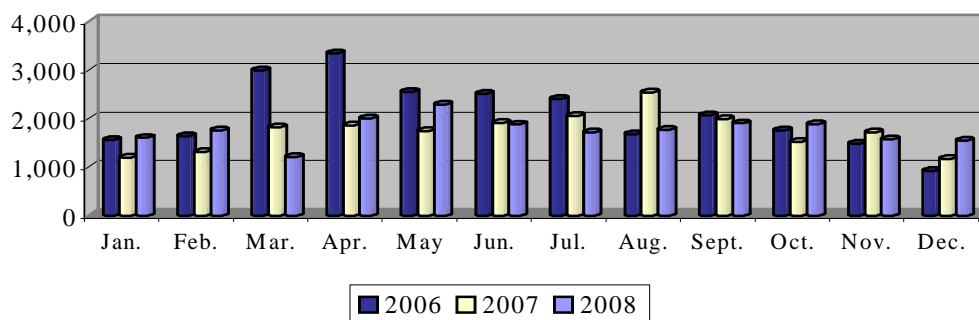
Passengers training flights



### Movements

	Jan.	Feb.	Mar.	Apr.	May	Jun.	Jul.	Aug.	Sept.	Oct.	Nov.	Dec.	Total
<b>2006</b>	1,554	1,640	2,994	3,340	2,546	2,512	2,400	1,672	2,064	1,748	1,480	920	<b>24,870</b>
<b>2007</b>	1,196	1,314	1,818	1,860	1,736	1,914	2,053	2,538	1,986	1,516	1,712	1,170	<b>20,813</b>
<b>2008</b>	1,603	1,752	1,210	1,997	2,291	1,877	1,712	1,764	1,902	1,882	1,570	1,550	<b>21,110</b>

Movements training flights



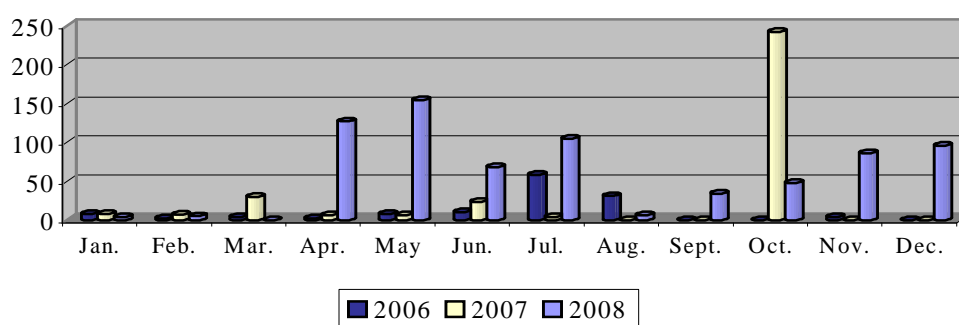
## Other flights

(= military flights, photo flights, diversions)

### Passengers

	Jan.	Feb.	Mar.	Apr.	May	Jun.	Jul.	Aug.	Sept.	Oct.	Nov.	Dec.	Total
<b>2006</b>	8	2	4	2	8	10	58	31	0	0	4	0	<b>127</b>
<b>2007</b>	8	7	30	6	6	23	4	0	0	242 <sup>2</sup>	0	0	<b>326</b>
<b>2008</b>	4	5	0	127 <sup>3</sup>	154	68	105	6	34	48	86	96	<b>733</b>

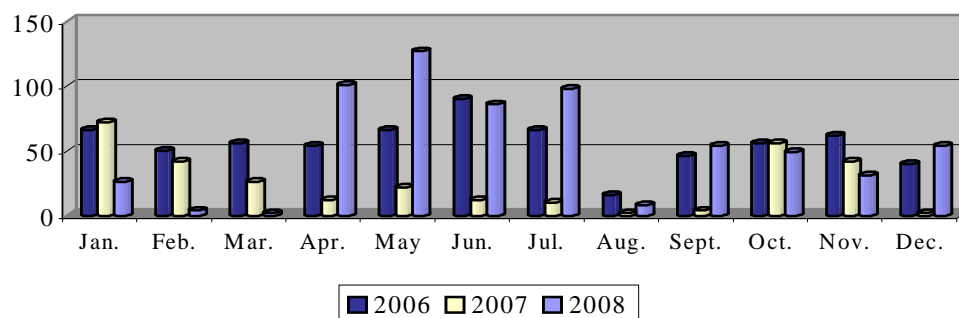
Passengers other flights



### Movements

	Jan.	Feb.	Mar.	Apr.	May	Jun.	Jul.	Aug.	Sept.	Oct.	Nov.	Dec.	Total
<b>2006</b>	66	50	56	54	66	90	66	16	46	56	62	40	<b>668</b>
<b>2007</b>	72	42	26	12	22	12	10	2	4	56	42	2	<b>302</b>
<b>2008</b>	26	4	2	101	127	86	98	8	54	49	31	54	<b>640</b>

Movements other flights



<sup>2</sup> On 8 October 2007 a 4-day army exercise started with the landing of 8 C-130's at Antwerp Airport. Troops and vehicles were disembarked for the remainder of the exercise in the Antwerp region.

<sup>3</sup> From April 2008 photo flights and diversions are mentioned in the monthly statistics as a separate category; previously, they were included in the ad-hoc flights.

# Glossary

## 1. SCHEDULED FLIGHTS

Regular commercial flights.

## 2. CHARTER FLIGHTS

Flights and accommodation, or flights only, reserved to the members of an association traveling group.

## 3. AD HOC FLIGHTS (–3 TON AND +3 TON)

Transfer by aircraft for business purposes, or a flight performed by an aircraft with a maximum seat capacity of 7 passengers, for which the planned destination includes one or more landings outside the airport of departure.

## 4. LOCAL FLIGHTS

- 4.1. Transfer by aircraft for which the airport of departure is the planned destination, so that the flight includes no landings outside the airport of departure.
- 4.2. Maiden flights.

## 5. TRAINING FLIGHTS

- 5.1. Flight performed by a student-pilot to become a license.
- 5.2. Flight performed
  - for purpose of the issue, renewal or restitution of a certificate of airworthiness;
  - to control ground installations.
- 5.3. Flight performed by an aircraft for crew training.

## **6. OTHER FLIGHTS**

6.1. Diversions.

6.2. Delivery flight: flight to deliver an aircraft.

6.3. Empty flight to bring an aircraft in position.

6.4. Military flights.

6.5. Flights for exclusive transport of heads of state or members of government in the exercise of their duty.

Logo Vlaamse overheid

**Composition**

Department Mobility and Public Works  
Antwerp Airport  
Katleen Pittevels

**Responsible publisher**

Ir. Fernand Desmyter  
Secretaris-generaal

**Printed by**

Agency for Facility Management  
Digitale Drukkerij

**Catalogue number**

D/2009/3241/044

**Edition** January 2009

(achterkant kaart)