



## STATISTICAL YEARBOOK 2007



Flemish government



Department Mobility and Public Works  
Antwerp Airport

## CONTENTS

<b><u>PREFACE .....</u></b>	<b><u>3</u></b>
<b><u>EVOLUTION 1997-2007 .....</u></b>	<b><u>5</u></b>
PASSENGERS .....	5
MOVEMENTS .....	5
CARGO (IN TONS) .....	5
<b><u>PER TYPE OF TRAFFIC 2005-2007.....</u></b>	<b><u>6</u></b>
PASSENGERS .....	6
MOVEMENTS .....	6
CARGO (IN TONS) .....	7
<b><u>EVOLUTION PER MONTH 1997-2007.....</u></b>	<b><u>8</u></b>
PASSENGERS .....	8
MOVEMENTS .....	9
CARGO (IN TONS) .....	10
<b><u>MONTHLY PER TYPE OF TRAFFIC 2005-2007.....</u></b>	<b><u>11</u></b>
SCHEDULED FLIGHTS.....	11
CHARTER FLIGHTS.....	12
AD HOC FLIGHTS + 3 TON .....	13
AD HOC FLIGHTS – 3 TON.....	14
LOCAL FLIGHTS .....	15
TRAINING FLIGHTS .....	16
OTHER FLIGHTS .....	17
<b><u>GLOSSARY .....</u></b>	<b><u>18</u></b>



## Preface

Antwerp Airport is managed as a Separate Management Service by the Flemish government, Department of Mobility and Public Works. This Statistical Yearbook 2007 contains detailed information about passenger numbers, the number of movements and freight at Antwerp Airport.

Following several years of falling figures, this trend was broken in 2006 with an increase of 3.6% to 147,849 passengers. The year 2007 was closed with an overall passenger number of 174,858, which means that growth continues with an increase of over 18% compared to the previous year. However, the number of flight movements declined by about 6% to 51,589. This is mainly due to the decreasing number of training flights.

Over 114,000 passengers used the scheduled flights to London City and Manchester which are provided by VLM Airlines. With an increase of almost 10% the number of passengers on the route to London City continues to rise each year. The route to Manchester, which was started late October 2006, also turns out a success. In addition, business aviation (ad hoc flights + 3 tonnes) is still on the rise, recording a 13% increase in passenger numbers.

Additional copies of this Statistical Yearbook 2007 can be ordered from:

Flemish Government  
Departement Mobility and Public Works  
**Antwerp Airport**  
Luchthavenlei z/n  
2100 Antwerpen

Tel: 03-285 65 00

Fax: 03-285 65 01

Statistical data may be reproduced provided the source is fully acknowledged.

January 2008

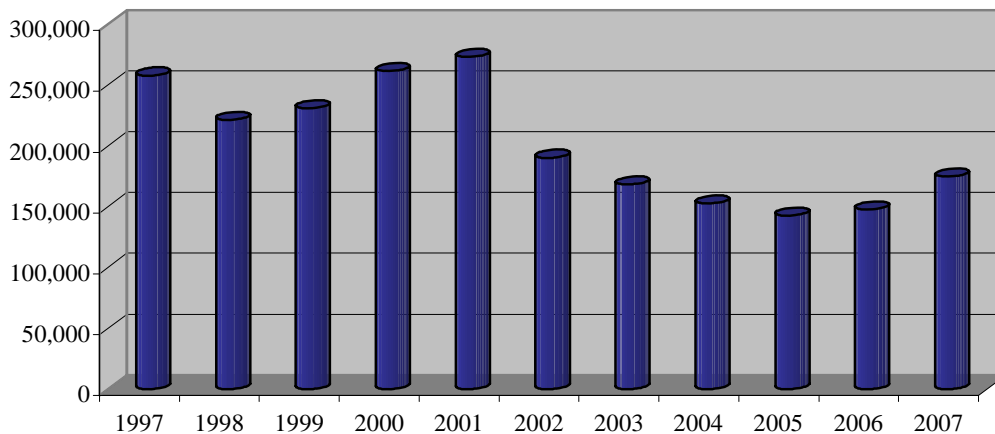
Dutch version available



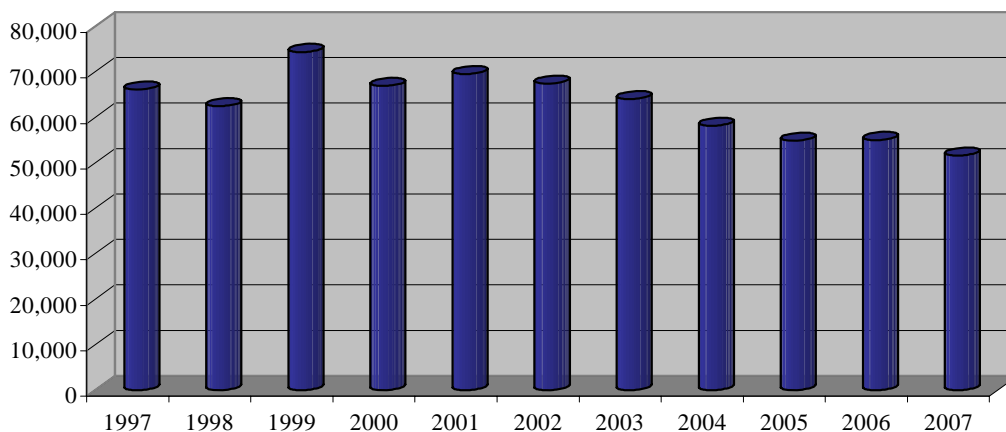
## Evolution 1997-2007

	1997	1998	1999	2000	2001	2002	2003	2004	2005	2006	2007
<b>Passengers</b>	257,887	221,523	231,113	261,576	273,208	190,362	168,283	152,682	142,737	147,849	<b>174,858</b>
<b>Movements</b>	66,109	62,462	74,370	66,909	69,515	67,435	64,000	58,132	54,871	55,023	<b>51,589</b>
<b>Cargo (in tons)</b>	8,010	6,860	7,281	7,997	6,684	5,240	4,903	4,281	4,664	6,825	<b>5,312</b>

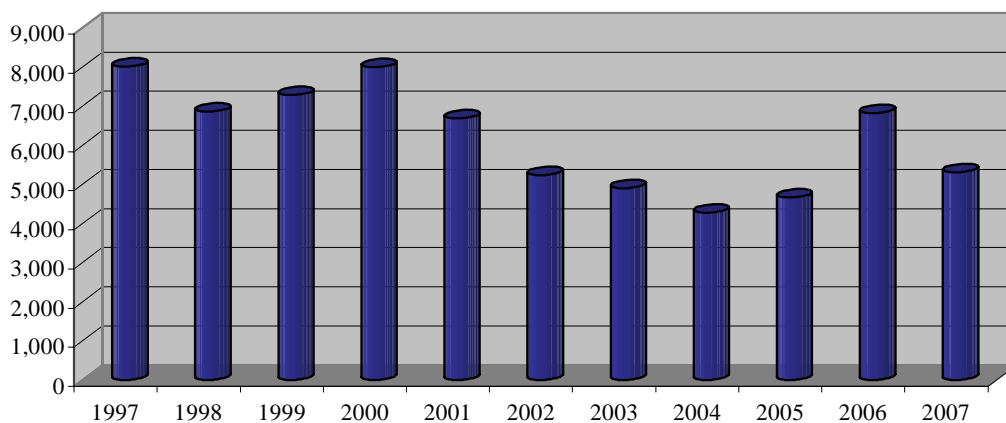
### Passengers



### Movements



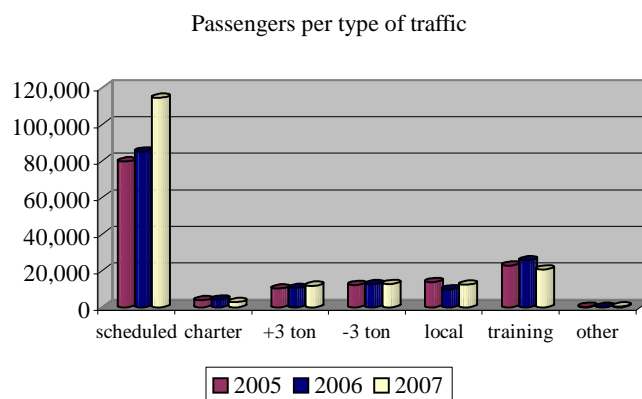
### Cargo (in tons)



## Per type of traffic 2005-2007

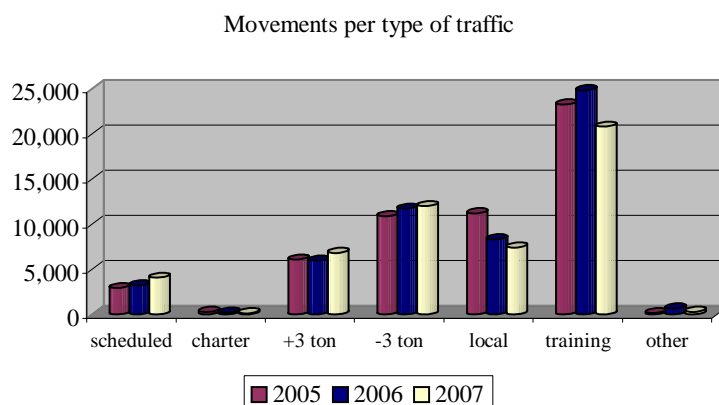
### Passengers

	2005	2006	2007
Scheduled flights <sup>1</sup>	79,990	85,099	114,427
Charter flights <sup>1</sup>	3,468	4,242	2,718
Ad hoc +3 ton	10,240	10,412	11,717
Ad hoc -3 ton	12,239	12,612	12,678
Local flights	13,742	9,798	12,365
Training flights	22,788	25,559	20,627
Other flights	270	127	326
<b>Total</b>	<b>142,737</b>	<b>147,849</b>	<b>174,858</b>



### Movements

	2005	2006	2007
Scheduled flights	2,950	3,228	4,077
Charter flights <sup>1</sup>	264	198	140
Ad hoc +3 ton	6,084	5,982	6,821
Ad hoc -3 ton	10,906	11,737	12,010
Local flights	11,216	8,340	7,426
Training flights	23,289	24,870	20,813
Other flights	162	668	302
<b>Total</b>	<b>54,871</b>	<b>55,023</b>	<b>51,589</b>

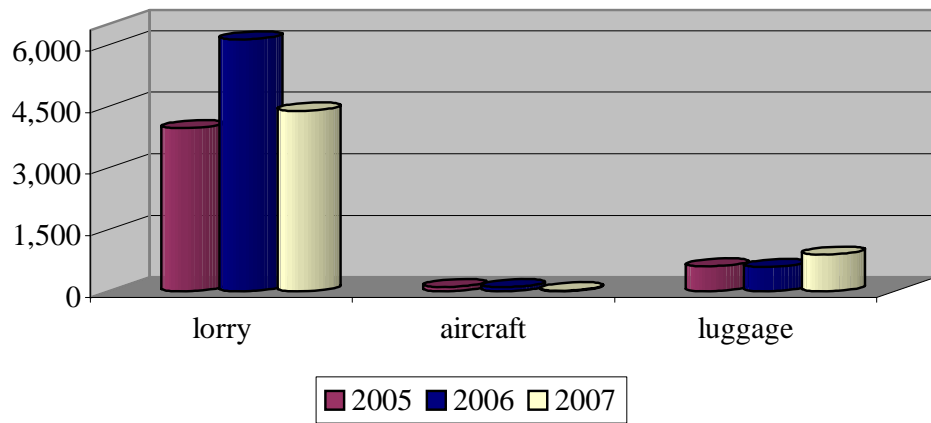


<sup>1</sup> These figures differ from those published in the Statistical Yearbook 2005 as a result of the reclassification of the flights operated by Welcome Air as scheduled flights instead of charter flights.

## Cargo (in tons)

	2005	2006	2007
Lorry	3,952	6,133	4,396
Aircraft	107	101	20
Luggage	605	591	896
<b>Total</b>	<b>4,664</b>	<b>6,825</b>	<b>5,312</b>

Cargo (in tons) per type



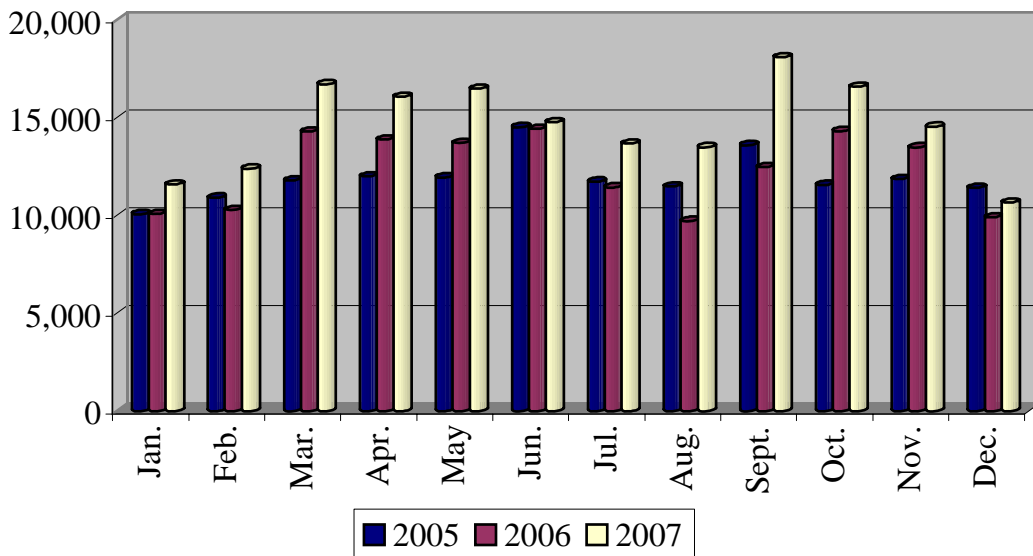


# Evolution per month 1997-2007

## Passengers

	1997	1998	1999	2000	2001	2002	2003	2004	2005	2006	2007
<b>January</b>	18,091	16,445	14,458	17,848	20,203	15,169	13,190	10,045	10,057	10,066	11,572
<b>February</b>	19,015	18,135	13,594	19,592	20,450	15,846	13,196	11,549	10,900	10,269	12,380
<b>March</b>	23,294	20,311	17,814	21,092	23,083	20,927	15,826	13,767	11,771	14,279	16,692
<b>April</b>	22,746	19,029	20,235	20,899	21,738	18,273	14,733	12,434	11,992	13,870	16,052
<b>May</b>	24,058	20,804	21,811	25,890	26,766	22,538	16,307	13,116	11,933	13,695	16,459
<b>June</b>	22,819	18,993	21,439	24,965	25,280	15,596	15,703	14,211	14,504	14,420	14,761
<b>July</b>	22,837	21,250	21,393	22,225	22,574	14,034	14,589	12,266	11,727	11,424	13,654
<b>August</b>	20,863	19,614	19,831	20,977	22,729	11,366	12,043	12,602	11,477	9,704	13,480
<b>September</b>	22,848	18,077	20,468	22,897	21,378	14,861	15,057	15,714	13,578	12,464	18,068
<b>October</b>	21,998	17,679	21,080	22,785	22,902	15,149	14,053	13,742	11,555	14,301	16,560
<b>November</b>	19,335	17,190	21,600	22,769	24,989	13,577	12,698	12,745	11,846	13,464	14,530
<b>December</b>	19,983	13,996	17,390	19,637	21,116	13,026	10,888	10,491	11,397	9,893	10,650
<b>Total</b>	<b>257,887</b>	<b>221,523</b>	<b>231,113</b>	<b>261,576</b>	<b>273,208</b>	<b>190,362</b>	<b>168,283</b>	<b>152,682</b>	<b>142,737</b>	<b>147,849</b>	<b>174,858</b>

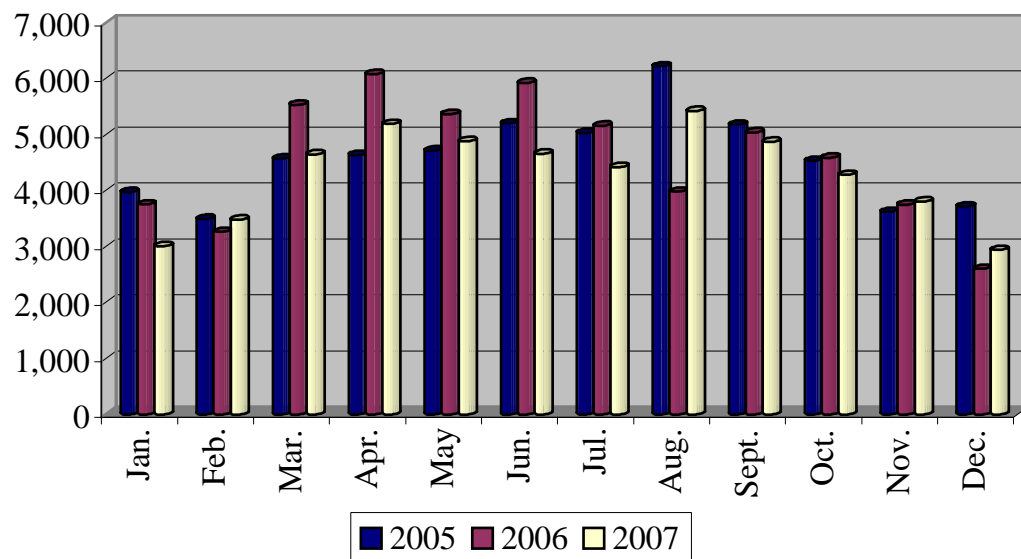
Passengers per month



## Movements

	1997	1998	1999	2000	2001	2002	2003	2004	2005	2006	2007
January	3,820	4,138	4,594	4,902	5,746	4,249	3,871	3,758	3,972	3,752	3,006
February	3,928	4,546	3,986	6,106	5,263	4,098	5,107	3,816	3,494	3,262	3,482
March	5,694	5,046	6,512	5,444	4,857	6,899	6,232	5,640	4,570	5,532	4,646
April	7,168	5,244	7,216	6,207	6,218	6,906	4,888	5,384	4,634	6,078	5,190
May	7,492	6,538	7,868	6,142	7,194	7,196	6,534	5,796	4,714	5,364	4,880
June	6,430	5,560	7,814	6,741	6,788	6,052	5,996	5,330	5,200	5,922	4,657
July	6,500	6,482	8,047	6,136	6,424	6,083	6,107	5,306	5,029	5,158	4,418
August	5,808	7,438	6,852	6,296	6,804	5,500	5,782	5,978	6,218	3,980	5,419
September	6,255	5,596	6,128	5,336	5,408	6,176	5,715	5,462	5,178	5,038	4,870
October	5,490	3,868	5,838	4,849	6,156	5,086	5,030	5,064	4,530	4,586	4,281
November	3,706	4,864	5,982	5,416	4,685	4,994	4,648	3,668	3,622	3,748	3,805
December	3,818	3,142	3,533	3,334	3,972	4,196	4,090	2,930	3,710	2,603	2,935
<b>Total</b>	<b>66,109</b>	<b>62,462</b>	<b>74,370</b>	<b>66,909</b>	<b>69,515</b>	<b>67,435</b>	<b>64,000</b>	<b>58,132</b>	<b>54,871</b>	<b>55,023</b>	<b>51,589</b>

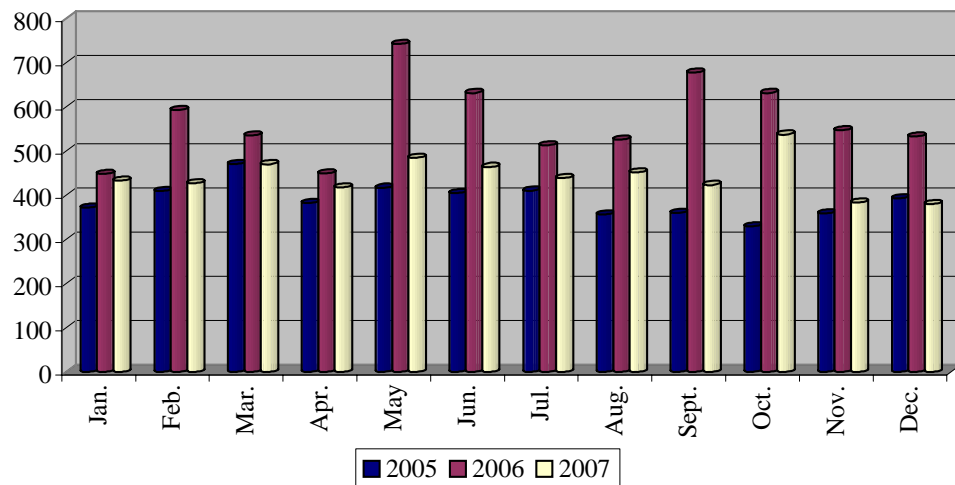
### Movements per month



## Cargo (in tons)

	1997	1998	1999	2000	2001	2002	2003	2004	2005	2006	2007
January	602	536	531	681	626	517	471	263	372	448	433
February	508	577	541	526	630	540	413	334	409	593	427
March	532	544	454	561	596	454	307	334	471	535	470
April	625	590	546	573	500	292	308	416	382	449	418
May	596	554	540	828	600	445	389	309	417	742	485
June	599	547	503	820	559	483	377	334	405	631	464
July	868	770	737	584	634	545	521	350	410	513	439
August	887	604	622	742	645	355	420	337	357	526	452
September	691	619	621	709	423	370	413	277	360	677	423
October	759	569	633	649	464	372	384	439	329	631	537
November	732	489	898	619	502	422	466	433	359	547	384
December	611	461	655	705	505	445	434	455	393	533	380
<b>Total</b>	<b>8,010</b>	<b>6,860</b>	<b>7,281</b>	<b>7,997</b>	<b>6,684</b>	<b>5,240</b>	<b>4,903</b>	<b>4,281</b>	<b>4,664</b>	<b>6,825</b>	<b>5,312</b>

Cargo (in tons) per month



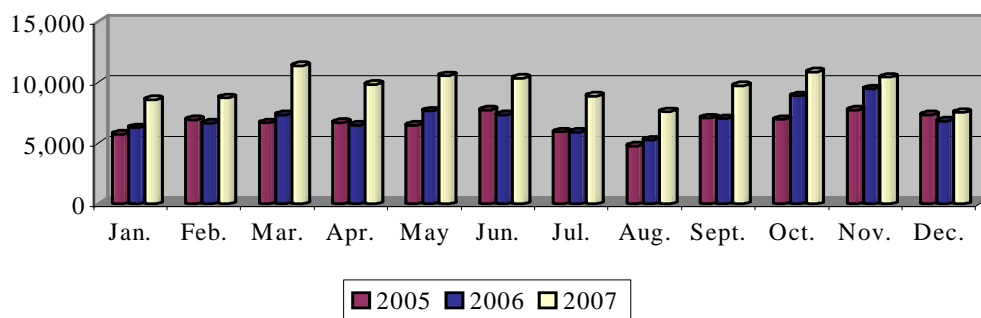
# Monthly per type of traffic 2005-2007

## Scheduled flights

### Passengers

	Jan.	Feb.	Mar.	Apr.	May	Jun.	Jul.	Aug.	Sept.	Oct.	Nov.	Dec.	Total
<b>2005</b>	5,732	6,938	6,660	6,695	6,484	7,716	5,927	4,768	7,081	6,947	7,723	7,319	<b>79,990</b>
<b>2006</b>	6,285	6,655	7,331	6,468	7,653	7,330	5,907	5,257	7,029	8,885	9,477	6,822	<b>85,099</b>
<b>2007</b>	8,595	8,738	11,380	9,831	10,560	10,336	8,872	7,598	9,713	10,858	10,430	7,516	<b>114,427</b>

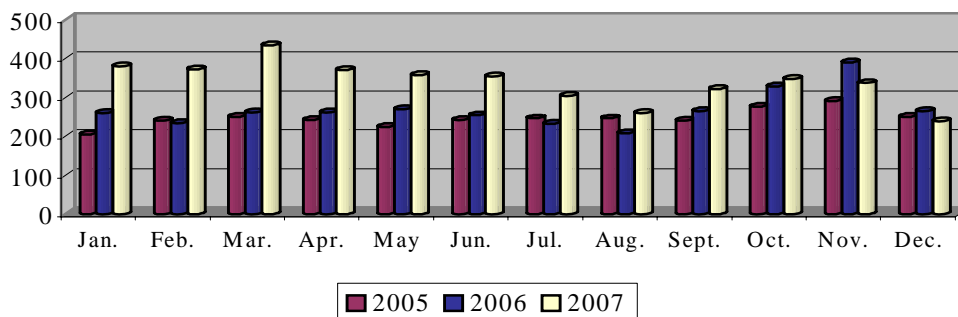
Passengers scheduled flights



### Movements

	Jan.	Feb.	Mar.	Apr.	May	Jun.	Jul.	Aug.	Sept.	Oct.	Nov.	Dec.	Total
<b>2005</b>	204	240	250	242	224	242	246	246	240	276	290	250	<b>2,950</b>
<b>2006</b>	260	234	262	262	270	254	232	208	264	328	390	264	<b>3,228</b>
<b>2007</b>	380	372	434	370	358	354	304	260	321	348	337	239	<b>4,077</b>

Movements scheduled flights

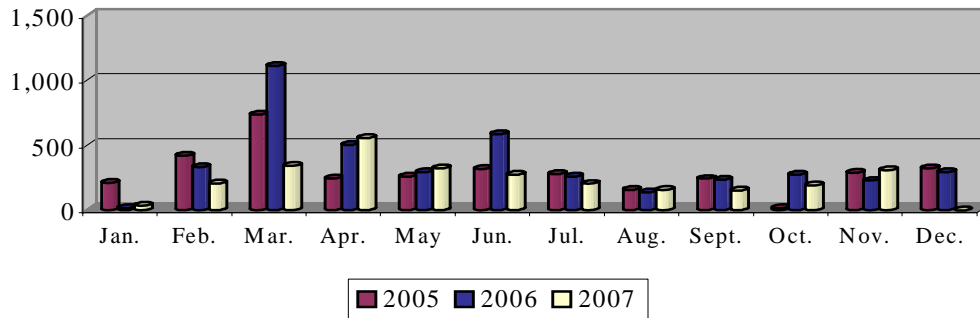


## Charter flights

### Passengers

	Jan.	Feb.	Mar.	Apr.	May	Jun.	Jul.	Aug.	Sept.	Oct.	Nov.	Dec.	Total
<b>2005</b>	206	416	737	243	259	315	276	155	240	14	285	322	<b>3,468</b>
<b>2006</b>	14	330	1,112	499	292	584	258	136	232	270	225	290	<b>4,242</b>
<b>2007</b>	31	202	342	556	320	270	201	153	148	188	307	0	<b>2,718</b>

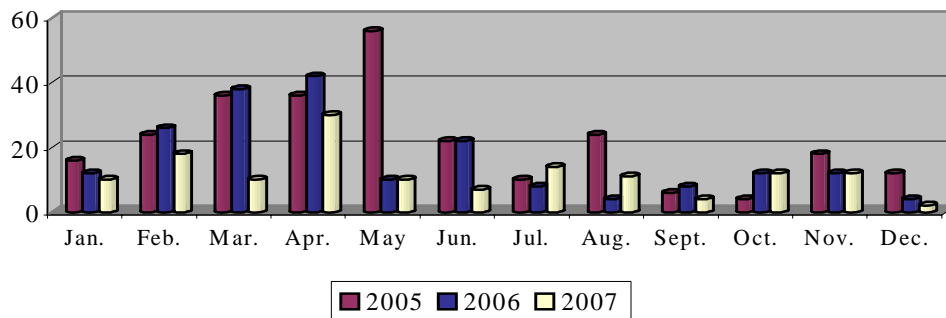
Passengers charter flights



### Movements

	Jan.	Feb.	Mar.	Apr.	May	Jun.	Jul.	Aug.	Sept.	Oct.	Nov.	Dec.	Total
<b>2005</b>	16	24	36	36	56	22	10	24	6	4	18	12	<b>264</b>
<b>2006</b>	12	26	38	42	10	22	8	4	8	12	12	4	<b>198</b>
<b>2007</b>	10	18	10	30	10	7	14	11	4	12	12	2	<b>140</b>

Movements charter flights

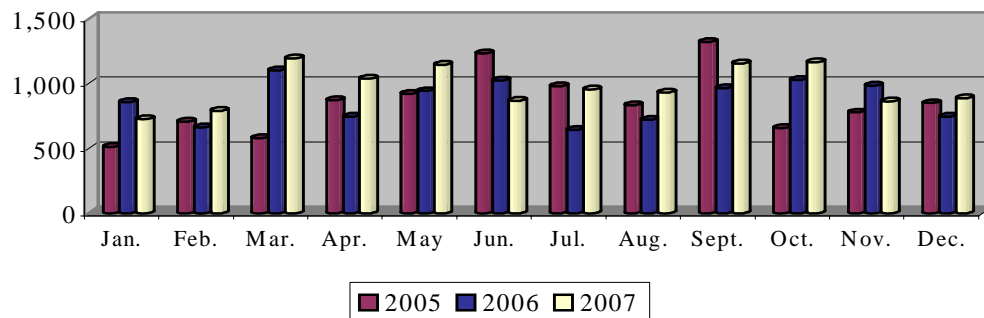


## Ad hoc flights + 3 ton

### Passengers

	Jan.	Feb.	Mar.	Apr.	May	Jun.	Jul.	Aug.	Sept.	Oct.	Nov.	Dec.	Total
<b>2005</b>	512	705	580	874	921	1,234	980	831	1,320	656	777	850	<b>10,240</b>
<b>2006</b>	858	660	1,102	744	943	1,023	642	719	966	1,027	984	744	<b>10,412</b>
<b>2007</b>	725	788	1,196	1,037	1,147	869	957	930	1,154	1,164	863	887	<b>11,717</b>

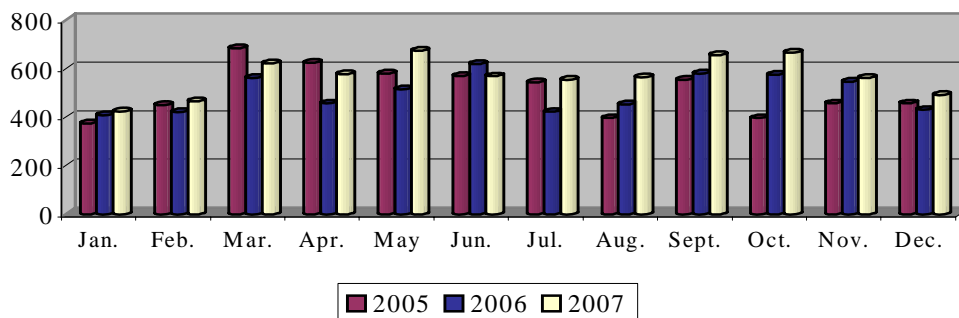
Passengers ad hoc flights + 3 ton



### Movements

	Jan.	Feb.	Mar.	Apr.	May	Jun.	Jul.	Aug.	Sept.	Oct.	Nov.	Dec.	Total
<b>2005</b>	374	450	684	624	580	570	544	396	554	396	456	456	<b>6,084</b>
<b>2006</b>	408	420	562	456	514	618	422	452	580	574	546	430	<b>5,982</b>
<b>2007</b>	424	464	622	578	674	568	553	564	656	665	562	491	<b>6,821</b>

Movements ad hoc flights + 3 ton

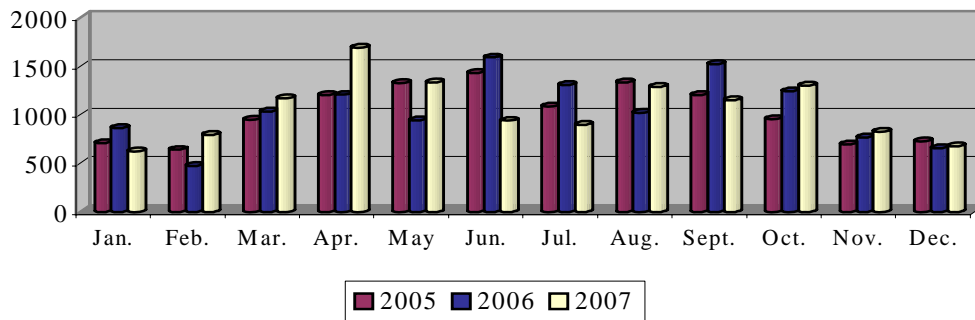


## Ad hoc flights – 3 ton

### Passengers

	Jan.	Feb.	Mar.	Apr.	May	Jun.	Jul.	Aug.	Sept.	Oct.	Nov.	Dec.	Total
<b>2005</b>	705	639	946	1,202	1,325	1,432	1,084	1,331	1,202	954	695	724	<b>12,239</b>
<b>2006</b>	863	471	1,034	1,205	943	1,589	1,305	1,019	1,521	1,243	764	655	<b>12,612</b>
<b>2007</b>	623	793	1,170	1,692	1,330	938	894	1,287	1,152	1,302	824	673	<b>12,678</b>

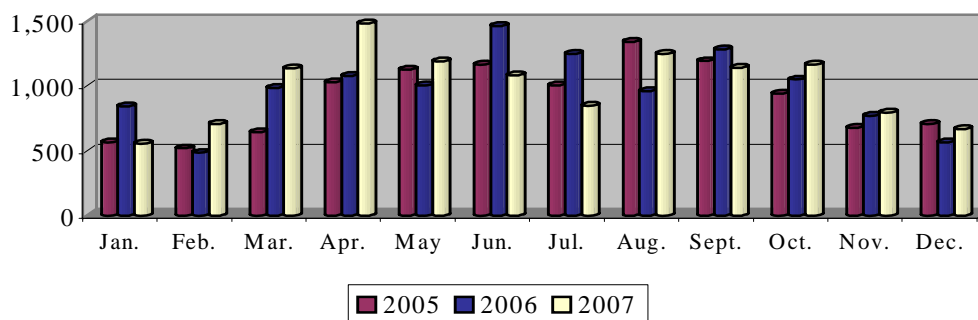
Passengers ad hoc flights - 3 ton



### Movements

	Jan.	Feb.	Mar.	Apr.	May	Jun.	Jul.	Aug.	Sept.	Oct.	Nov.	Dec.	Total
<b>2005</b>	566	518	644	1,028	1,128	1,166	1,002	1,340	1,192	942	676	704	<b>10,906</b>
<b>2006</b>	844	484	986	1,076	1,006	1,462	1,250	962	1,282	1,050	770	565	<b>11,737</b>
<b>2007</b>	554	704	1,136	1,484	1,190	1,082	846	1,246	1,141	1,166	796	665	<b>12,010</b>

Movements ad hoc flights - 3 ton

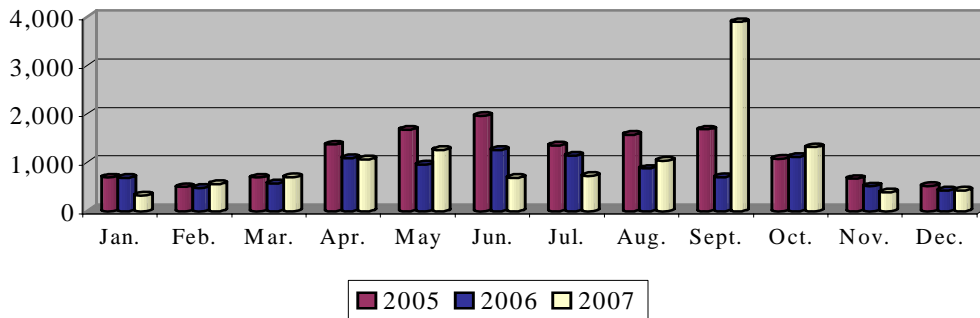


## Local flights

### Passengers

	Jan.	Feb.	Mar.	Apr.	May	Jun.	Jul.	Aug.	Sept.	Oct.	Nov.	Dec.	Total
<b>2005</b>	692	496	691	1,368	1,680	1,964	1,344	1,574	1,681	1,074	666	512	<b>13,742</b>
<b>2006</b>	688	478	568	1,088	958	1,256	1,142	874	700	1,116	510	420	<b>9,798</b>
<b>2007</b>	324	550	702	1,062	1,258	683	722	1,038	3,894 <sup>2</sup>	1,316	388	428	<b>12,365</b>

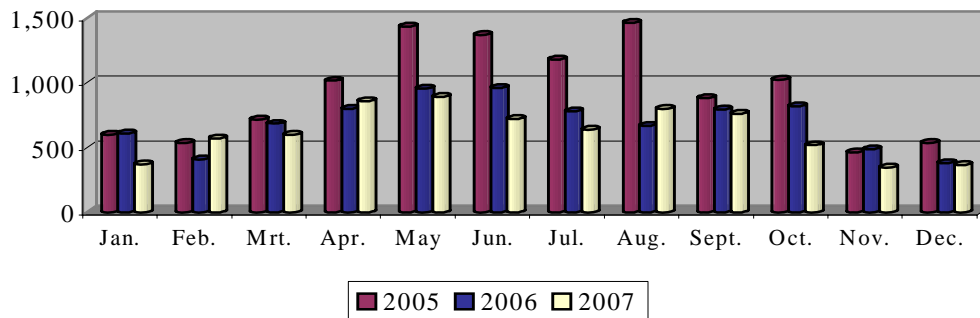
Passengers local flights



### Movements

	Jan.	Feb.	Mar.	Apr.	May	Jun.	Jul.	Aug.	Sept.	Oct.	Nov.	Dec.	Total
<b>2005</b>	600	536	716	1,016	1,434	1,370	1,178	1,464	880	1,024	462	536	<b>11,216</b>
<b>2006</b>	608	408	684	798	954	962	780	666	794	818	488	380	<b>8,340</b>
<b>2007</b>	370	568	600	856	890	720	638	798	758	518	344	366	<b>7,426</b>

Movements local flights



<sup>2</sup> On 18 September 2007 the 27<sup>th</sup> "Luchtvaartdag" took place whereby over 1,400 disabled children made their first flight. In total, about 40 flights were performed.

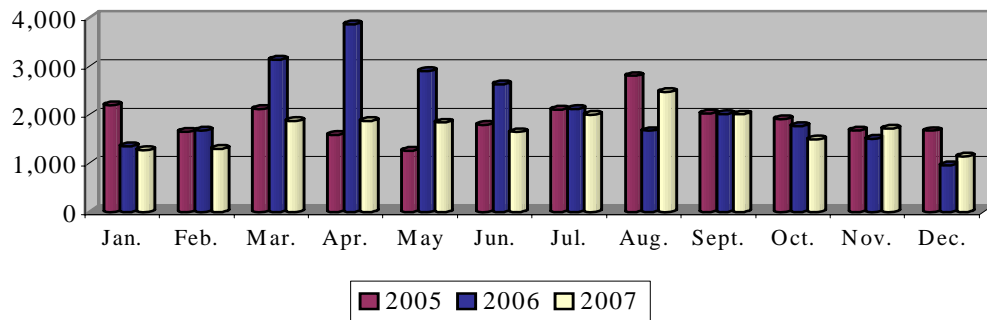


## Training flights

### Passengers

	Jan.	Feb.	Mar.	Apr.	May	Jun.	Jul.	Aug.	Sept.	Oct.	Nov.	Dec.	Total
<b>2005</b>	2,200	1,648	2,122	1,588	1,258	1,794	2,100	2,800	2,026	1,912	1,672	1,668	<b>22,788</b>
<b>2006</b>	1,350	1,673	3,128	3,864	2,898	2,628	2,112	1,668	2,016	1,760	1,500	962	<b>25,559</b>
<b>2007</b>	1,266	1,302	1,872	1,868	1,838	1,642	2,004	2,474	2,007	1,490	1,718	1,146	<b>20,627</b>

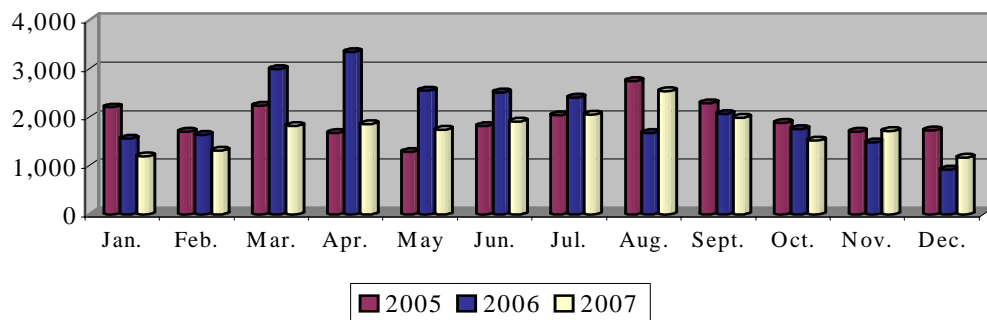
Passengers training flights



### Movements

	Jan.	Feb.	Mar.	Apr.	May	Jun.	Jul.	Aug.	Sept.	Oct.	Nov.	Dec.	Total
<b>2005</b>	2,202	1,700	2,230	1,672	1,282	1,814	2,041	2,740	2,292	1,888	1,704	1,724	<b>23,289</b>
<b>2006</b>	1,554	1,640	2,994	3,340	2,546	2,512	2,400	1,672	2,064	1,748	1,480	920	<b>24,870</b>
<b>2007</b>	1,196	1,314	1,818	1,860	1,736	1,914	2,053	2,538	1,986	1,516	1,712	1,170	<b>20,813</b>

Movements training flights



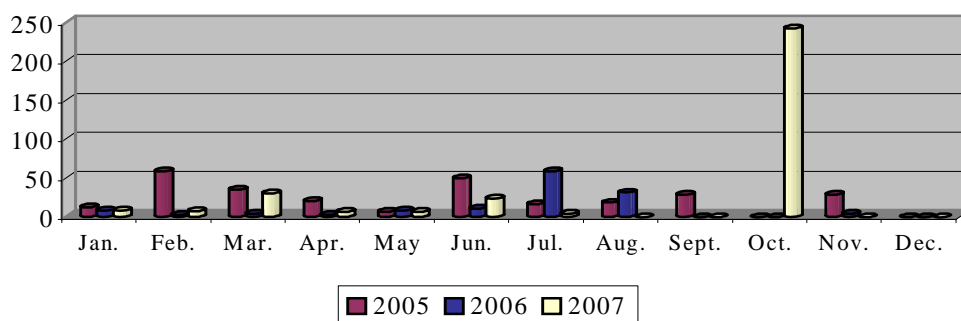
## Other flights

(= military flights, photo flights, diversions)

### Passengers

	Jan.	Feb.	Mar.	Apr.	May	Jun.	Jul.	Aug.	Sept.	Oct.	Nov.	Dec.	Total
<b>2005</b>	12	58	35	20	6	49	16	18	28	0	28	0	<b>270</b>
<b>2006</b>	8	2	4	2	8	10	58	31	0	0	4	0	<b>127</b>
<b>2007</b>	8	7	30	6	6	23	4	0	0	242 <sup>3</sup>	0	0	<b>326</b>

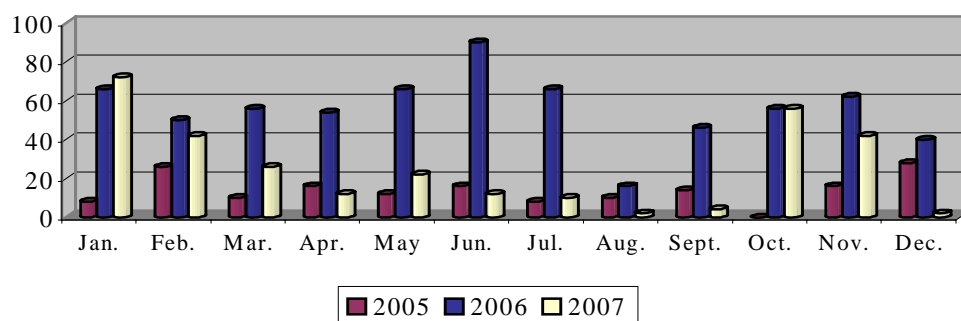
Passengers other flights



### Movements

	Jan.	Feb.	Mar.	Apr.	May	Jun.	Jul.	Aug.	Sept.	Oct.	Nov.	Dec.	Total
<b>2005</b>	8	26	10	16	12	16	8	10	14	0	16	28	<b>162</b>
<b>2006</b>	66	50	56	54	66	90	66	16	46	56	62	40	<b>668</b>
<b>2007</b>	72	42	26	12	22	12	10	2	4	56	42	2	<b>302</b>

Movements other flights



<sup>3</sup> On 8 October 2007 a 4-day army exercise started with the landing of 8 C-130's at Antwerp Airport. Troops and vehicles were disembarked for the remainder of the exercise in the Antwerp region.

# Glossary

## 1. SCHEDULED FLIGHTS

Regular commercial flights.

## 2. CHARTER FLIGHTSVLUCHTEN

Flights and accommodation, or flights only, reserved to the members of an association traveling group.

## 3. AD HOC-VLUCHTEN (-3 TON EN +3 TON)

Transfer by aircraft for business purposes, or a flight performed by an aircraft with a maximum seat capacity of 7 passengers, for which the planned destination includes one or more landings outside the airport of departure

## 4. LOCAL FLIGHTS

- 4.1. Transfer by aircraft for which the airport of departure is the planned destination, so that the flight includes no landings outside the airport of departure.
- 4.2. Maiden flights.

## 5. TRAINING FLIGHTS

- 5.1. Flight performed by a student-pilot to become a license.
- 5.2. Flight performed
  - for purpose of the issue, renewal or restitution of a certificate of airworthiness;
  - to control ground installations.
- 5.3. Flight performed by an aircraft for crew training.

## **6. OTHER FLIGHTS**

6.1. Diversions.

6.2. Delivery flight: flight to deliver an aircraft.

6.3. Empty flight to bring an aircraft in position.

6.4. Military flights.

6.5. Flights for exclusive transport of heads of state or members of government in the exercise of their duty.

Vlaamse overheid



**Composition**

Department Mobility and Public Works  
Antwerp Airport  
Katleen Pittevils

**Responsible publisher**

Ir. Fernand Desmyter  
Secretaris-generaal

**Printed by**

Agency for Facility Management  
Digitale Drukkerij

**Catalogue number**

D/2008/3241/004

**Edition** January 2008