

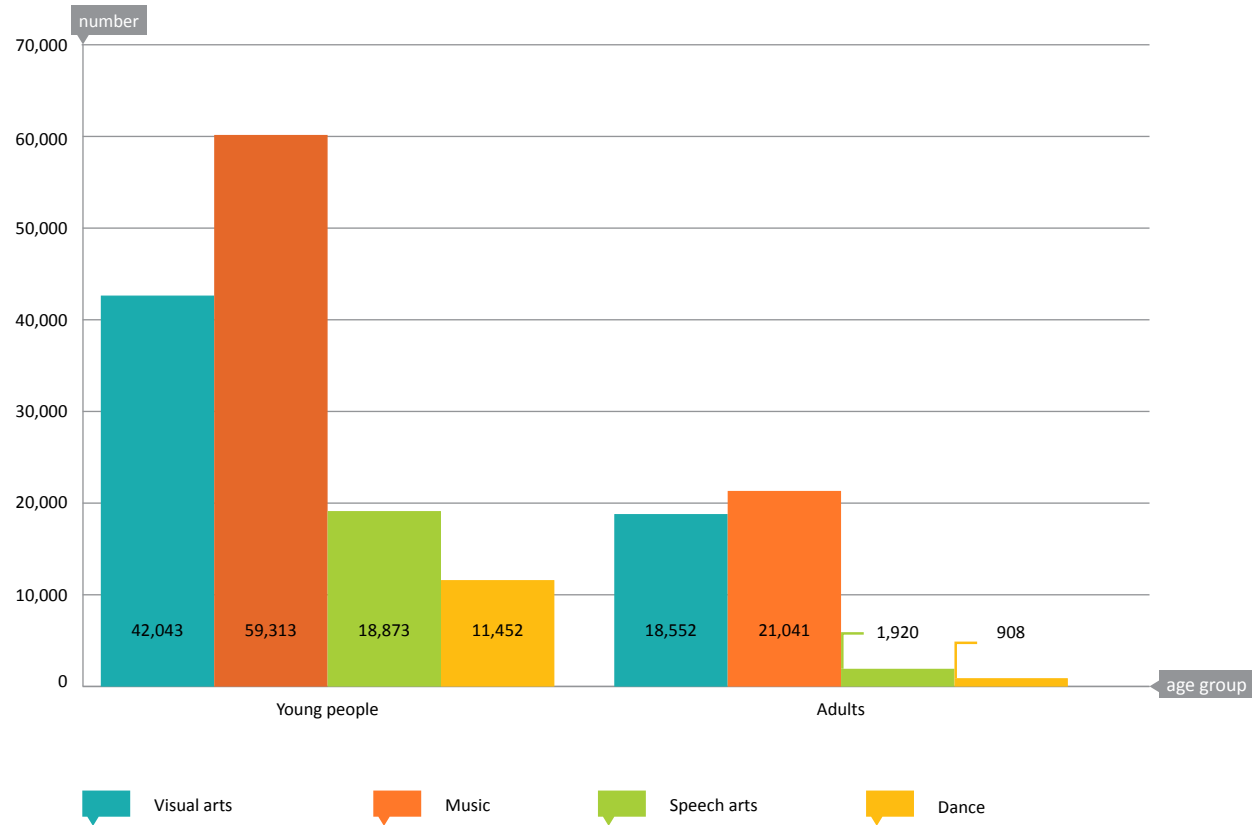
# 6 PART-TIME ARTS EDUCATION • School population

## 1 Number of course participants in part-time arts education by age category, subject and gender<sup>(1)</sup>

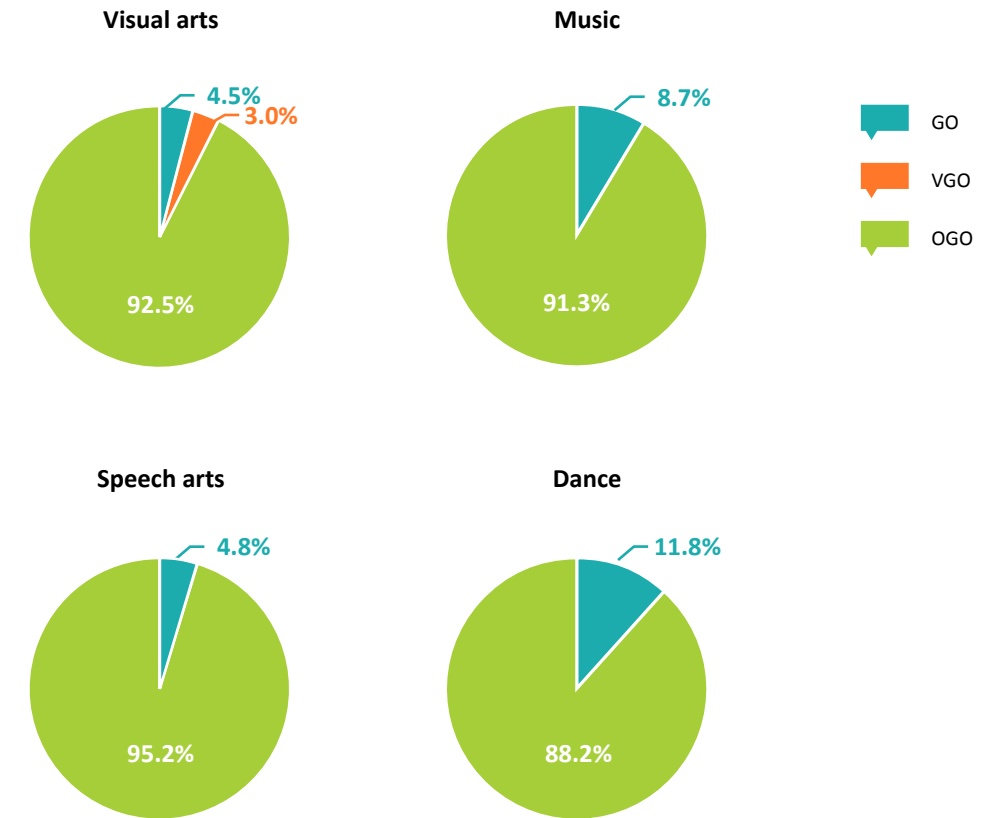
	Young people			Adults			Total		
	M	F	T	M	F	T	M	F	T
Visual arts	14,233	27,810	42,043	5,399	13,153	18,552	19,632	40,963	60,595
Music	24,163	35,150	59,313	8,803	12,238	21,041	32,966	47,388	80,354
Speech arts	5,236	13,637	18,873	505	1,415	1,920	5,741	15,052	20,793
Dance	295	11,157	11,452	30	878	908	325	12,035	12,360
<b>Total</b>	<b>43,927</b>	<b>87,754</b>	<b>131,681</b>	<b>14,737</b>	<b>27,684</b>	<b>42,421</b>	<b>58,664</b>	<b>115,438</b>	<b>174,102</b>

(1) The count is based on the number of students eligible for funding. Individuals enrolled on more than one course of study are counted more than once.

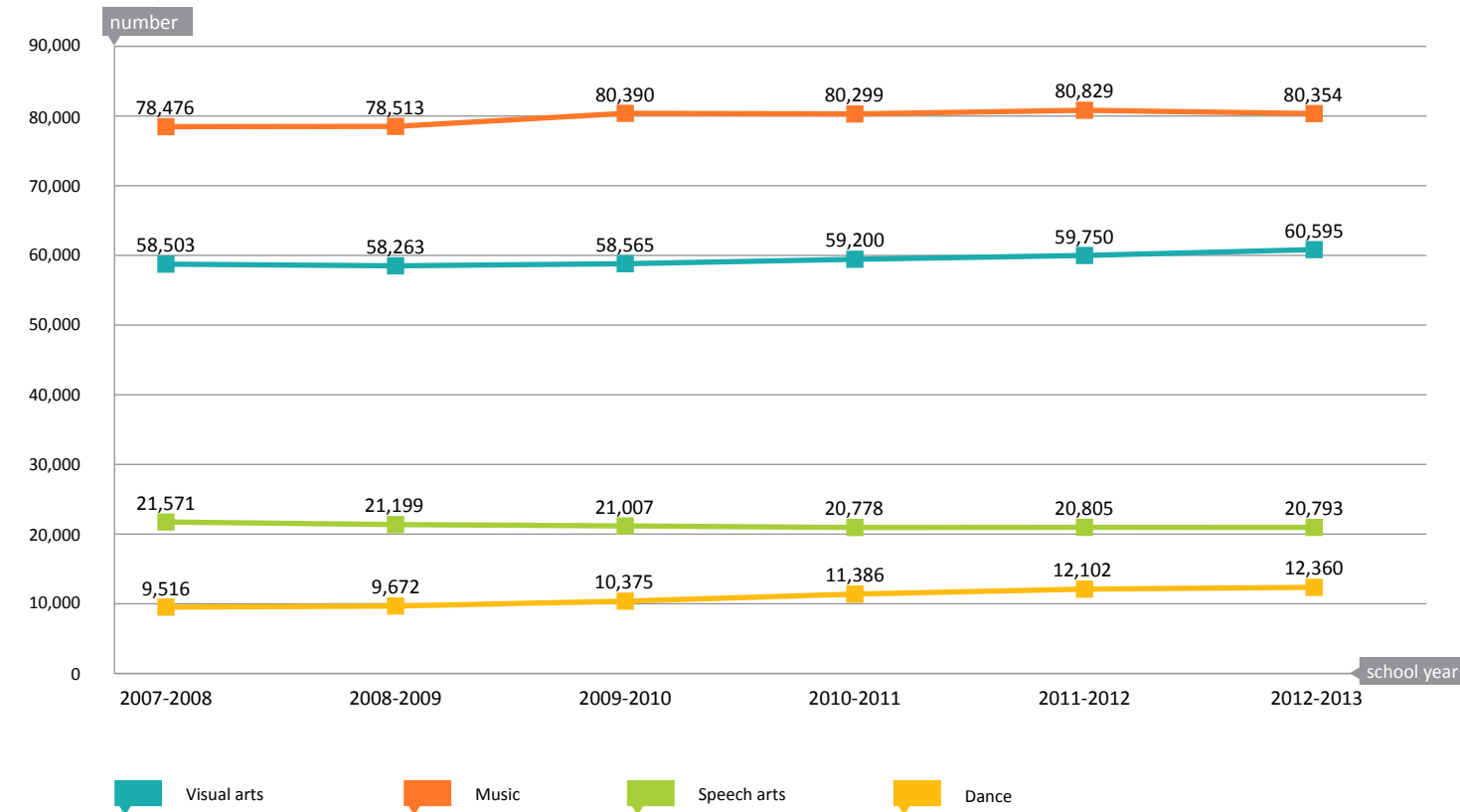
## 2 Proportion of young people/adults in part-time arts education



## 3 Course participants in part-time arts education by educational network



## 4 Changes in the number of course participants in part-time arts education by subject



**5 Number of course participants in part-time arts education by subject or by combination of subjects for which they enrolled <sup>(1)</sup>**

	Number of course participants	Percentage
<b>Subject or combination of subjects</b>		
Only music	73,713	64.9%
Only speech arts	15,318	13.5%
Only dance	9,874	8.7%
Music and speech arts	9,388	8.3%
Music and dance	3,410	3.0%
Speech arts and dance	1,078	0.9%
Music and speech arts and dance	726	0.6%
<b>Total</b>	<b>113,507</b>	<b>100.0%</b>

(1) The number of course participants is measured by the number of subjects for which they have enrolled. Individuals enrolled in more than one subject are counted more than once.

**1 Number of institutes in part-time arts education**

	GO	VGO	OGO	Total
Visual arts	5	4	56	65
Music, speech arts and dance	10	-	85	95
Art academies <sup>(1)</sup>	-	-	8	8
<b>Total</b>	<b>15</b>	<b>4</b>	<b>149</b>	<b>168</b>

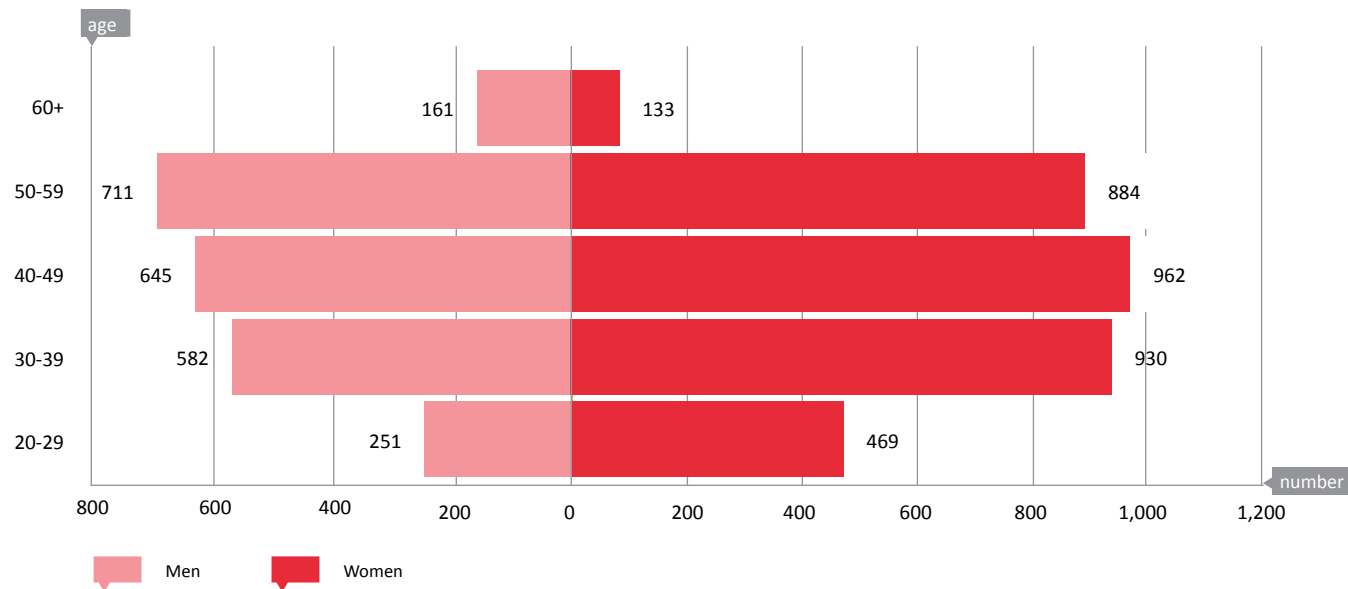
(1) Art academies offer visual arts as well as music, speech arts and dance.

# 6 PART-TIME ARTS EDUCATION • Staff

## 1 Staff in part-time arts education expressed in number of persons/number of full-time equivalents

	Men	Women	Total
Number of persons:	2,350	3,378	5,728
Number of full-time equivalents	1,836	2,423	4,259

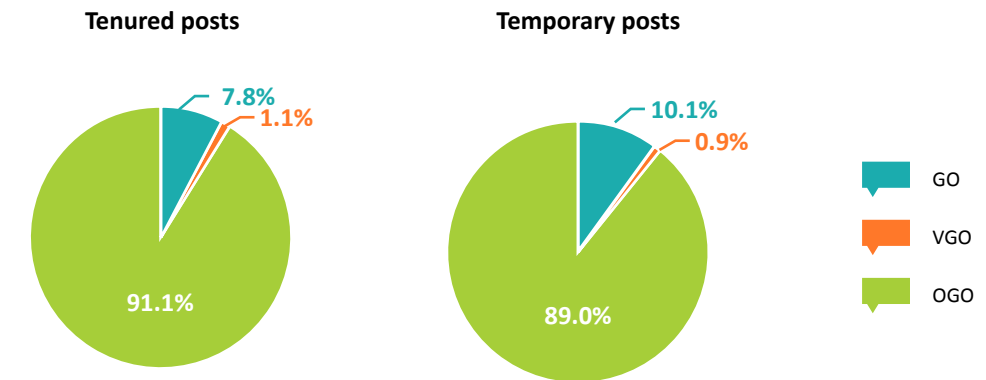
## 2 Staff in part-time arts education by age group and gender



## 3 Age structure of staff in part-time arts education by educational network and gender

	GO			VGO			OGO			Total		
	M	F	T	M	F	T	M	F	T	M	F	T
20-29	29	36	65	2	-	2	220	433	653	251	469	720
30-39	57	83	140	3	5	8	522	842	1,364	582	930	1,512
40-49	49	56	105	9	16	25	587	890	1,477	645	962	1,607
50-59	58	78	136	14	13	27	639	793	1,432	711	884	1,595
60+	20	16	36	5	1	6	136	116	252	161	133	294
<b>Total</b>	<b>213</b>	<b>269</b>	<b>482</b>	<b>33</b>	<b>35</b>	<b>68</b>	<b>2,104</b>	<b>3,074</b>	<b>5,178</b>	<b>2,350</b>	<b>3,378</b>	<b>5,728</b>
55+	50	57	107	12	2	14	453	427	880	515	486	1,001

## 4 Staff of part-time arts education by educational network and legal status (full-time equivalents)



## 5 Staff in part-time arts education by educational network, legal status and gender (full-time equivalents)

	Tenured posts			Temporary posts			Total		
	M	F	T	M	F	T	M	F	T
GO	118	138	256	41	59	100	159	197	356
VGO	18	19	37	5	4	9	23	23	46
OGO	1,304	1,675	2,979	350	528	878	1,654	2,203	3,857
<b>Total</b>	<b>1,440</b>	<b>1,832</b>	<b>3,272</b>	<b>396</b>	<b>591</b>	<b>987</b>	<b>1,836</b>	<b>2,423</b>	<b>4,259</b>

## 6 Staff in part-time arts education by legal status and age category

	20-29	30-39	40-49	50-59	60+	Total
Tenured posts	60	828	1,345	1,453	273	3,959
Temporary posts	660	684	262	142	21	1,769
<b>Total</b>	<b>720</b>	<b>1,512</b>	<b>1,607</b>	<b>1,595</b>	<b>294</b>	<b>5,728</b>

## 7 Changes in staff in part-time arts education by legal status

	2007-2008	2008-2009	2009-2010	2010-2011	2011-2012	2012-2013
Tenured posts	3,591	3,680	3,767	3,842	3,944	3,959
Temporary posts	1,879	1,850	1,846	1,838	1,764	1,769
<b>Total</b>	<b>5,470</b>	<b>5,530</b>	<b>5,613</b>	<b>5,680</b>	<b>5,708</b>	<b>5,728</b>

# 6 PART-TIME ARTS EDUCATION • Budget

## 1 Part-time arts education budget and share of part-time arts education in the overall education budget (in thousands of euros)

Part-time arts education budget	228,521
Share of part-time arts education budget in the overall education budget	2.15%

## 2 Changes in the part-time arts education budget by educational network (in thousands of euros)

	2008	2009	2010	2011	2012	2013
GO	15,045	17,085	17,917	18,856	19,449	20,024
VGO	2,653	2,777	2,149	2,631	2,738	2,805
OGO	170,370	178,998	184,436	195,022	201,319	205,434
Cross educational networks	307	315	252	258	592	258
<b>Total</b>	<b>188,375</b>	<b>199,175</b>	<b>204,754</b>	<b>216,767</b>	<b>224,098</b>	<b>228,521</b>

## 3 Changes in the cost per course participant in part-time arts education (in euros)

