

Flanders Naturally #4



Dear friends of Flanders,

No medicine can match the effect that nature has on body and soul. A walk in the nature offers more than 'just' a breath of fresh air. Nature has a unique impact on our physical and mental wellbeing.

Spending more time in the nature and moving more is the key to a happier life. Just five minutes in green space is enough to experience its positive effects: You feel happier, have a better self-image, a lower blood pressure, less stress That is why we do it, right?

And even better, do it together! Go on a date with your partner and admire the starry night sky, take your children into nature's playground, go hiking with friends and enjoy a cosy picnic.

So, what are you waiting for? Put on those hiking boots and get out there.

In this edition we will take you to Limburg, in the east of Flanders. There you can find Bosland, the largest adventure forest in Flanders. Here children are king. Climb the Giant of Bosland, relax in the Lommel Sahara or try to spot the Bosland Big Five! Or would you rather spend your time with your head among the treetops? Then Walking through the Trees must be on your list!

Another Flemish nature gem is the Voerstreek. Nestled between steep hills, colourful valleys, sunken lanes and forests you find six picturesque villages that make up the Voerstreek area. The only part of Flanders to the east of the Meuse, is completely surrounded by borders.

Discover 'Flanders Naturally'.

Bosland

Dreaming between the trees: nowhere can you do it in such a varied way as in the north of Limburg. Here Bosland rules, the largest adventure forest in Flanders. 6,517 hectares (16,000 acres) of prime nature. Where even the wolf feels at home. Bosland bundles together sixteen areas of nature. Each with its own character.

Wade through a desert or cycle along a canal. Conquer tall land dunes or marvel at sparkling blue lakes. Horseback rides through the heather or walking through grasslands. Hiking on expeditions with the kids or hiding in a play forest. Whatever decor you choose, the nature lends itself to your favourite activity. The many rare plants and animals welcome you!

Bosland districts

Lommel

One moment you are wading through the Sahara, a desert of sand with sparkling lakes. The next, you are diving into a subtropical swimming paradise or crossing areas of nature with coniferous forests and heathlands on foot, by bike or on horseback.

Pelt

A mysterious forest that immerses you in sounds. Historic traces of ferocious Buck Riders and a merciless landdross. A cycling route that takes you along the dreaded Wire of Death.

Accessibility

Bosland is located in the north of the province of Limburg and stretches across the municipalities of Hechtel-Eksel, Lommel, Peer and Pelt.

The municipality of Lommel has a train station with connections to Brussels, Ghent and Antwerp. Between the municipalities, the public transport De Lijn provides easy access and there are numerous cycling connections.

Hechtel-Eksel

This area is home to giant land dunes that dominate the surroundings as well as grand landscapes and areas of nature with unique fauna and flora and adventurous play forests. It is one of the greenest municipalities in Flanders.

Peer

The waving cornfields, endless fields and tingling brook valleys await. Riders saddle their horses, cyclists jump on the saddle and hikers put on their walking boots.

Gems of nature in Bosland

Anyone who hears the name Bosland immediately thinks of forests. This is not unjustified: a large part of the surface area of this unique area of nature consists of forest. The Pijnven is the beating, green heart of Bosland. But it is so much more than just trees. Heather, sand, dunes, babbling brooks, quiet valleys: Bosland offers a variety of landscapes that will delight young and old alike. It is no wonder so many (rare) animal species feel perfectly at home here.

Sand and dunes

Bosland is one of the few areas of nature where you can still find sand plains and open dunes. The high land dunes that define the landscape of In den Brand are silent witnesses to the fact that the sea found its way to Hechtel-Eksel thousands of years ago. The dunes themselves are as rare as the plants and animals you find here. Let yourself be enchanted by the rich variety of colours and shapes that the mosses and lichens offer here. But the sand plain of the Sahara in Lommel, despite its unnatural origins, is an important biotope for countless plants and animals such as the peculiar natterjack toad.

Brooks and valleys

There is no shortage of water in Bosland, which is home to brooks and valleys. That water means life is evidenced not only by the dozens of birds that populate the pools on the Sahara. You can also see it in the Dommel Valley with its carr thickets, hay meadows, pastures and reed beds. Another striking example is the Lommel water meadows (De Wateringen), which are home to no fewer than two hundred plant types, including many rare species. There are also two blue lifelines running through Bosland: the Beverlo canal and the Bocholt-Herentals canal.

Forests

The predominantly coniferous forests of Hechtel-Eksel, Pelt and Lommel were planted for the mining industry at the beginning of the 20th century. A good example is the immense Pijnven, which is being systematically transformed into a more mixed forest to give biodiversity even more opportunities. Here you can encounter birds of prey, deer, squirrels, wild boar and other forest dwellers.

Heathland and fens

With the massive afforestation for the mining industry, most of the wild heathland areas that characterised North Limburg disappeared. Nevertheless, some heathland relics from 'the silent Kempen' of yore remain intact. These heathlands and fens are mainly located on Lommel territory (Kattenbos, the Heuvelse Heide, Blekerheide and Riebossersheide) and on the (inaccessible) military domain of Hechtel-Eksel. Now they are being preserved because they are important for many species and are typical of our Flemish landscape.

Bosland Big Five & Magnificent Seven

The Big Five – the Big Five of Bosland

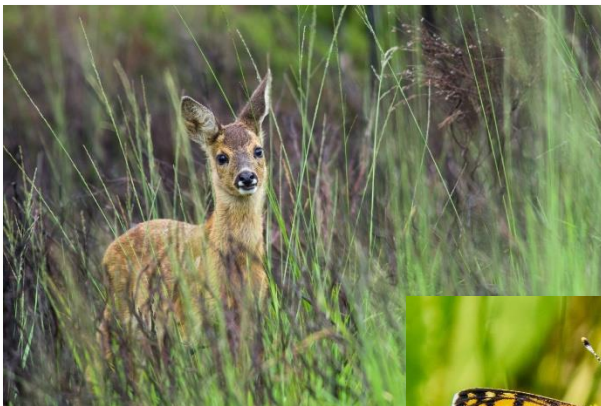
The lion, the leopard, the rhino, the elephant and the Cape buffalo: they go through life together as the African Big Five. Bosland also has its Big Five. The chance that you spot them all in one visit small. But never say never. So be sure to keep your binoculars close by.

- Wolf
- Fox
- Roe deer
- Wild boar
- Eagle owl



The Magnificent Seven

- Nightjar
- Ladybird spider
- Smooth snake
- Glanville fritillary
- Woodlark
- Spadefoot toad
- Kingfisher



© Bosland / Erwin Christis

Walking inspiration

The network of walks takes you to all corners of Bosland. You can map out your route yourself and go from numbered point to numbered point which is great if you like to decide the distance yourself. With more than 400 kilometres (248 miles) of nature trails, the variations are endless, plus 70% of the routes are on quiet dirt paths.

The Bosland Walking Network offers huge variety. Combine different walking areas in one longer trek or focus on one specific area. From sandy soils to blue lakes, from forests to brook valleys, every hike has new surprises to discover.

Sahara: the most beautiful hike in the country, miniature desert, lakes, heather and forests.

Starting point: De Soeverein

Distance: 3 km (1.86 miles) (children's walk), 6.5 km (4 miles) or 12.3 km (7.6 miles)

Pijnven: The ultimate forest experience, Cycling through the Trees, playful exploring.

Starting point: Kiefhoekstraat 16

Distance: 2.8 km (1.7 miles) (Forest inhabitants route) 6.8 km (4.2 miles) (Digital walk) or 10.6 km (6.5 miles)

Pelt Green Stop Walk: The Green Stop Walk connects the two green stations of Neerpelt and Hamont via a route that has intersections with the Bosland walking network. There are three variants. Along the way, unpaved and paved paths alternate: the route is therefore not suitable for wheelchair users.

Starting point: Neerpelt station

Destination: Hamont station

Distance: 2.8 km (1.7 miles) (Forest inhabitants route) 6.8 km (4.2 miles) (Digital walk) or 10.6 km (6.5 miles)

Hoksent - Molhem: The Hoksent-Molhem hiking area is a unique nature reserve in the valley of the Dommel, where you can enjoy an almost uninhabited piece of greenery where peace and quiet reign.

Starting points: depending on the distance - Klein-Brogel church, Hoksent chapel or Kringwinkel Esmeralda

Distances: between 3 and 12 km.(1.6-7.5 miles)

Accessibility: Out and about with a wheelchair, pushchair or stroller? Bosland has several atmospheric routes that are specially designed for 'four-wheel drive' walkers. Because everyone has the right to enjoy our beautiful nature.

© Bosland – Lieven Geuns

Exceptional natural phenomena

Every month, nature takes on a new appearance and the different species put their best paw or wing forward. Do you want to experience unique scenes from nature? Check out the timeline and discover which wonderful surprise is crossing your path right when you visit.

February: toad migration - in Resterheide and Hoksent - Molhem, the toads migrate en masse to the ponds. A feast for the eye.

April & September: osprey spotting - this bird passes through twice a year. Perhaps you can spot one in the Blauwe Kei or Resterheide?

June & July: cross the desert - no camels in the Sahara or In den Brand, but certainly a desert feeling. Especially in summer under a blazing hot sun!

August: a walk in the heather - The Heuvelse Heide and Kattenbos turn a striking pink, orange and purple in August.

July & August: wild flowers - the Reigerpad in Resterheide takes you to meadows full of wild flowers. A summer festival of colour.

September & October: Admire the bronze gold - the Hobos and Pijnven in the autumn? That is a painting palette of red-yellow-gold-brown-ochre. Unforgettable.

July & August: Butterfly spotting - in the summer months, Kattenbos and the Vlindervallei in the Pijnven teem with colourful flutterers. A phenomenon!

November: mushroom walks - Cross In den Brand with a guide and learn all about the wonderful world of mushrooms.

The Giant of Bosland

Wander through a desert-like landscape, past lakes and climb the 30-metre-high watchtower along the way. A unique construction made of wood and ropes. The view extends all the way to Eindhoven!



Out with the kids in Bosland



© Bosland

Welcome to the Biggest Nature Playground in Flanders. In Bosland, children can still be real children. Here they can get up to their best antics. They can explore in the forests, build camps, search for treasure.... Is the weather not so good? It does not matter. The subtropical swimming paradises and indoor play palaces welcome families with open arms.

Play forests and child-friendly walks

Bosland is the largest adventure forest in Flanders. Play forests provide hours of fun and enjoyment for the kids. Drag branches, build camp, roll off the dunes, play hide-and-seek or tag and cimb, slide, crawl... children's fun takes every form here.

Play equipment, mini golf, magical indoor play areas and wonderful water worlds

Enjoy a sunny terrace while the kids slide, swing and tumble. Or play a game of mini golf together. Don't worry if it rains, Bosland has plenty of experience rich indoor spaces and water worlds where children can be in charge.

Treasure hunts, quests, app tours and geocaching

The forests, heathland and dunes of Bosland are full of mysteries. Four challenging expeditions for tough treasure hunters. Can you unravel the secrets? If so, there's a nice surprise for you.

Modern treasure hunters? They won't be shying away from a challenge. Bosland is a true paradise for geocache fans. There is hidden treasure everywhere. Dig out your GPS coordinates and smartphone and dive into the many mysteries of Bosland on foot or by bike.



© Bosland - Monique Abrahams

Lommel Sahara

The Sahara of Lommel is a clear blue lake, surrounded by a mini-desert and deliciously scented coniferous and deciduous forests. This oasis of peace is a paradise for hikers, cyclists and nature lovers. Scented coniferous and deciduous forests. This oasis of peace is a paradise for hikers, cyclists and nature lovers.



Cycling

Cycling in Bosland? That's possible everywhere. Even if you don't have your bike with you. You can rent one easily from a Bosland Host or tourist office. Do you have an e-bike? Charge up on the way at one of the many charging stations. For example, at a cycle-friendly café. They also have cycle repair and first aid kits and many tips for tourists.

You can explore Bosland via the cycling route network. You cycle from numbered point to numbered point. It couldn't be easier. Take a look at your Limburg cycling map, note the intersection numbers for your route through Bosland and then simply follow your own notes.

Low-traffic and car-free cycle paths take you from one gem to another. Along the way, enjoy a local beer or a local delicacy at a Bosland Host, cross a picturesque centre, picnic at atmospheric stops and discover the hidden treasures. Never before has unwinding been so fulfilling and full of experiences.



© Bosland

Thematic cycling routes

In the wheel of nature: Woodland is so much more than just trees. Discover the diversity of the landscapes with these suggested routes. Neatly mapped out for you, from intersection point to intersection point.

From delicacy to delicacy: Your efforts must be rewarded, with local delicacies, for example. These cycling loops are not just there to get you moving on your bike. Your taste buds are also looking for stimulation.

The farmer: The countryside is doubly pleasant. The surrounding area here is really flat. Moreover, you are going to be fully immersed in fascinating farming life. Don't forget to greet the cows, pigs and horses along the way.

- Boerenloeren (12, 20 or 21 km) (7.4, 12.4, 13 miles)
- Hoeveveelde (23 km) (14.2 miles)
- Through the fields (40 km) (24.8 miles)

Iconic cycling routes: There are nine iconic cycle routes for a cycling holiday in Flanders. These routes connect some of the most picturesque Flemish landscapes with cycling trails and a specific theme. The iconic routes are all well-marked with signposts in both directions. You choose which direction you want to cycle in, and where you want to start or arrive. The Flanders Route and the Kempen Route both cross Bosland.



Walking and cycling through the trees

Cycling between the treetops, ten metres above the ground? In the Pijven, you pedal from a squirrel's perspective. You see, feel and smell Bosland as never before. Even after your third or fourth round, it continues to excite.

An unforgettable experience for the kids too. The incline is gentle and thus also a dream for less experienced cyclists.

Culture in Bosland

Why is Bosland so rich in culture? Simple. Its exceptional nature inspires the creative high points. From the scenes of Bruegel to artful sand carpets. From long distance travelling salesmen to glass artists. From imposing nature art to a singing forest. Step into this cultural realm and let yourself be surprised.

Bruegel Museum

Pieter Bruegel the Elder produced more than 40 masterpieces. The originals are to be found scattered across the whole world. Here you can admire all the full-size reproductions. A documentary explores the life of the Flemish master in more detail. Born in Peer, or what did you think?

Sound forest

Between the trees of Domain Dommelhof, there are some twenty sound installations by internationally renowned artists to discover. They teach you how to deal consciously with sound and ... silence. A stimulus for the ear, a delight for the eye. Unseen (and unheard) in Europe!

Glass House

The Glass House in Lommel is a modern glass pavilion that glows with creativity.

In this museum for contemporary glass art, there is a glass-blowing studio where glass artists, designers and students breathe life into their ideas every day. Admire, experience and blow.

You can come here for a workshop or a team building session, unique for Bosland and for Flanders.

Climbing in a glass cone

Want to tower high above the centre of Lommel? Then climb the cone of the Glass House. A landmark in the wide surrounding area. Especially at night when it turns into an atmospheric light beacon.



© Lieven Geuns

Nature Art



© Bosland

Will Beckers is somewhat of the 'house artist' in Bosland. You can find his works in Hechtel-Eksel, Pelt and Lommel.

Active & outdoors



Horse riding

Hundreds of miles of unpaved forest and sand paths, clearly signposted: Bosland is an equestrian paradise. You trot, gallop or simply ride from intersection to intersection. Ideal for putting together your own loop. Just a break or staying overnight? Both are possible at horse-friendly catering establishments that will also spoil your four-legged friend.

For water lovers

Sail on the Dommel between Pelt and Valkenswaard or opt for a canoe or kayak. Along the way, you pass two beautiful areas of nature.



Walk Bosland clean

Anyone who wants to help clean up litter while exploring nature can now borrow a 'CleanWalk walking stick', a combination of walking stick and skewer.

Borrow a hammock

There are countless beautiful spots in Bosland where you can unwind after a busy day. Want to listen to the wind rustling through the trees or enjoy the pleasant rays of the sun? You can do so anywhere in Bosland in a hammock!

Between 15 March and 15 October, those who are interested can go to some twenty lending points - including a large number of Bosland Hosts - to borrow a hammock for free. There is no rental fee: you only pay a deposit.



Ultrarunning

The nature, cleverly connected with sport, exercise, recreation and tourism, is something we are constantly striving for in Bosland.

There are a number of uniform signposted running trails in five areas of nature in Bosland: Colony, Sahara, Waaltjesbos, Kattenbos and Holven. Three of these five areas are also interconnected!

For daredevils

Whizz down the Peerse Alps. Snow Valley is the largest indoor ski slope in Europe.

Cycle to intersection 207, settle down at spotters corner at a picnic table, get out your binoculars and feel the thunder of the F16s skimming overhead.

Aeroclub in the military Camp of Beverlo. Watch the planes take off from a sunny terrace. In a group, you receive an explanation of the airport, discover the hangars, etc. You can even book a first flight or sightseeing trip.

Spend the night in nature

Bosland has its hosts. They, many of them entrepreneurs, have completed a thorough training course so that they can provide you with better information about Bosland. Whether it be an overnight stay, eating and drinking, buying local products or enjoying a fun activity: a Bosland Host is always the place to be.

A FEW IDEAS

- B&B Sneprooi
- B&B De paenhoeve
- B&B Dream On Wheels
- B&B De Watering
- Sogni D'oro
- Bed en Vrijheid
- B&B La Rose
- B&B Le Jardin
- Holiday home De Zwaluwhoeve
- Holiday home Pelterheggen
- Holiday home Piantho
- Center Parcs De Vossemereen
- Hotel Corbie Lommel Ring
- Old Stadthuys Hotel De Boskar
- Hotel De Floreffe
- Center Parcs Erperheide
- Camping farm De Ballasthoeve
- Huis Over Grenzen
- Camping De Lage Kempen



Taste the nature

A FEW IDEAS

The Korhaan Distillery: There is pure craftsmanship to be found at distillery Korhaan in Hechtel-Eksel. This distillery has been making all kinds of drinks and elixirs since 1833. In 2007, it developed the first FSC-certified regional product in Flanders. More recently, in collaboration with Bosland, Tree Gin and Bosland Gin were introduced using ingredients from the region. Thus, the taste of Bosland in a bottle! Visitors can visit the experience centre of the Korhaan distillery.

Beer in Bosland: in Bosland, quite a few hosts are busy brewing all kinds of goodies. Take Microbrewery Mølder & Coöp from Pelt, for example, where they brew beer such as Hobos in a traditional way with lots of love and passion for the craft. You can also go there for tastings and workshops. It is the same story in Hechtel-Eksel at Brewery De Logt, where you will find craft beer brewed with its own unique recipe. Then there is also Naya beer and do not forget Brewery Amai and Brewery Vandijck from Lommel when it comes to regional beers. The often-awarded Loemelaer is a well-known member of the assortment and Slijkvisser recently received a gold medal in a European beer competition. And Peer is not lagging behind. Elite Tripel and De Geiteling are respectively a tasty Peers beer and a well-known Peers home brewery.

't Ezelbrugske: Host 't Ezelsbrugske from Pelt produces ice cream in the traditional way.

Bakkerij Swinnen: this bakery produces all kinds of delicious baked goods, from hand to plate. Its assortment includes the immensely popular Bosland cookies for the little ones, as well as Sahara cake. Visitors can book a group visit there.

Chocolatier Koen Ulenaers: this chocolatier provides traditional pastries and bread. But even more famous are his chocolate products, including the Bosland pralines and the Lommel city pralines in the form of the Glass House. Go to him for a chocolate tasting, a workshop or for a team building session!

Delicious **picnics:** available via INGEbakken, B&B 't Pleintje and 't Picolootje

Asparagus Nursery Bries

't Slegershof: jam, juices, honey, homegrown fruit and vegetables.

Sahara Kempische Mosterd

Vanille & Co & het Winnerhof: fresh farm milk & traditional ice cream.



Voerstreek

Nestled between steep hills, colourful valleys, sunken lanes and forests you will find six picturesque villages that together make up the Voerstreek. The only part of Flanders to the east of the Meuse which is completely surrounded by borders.

The landscape of the Voer region is pure and particularly diverse; with gems of nature reserves, meandering streams and a rich variety of (rare) plants and animals. The unspoilt nature combined with the differences in altitude provide numerous, breathtaking views. The altitude varies from 49 metres by the Meuse in Moingen to 287.5 metres above sea level in the east. This makes the Reesberg in Remersdaal and Stroevenbos in Sint-Pieters-Voeren the highest peaks in Flanders.

With charming villages, nostalgic half-timbered houses, stately castles and other historical highlights along the way, this is a wonderful setting for a walk or bike ride. You can rest in one of the many accommodations in the region. Before you go home, don't forget to taste the many local delicacies that the Voerstreek has to offer.

Accessibility

The rural character of the Voerstreek is in stark contrast to the surrounding urban area. As a visitor to the region, this offers many advantages; for example, in no time, you are in the centre of a large historical city such as Maastricht, Aachen or Liège.

Vast areas of nature such as the Ardennes and the High Fens are just a stone's throw away. Smaller, lesser-known gems are also perfectly accessible by bike from the Voerstreek.

By car

> Via Brussels (E40), Tournai (E42) and Antwerp (E313) towards Liège. After the exit Hognoul keep left, towards Maastricht-Aken-Verviers (E25). In Herstal turn towards Maastricht (E25). After the Maastricht exit, keep to the left. Turn off at Eijsden/Sint-Geertruid and then turn right. Go 1.3 km and then go left. Follow the road for approximately 3 km ('s-Gravenvoeren').

> From the Netherlands: Via Maastricht towards Liège (E25), exit Eijsden (NL). For a number of km, drive straight on, through Eijsden. After the border crossing, turn left to 's-Gravenvoeren (3 km). Or via Maastricht and Margraten to Verviers, border crossing in Sint-Martens-Voeren (De Plank).

By train

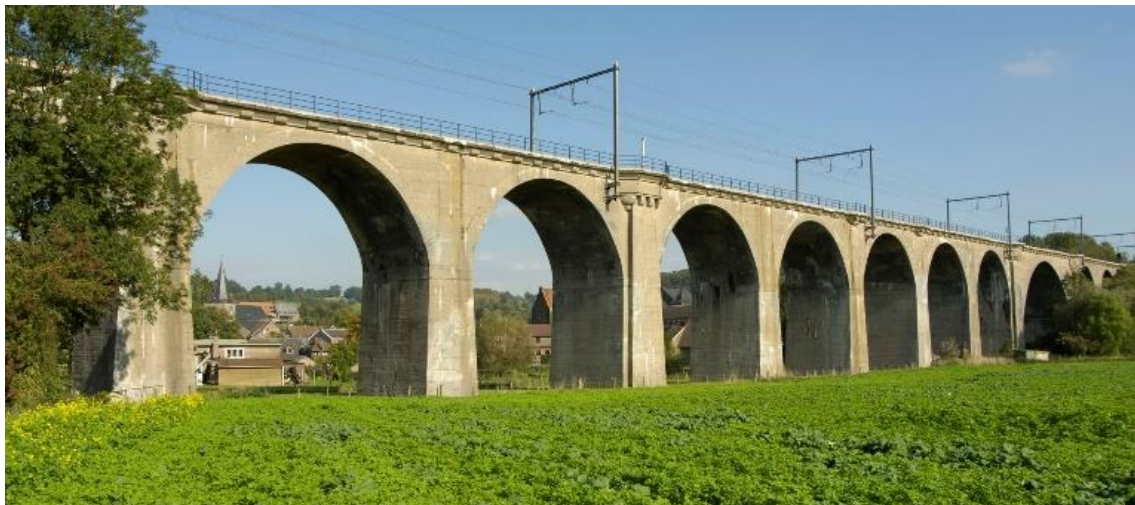
An IC or IR train runs every hour: from Ostend, Blankenberge, Ghent, Antwerp and Brussels to Liège-Guillemins.

In Liège: Take the L-train to Maastricht and get off in Wezet (Visé). From there you can easily continue by taxi.

By bus

Line 39B: Tongeren - Visé - Remersdaal

Every hour on working days and every two hours at weekends.



©Toerisme Voerstreek

Villages of the Voer

Remersdaal

The landscape here, with the farmhouses spaced far apart, looks very much like the Pays de Herve. Next to the church is the farmhouse of castle Het Hoes. Just outside the centre, the well-preserved castle of Obsinnich, you will find a holiday home for youth groups. Here the landscape climbs to 287.50 metres above sea level, making it the highest point in Flanders.

Sint-Martens-Voeren

The imposing railway bridge dominates the view of the village. The rivers Voer & Veurs converge here. In the hamlet of Veurs, facades of flint and beautifully restored half-timbered houses adorn the streetscape.

Sint-Pieters-Voeren

The smallest village is known for its 17th century Commandery of the former Teutonic Order. The source of the River Voer and a fish farm are located in the Park. A little further down you come across an artisanal syrup distillery. From the picturesque castle Magis, you have beautiful panoramas including views of one of the Voeren vineyards.

Moelingen

Idyllic village, traversed by the River Berwijn. Once the castle of Elven stood here. The remains can still be visited today. Most of the houses date back to after 1918 because the Germans burned most of the village down. Tall orchards make for beautiful blossom walks here in the spring.

Teuven

Located in a beautiful rolling landscape and surrounded by vast forests. Teuven has 2 castles: Castle De Hoof, formerly the home of the local gentry and now a place where you can stay. Down in the valley is the castle of Sinnich, the former abbey of the Canonesses.

's Gravenvoeren

The ribbon village snakes along the river Voer, which is why many houses have a footbridge. The visitors centre, opposite the church, is the ideal starting point for exploring the region.

Nature gems in the Voerstreek

The unique and varied landscape of the Voerstreek provides for an enormous variety of species. In the ponds and rivers live the brook lamprey, bullhead and common rudd. You can also find water shrews, beavers, dragonflies, salamanders, frogs and common midwife toads. Salmon use the Berwijn here to migrate to their spawning grounds.

The hazel dormouse and the wild cat are just two of the creatures that have one of their largest habitats here. The most unusual resident spotted here is the lynx, but perhaps the most famous is the European badger. You will find the largest badger population in Flanders here. Along the way, you will see many badger setts, often well hidden in the sunken lanes.

The Voerstreek is also the habitat of the Mergelland sheep. This old breed of sheep had almost disappeared, but it now (once again) ensures that the grasslands remain open and kept down. This local breed requires little care and is very agile. You can recognise them by the typical long tail.

Not only the fauna but also the flora exhibit a number of distinct traits. Many plants, such as the golden primula and a number of wild orchids, are rare or not seen at all in the rest of Flanders. This unspoilt landscape still accommodates a number of beautiful areas of nature, each with their own specific decor.



© Brecht Engelen

Walking inspiration

Walking via numbered intersections

Just like other large parts of Flanders, the footpaths here are linked to one large (cross-border) network and are signposted with intersection numbers. They are fun, varied and safe paths, usually unpaved and which take into account other recreation flows. For instance, where possible, walkers are separated from cyclists and the paths are largely car-free. The network offers a total of 125 km (77 miles) of pure walking pleasure. With the walking map, you mark out the most enjoyable routes and decide for yourself the distance, level of difficulty, etc. If you want to shorten or extend your route along the way? With knowledge of the intersection points at hand, neither is a problem.

Inspiring spots by the water

Several rivers babble through the decor here. The best known is the **Voer**, which has given its name to the region and to three villages. The source of this racy water is located in the park of the commandery in Sint-Pieters-Voeren.

Other nice spots where you can unwind by the water are the Wad in Teuven, the River Berwijn and the frog pond in Veurs.

Bronnenwandeling: In 2012, the [Bronnenwandeling](#) in the Voerstreek was chosen as the Most Beautiful Hiking Route of Flanders Holiday Region. The route lies in a beautiful part of remote Flanders. It takes you past the typical half-timbered houses and a beautiful grafted landscape. Also discover the badger setts.

Footpath Moeder de Gans

A 1.5 km (0.9 mile) walk alongside our organic vegetable garden (permaculture) for our own kitchen, the source of Moeder de Gans, a pond with frogs, a peephole with a view of the primeval forest, fruit orchard, vending machine with butter and cheese.

Out and about with a guide

Need someone who knows the region who will personally guide your group through it? That is possible as the guides offer customised walks. Choose a nature walk or a specific theme. Reservations can be made via Toerisme Voerstreek, at least three weeks in advance.

©Toerisme Voerstreek

Cycling

Cycle from the deepest valley to the highest point in Flanders. It's a true test, but the rewards are great: stunning panoramas and wonderfully long descents! Is climbing not your thing? Then let yourself get carried along the waters of the Meuse.

Limitless cycling

Cycling is the best way to discover the diversity of the landscape, with all its hidden nooks and crannies. The signposted routes of the Voerstreek connect seamlessly with other networks. Altogether, it makes for an exceptional cycling route network through the Meuse-Rhine Euro region. Discover a diversity of languages, cultures and landscapes. Will you opt for a winding route with many ups and downs, a flat route or a combination? A route along the villages of the Voer or across the borders?

Adventurous cycling

Did you know that the top 6 of the toughest climbs in Limburg are all to be found in the Voerstreek! The hilly landscape is perfect for an adventurous bike ride.

Mountain bikers can literally and figuratively push themselves to their limits here. The black route (25 km) (15.5 miles) is suitable for the more experienced mountain biker, with plenty of tough climbs. The blue route (26 km) (16 miles) is less heavy, but certainly no less adventurous. From the Voerstreek, you can also easily connect to routes in the surrounding area.

Bike and pedestrian ferry in Eijsden

That's how to get across the Meuse and the border in no time. From Eijsden (NL) to the Belgian village of Lanaye, or vice versa. The ferry operates from 10 a.m. to 8 p.m. (May-September) and from 10 a.m. to 6 p.m. (April and October).

Cycling nodes

Just like the walking intersection points, there are also cycling intersection points. You can use them to compose a nice route in advance, choose the distance and determine the degree of difficulty.

Bike hire

Rijwielverhuur Pinckers
E-bikes to go



Experiences

The Voerstreek is one large monument park with more than 120 listed buildings: churches, castles, crosses and chapels, authentic half-timbered houses, village scenes, nostalgic villages ... This historical heritage, embedded in a perfectly preserved landscape, is what makes the region so photogenic.

Immovable heritage

The region has six magnificent castle domains, with the former commandery of the German Teutonic Order in Sint-Pieters-Voeren as the crown jewel.

In the hamlet of Veurs in Sint-Martens-Voeren, you can still find many beautifully renovated half-timbered houses. They are inhabited and therefore also characterised as 'living Bokrijk'. It's definitely somewhere to take a stroll or ride your bike. Furthermore, the area appears to be littered with crosses and chapels. Some are real gems, such as the steenboskapel in 's-Gravenvoeren.

Touring through the past

Since prehistoric times, the part of Europe to which the Voerstreek belongs has been a place that has attracted people. The subsoil, the landscape, the presence of plenty of water and its location in the vicinity of the Meuse and Rhine have always been a draw. The Romans had one, possibly two, large villas here. Frankish and Carolingian royalty maintained a royal farmstead.

Fish ponds of the 'Berg'

The fish ponds are located 1 km (0.6 miles) from the commandery and are made up of six fish ponds with river trout, brook trout and rainbow trout which are replenished by a spring with a water rate of 1500 litres per minute.



©Toerisme Voerstreek

Voerstreek for children

A lovely walk with family, friends or your partner. Nothing like enjoying the nature and the healthy outdoor air together while the children run around and play. And that is certainly possible in one of the play forests you can find here. Extensive scrambling and climbing, that is what you do in the Voerenberg play forest: with a nest of branches, scrambling course, tree house, giant bird cage and more. Treasure hunting is possible in play forest Schoppemerheide: a discovery paradise under beech trees with a special entrance gate, old thick trees, branches ... Play forest games and run around in the peaceful, young play forest Alserbos. A fantastic place in which to hide or look for (natural) treasures as an adventurer is play forest Kys: a mysterious forest with old beech and pine trees and prickly bushes. Ideal for building your own camp.



Spend the night in nature

A FEW IDEAS

- De Kommel
- Hotel Blanckthys
- Landgoed Altenbroek
- Hostellerie Hof de Draeck
- 't Gulpdal
- Guest rooms:
 - › Onder de Poort
 - › Het Notarishuis
 - › Hoeve de Witte Gans
 - › Pure Teuven
- Holiday homes:
 - › Aan de Voer
 - › 't Maelhof
 - › Grijzegraaf
 - › De Snauwenberg
 - › Schophemmerhoeve
 - › Hoeve Mostert
- Group accommodation:
 - › Campsite De Drink
 - › Castel Notre Dame
 - › Green Valley

Taste the nature

A FEW IDEAS

- Liqueurs from the Voerstreek: Toerisme Voerstreek has developed a number of drinks using sloe as the basis. This liqueur is produced according to an old recipe. The result is a soft, deep-red drink with an intense flavour and delicious aromas.
- The Voerdrupke: The 'Voerdrupke mit sjlieëkreke' is a fruity aperitif gin. The drink is distilled with the extract from sloe plums. An excellent pick-me-up that you should definitely not miss as it is only available in the Voerstreek.
- Woodruff pastilles: The woodruff plant grows on wooded slopes in chalk-rich soil in shaded places. The plant is virtually odourless, but develops an attractive smell during drying. Woodruff pastilles are made by hand, in accordance with a time-honoured traditional recipe.
- Voeren cheese:
 - Goat's cheese: Fresh goat's cheese made from raw milk, straight from the farm. There is a wide choice of flavours
 - Herfse cheese: Herfse cheese is mainly known for its strong smell, which is why it is also known as "stink cheese". There are three types: mild, spicy (salted) and creamy.
- Voeren trout: The small rivers are excellent for trout fishing (permit required). Tens of thousands of trout are bred each year in the ponds of fish hatchery Commandery 7. You can taste them locally or take them home with you.
- Voeren beers: Rick's beer and Rick's dark are flavoured with artisanal distilled syrup. Loë beer comes from the fish hatchery Commandery 7 and is a good accompaniment for their trout dishes. Working together with brewery Grain 'Orge, a flavourful product was developed.
- The Voerstreek is also known as a fruit region from where a large number of local fruit varieties originate. Scattered throughout the Voerstreek, you can find vending machines with local products.
- Cider and (sparkling) wines: The rolling, sunny southern slopes and chalky subsoil of the Voerstreek lend themselves perfectly to viticulture.
- Artisanal ice cream from
- Stroopstokerij Wiertz-Robijns
- Wijndomein Zwaeneberg
- Pietershof Wijndomein
- Wijndomein Crutzberg
- Pomoenologisch onderzoekscentrum Kelders I genne Pley
- Brasserie - Viskwekerij Commanderie 7
- Hoeve de Bies
- 't Bakhuis
- Restaurant Café-Modern



@Toerisme Voerstreek



Flanders
State of the Art

RESPONSIBLE PUBLISHER

Peter De Wilde, VISITFLANDERS,
Grasmarkt 61, 1000 Brussels, Belgium

LEGAL DEPOT

D/2023/5635/16

All rights reserved. Except for those exceptions expressly provided for by law, no part of this publication may be reproduced, stored in an automated data file or made public in any way whatsoever without the prior written permission of the publisher.

For more information:

VISITFLANDERS

Grasmarkt 61, 1000 Brussels

Tel. 02 504 03 00

Fax 02 504 03 77

nature@visitflanders.com

www.visitflanders.com